

ON SITE SIGN TABLE  
SIGN  
DESIGNATION

1	30.5"X13"	"WELCOME BACK"	58"	SS-1 ON DT-6
2	30.5"X13"	"SEE YOU SOON"	58"	SS-1 ON DT-6
3	30.5"X13"	"DRIVE THRU"	58"	SS-1 ON DT-6
4	24"X24"	"DO NOT ENTER"	114"	ON DT-2
5	24"X24"	"STOP"	114"	ON DT-2
6	96"X24"	"CHESTNUT MART	218"	ON DT-5
7	102"X30"	"DUNKIN DONUTS"	126"	ON DT-5
7	48"X12"	& "DRIVE THRU"	82"	ON DT-5
8	30"X48"	"DUNKIN DONUTS"	254"	ON DT-5
9	72" DIA.	PEGASUS	117"	ON DT-5
10	SEE DETAIL	SEE DETAIL	246"	ON DT-6
11	100"X36"	"MOBIL "	VARIES	ON DT-6

- NOTES:
1. BASE MAPPING SHOWN IS FROM SURVEYS BY DANIEL P. YANOSH, NYSLS FROM 2003 AND ENGINEERING + SURVEYING PROPERTIES FOR THE 2015 HIGHWAY RIGHT OF WAY AND TOPOGRAPHIC SURVEY.
  2. REFER TO DRAWINGS BY CIRIO TERRANTE ARCHITECT, P.C. FOR BUILDING LAYOUTS AND WASTEWATER DISPOSAL AND WATER SUPPLY PLANS.
  3. REFER TO HIGHWAY REALIGNMENT PLANS BY JMC SITE DEVELOPMENT CONSULTANTS.
  4. ROCK CUTS AND CATCH DETAILS WERE DEVELOPED FROM A GEOTECHNICAL ANALYSIS PERFORMED BY RAYMOND P. JENEIRO, P.E. OF GEODESIGN INC. P.C.

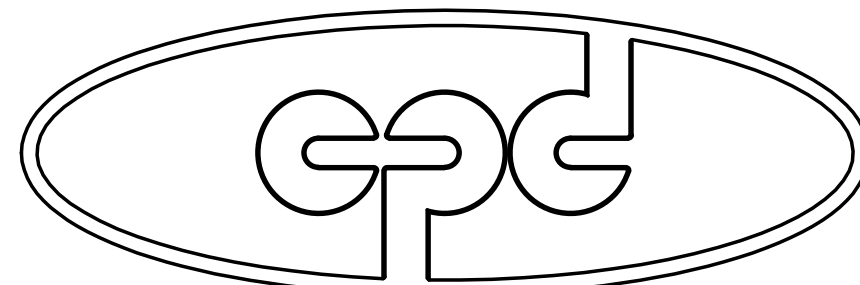
NOTE:  
BEFORE ANY DIGGING ON THE SITE TAKES PLACE, THE CONTRACTOR MUST FIRST CALL THE UNDERGROUND FACILITIES PROTECTION ORGANIZATION (UFPPO) AT 1-800-962-7962 TO IDENTIFY AND LOCATE ALL UNDERGROUND FACILITIES.

SITE SIGNAGE PLAN

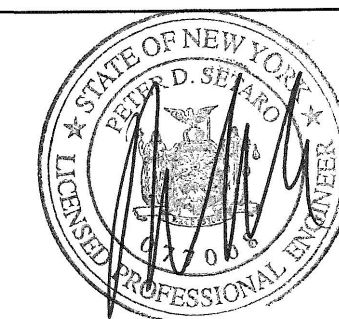
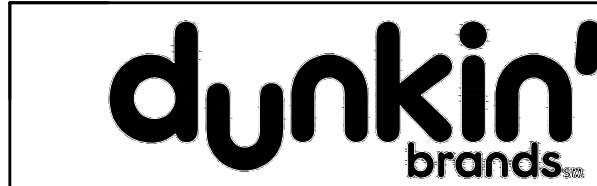
SCALE: 1"= 20'

LEGEND

- PROPOSED ADA ACCESSIBLE PARKING  
PROPOSED SINGLE POLE SIGN  
PROPOSED BOLLARD  
PROPOSED CONCRETE



CPD ENERGY CORP.



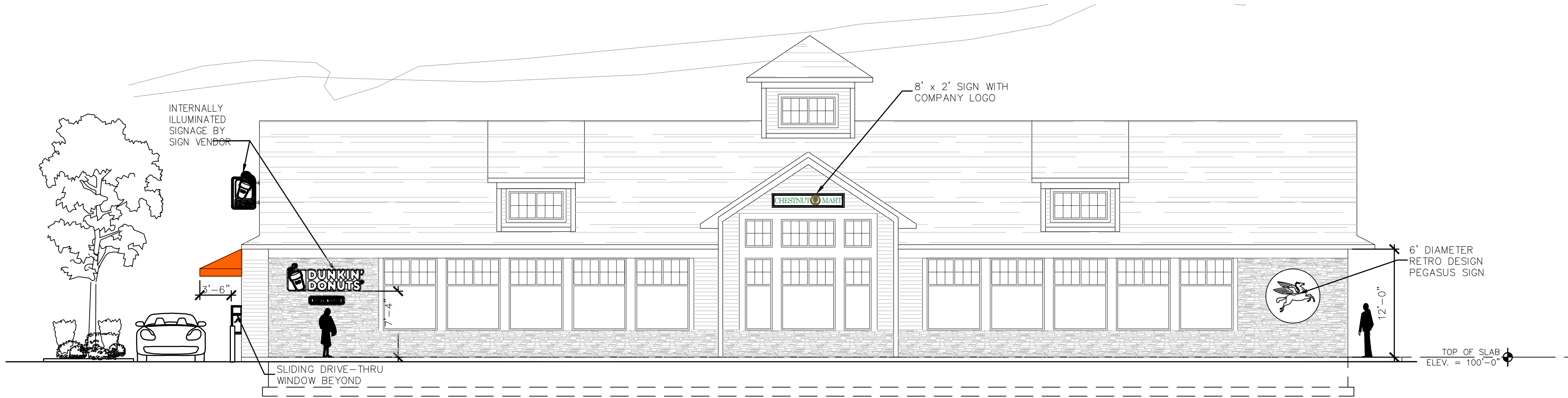
REV. No. DESCRIPTION DATE BY  
**CHESTNUT MART OF MARLBOROUGH**  
**CHESTNUT PETROLEUM DISTRIBUTORS, INC.**  
TOWN OF MARLBOROUGH ULSTER COUNTY, NY

SITE SIGNAGE PLAN

**MORRIS ASSOCIATES, INC.**  
ENGINEERING & SURVEYING CONSULTANTS, PLLC  
9 Elys Lane, Poughkeepsie, New York 12601  
Phone No. (845) 454-3411 Fax No. (845) 473-1962  
64 Green Street - Suite 1, Hudson, New York 12534  
Phone No. (518) 528-2300 Fax No. (518) 528-3963

DATE 02/01/17 SCALE 1"=20' DESIGNED BY THH DRAWN BY THH CHECKED BY PDS FILE No. 215016 DRAWING No. 1 of 3

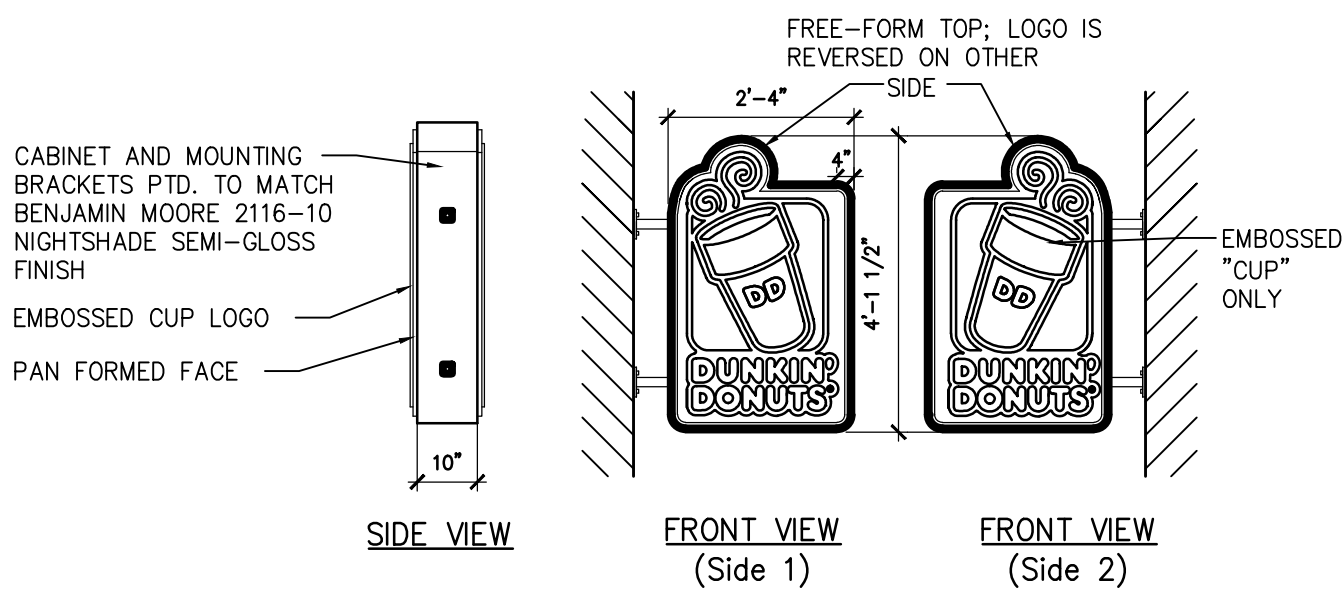
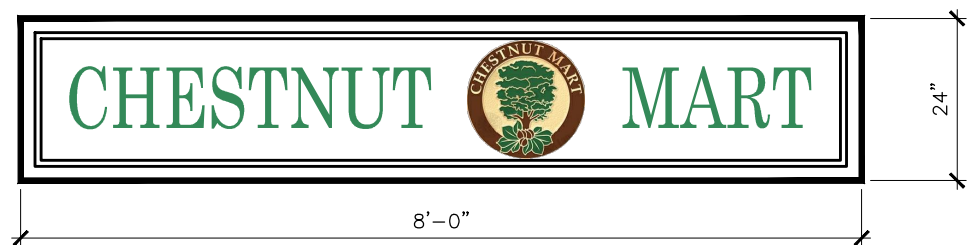




### BUILDING FRONT ELEVATION

N.T.S.

(INCLUDED FOR BUILDING MOUNTED SIGN LOCATIONS ONLY. SEE ARCHITECT'S PLANS FOR BUILDING DESIGN.)

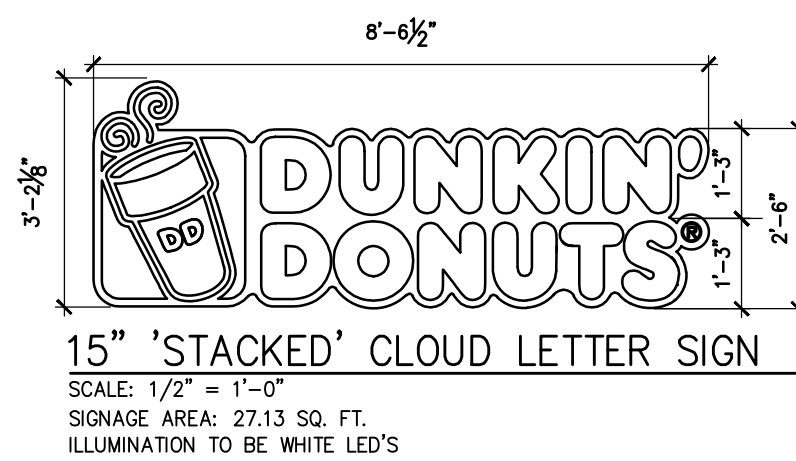


### 4' x 2.5' STACKED LOGO BLADE SIGN w/ CONTOUR TOP

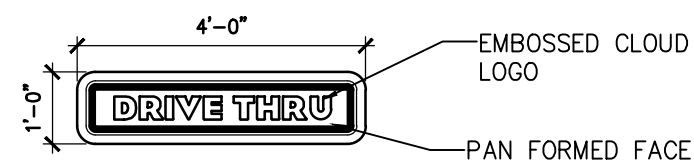
SCALE: 1/2" = 1'-0"

SIGNAGE AREA: 9.65 SQ. FT.

**COLOR & MATERIAL NOTES:**  
Faces to be pan formed and embossed "cup" logo; clear Solar Grade polycarbonate.  
**COLORS:**  
Background vinyl to be white.  
Vinyl colors to be:  
DD Orange- 3M #3630-3123  
DD Magenta- 3M #3630-1379  
Dark Brown (on cup logo)-3M #3630-59  
All vinyl to be applied to the second surface.  
Cans and mounting brackets to be ptd. to match Benjamin Moore 2116-10 Nightshade semi-gloss finish  
Illumination to be HQ/CW fluorescent lamps



**COLOR & MATERIAL NOTES:**  
**STACKED CLOUD SIGN:**  
Face to be formed clear polycarbonate, decorated second surface vinyl  
Vinyl colors to be:  
DD Orange- 3M #3630-3123  
DD Magenta- 3M #3630-1379  
Dark Brown (on cup logo)-3M #3630-59  
Coffee cup portion of logo to be embossed  
Formed "cap-over" face fits over aluminum returns ptd. to match Benjamin Moore 2116-10 Nightshade semi-gloss finish  
Cabinet to be 5" deep  
Illumination to be white LED's



### 1 x 4 BUILDING SIGN

SCALE: 1/2" = 1'-0"

SIGNAGE AREA: 4.02 SQ. FT.

LIGHTING: (3) F72 T12 C.W. / H.O. INTERNAL ILLUMINATION

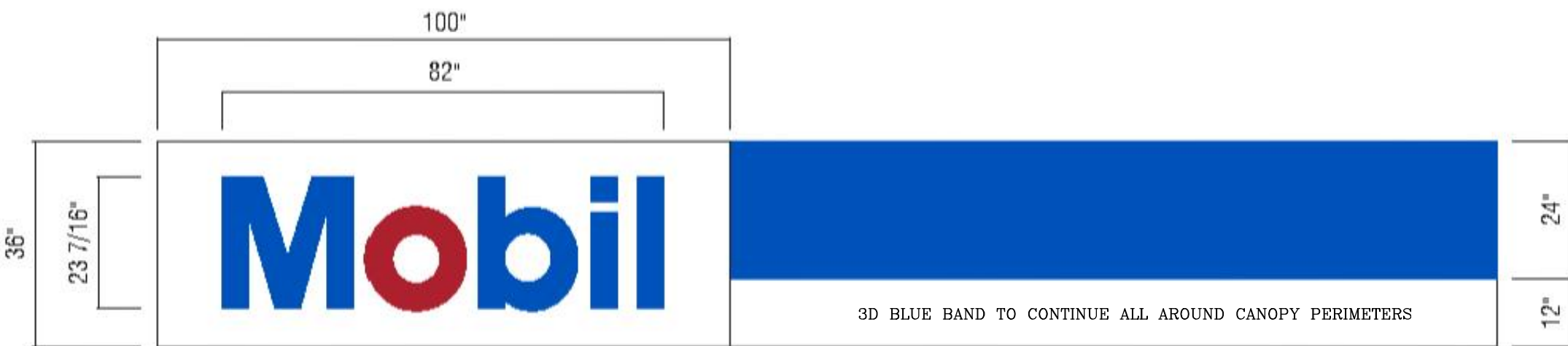
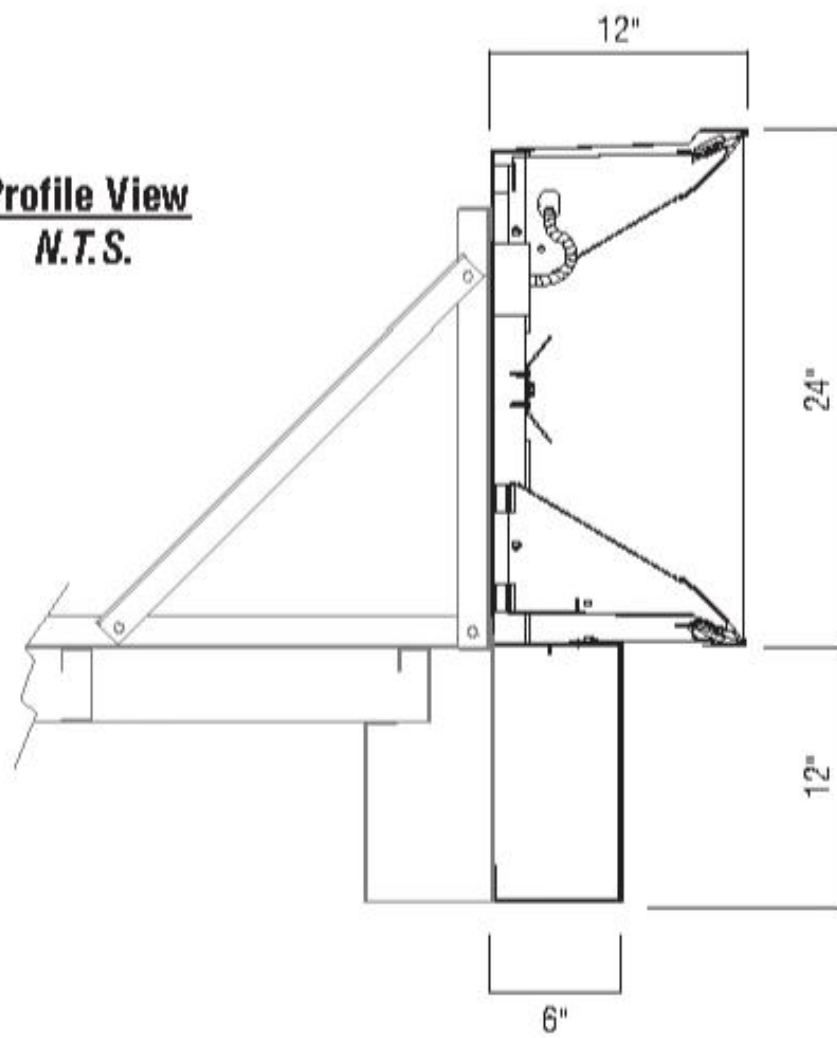
### BUILDING MOUNTED SIGN DETAILS

N.T.S.

### Mobil 3D Canopy Fascia

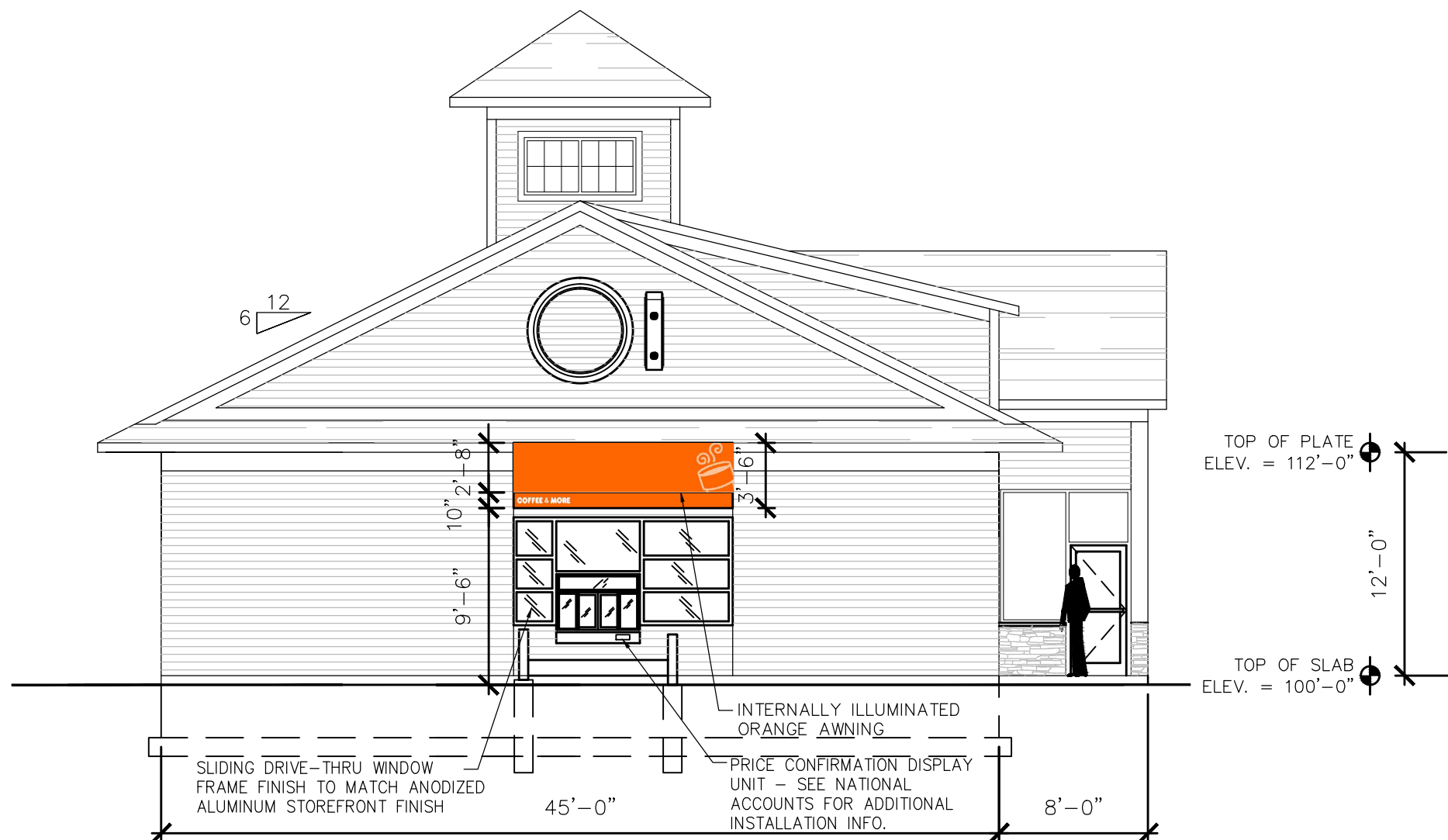
36"ht Canopy Fascia  
LED Illuminated Logo Box  
3D LED Illuminated Canopy Fascia

Profile View  
N.T.S.



### MOBIL CANOPY SIGN DETAIL

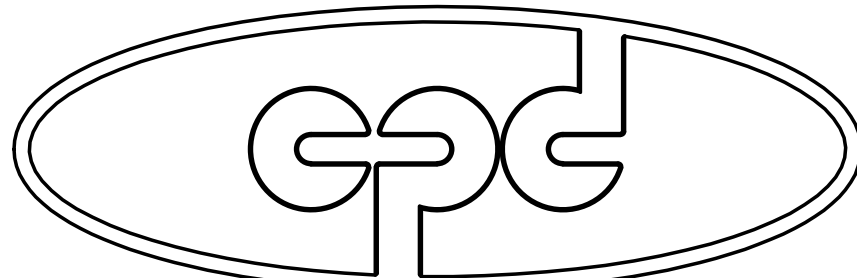
N.T.S.



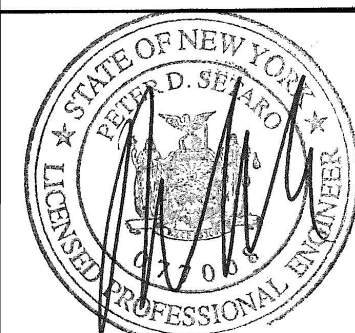
### BUILDING SOUTH ELEVATION

(INCLUDED FOR BUILDING MOUNTED SIGN LOCATIONS ONLY. SEE ARCHITECT'S PLANS FOR BUILDING DESIGN.)

N.T.S.

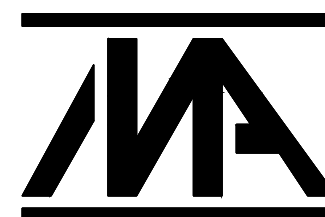


CPD ENERGY CORP.



**CHESTNUT MART OF MARLBOROUGH**  
**CHESTNUT PETROLEUM DISTRIBUTORS, INC.**  
TOWN OF MARLBOROUGH ULSTER COUNTY, NY

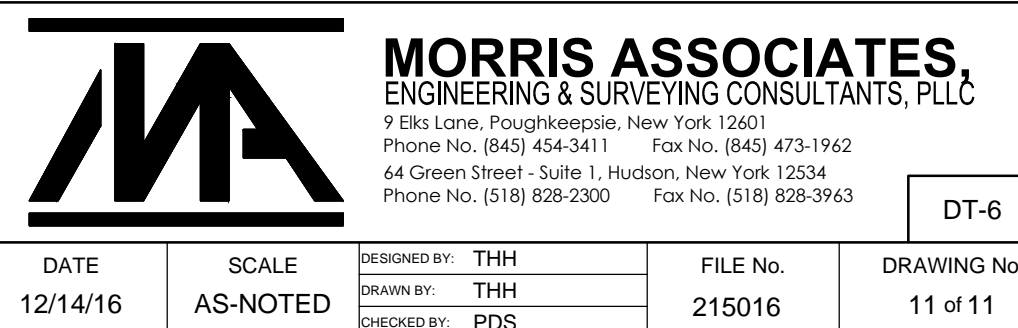
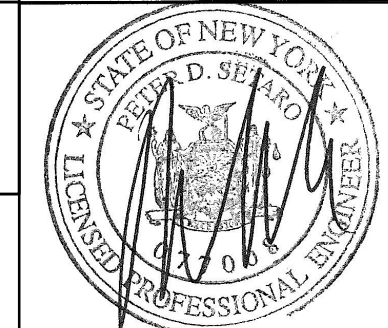
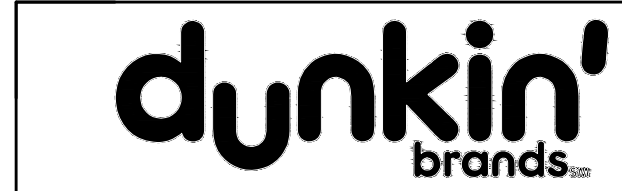
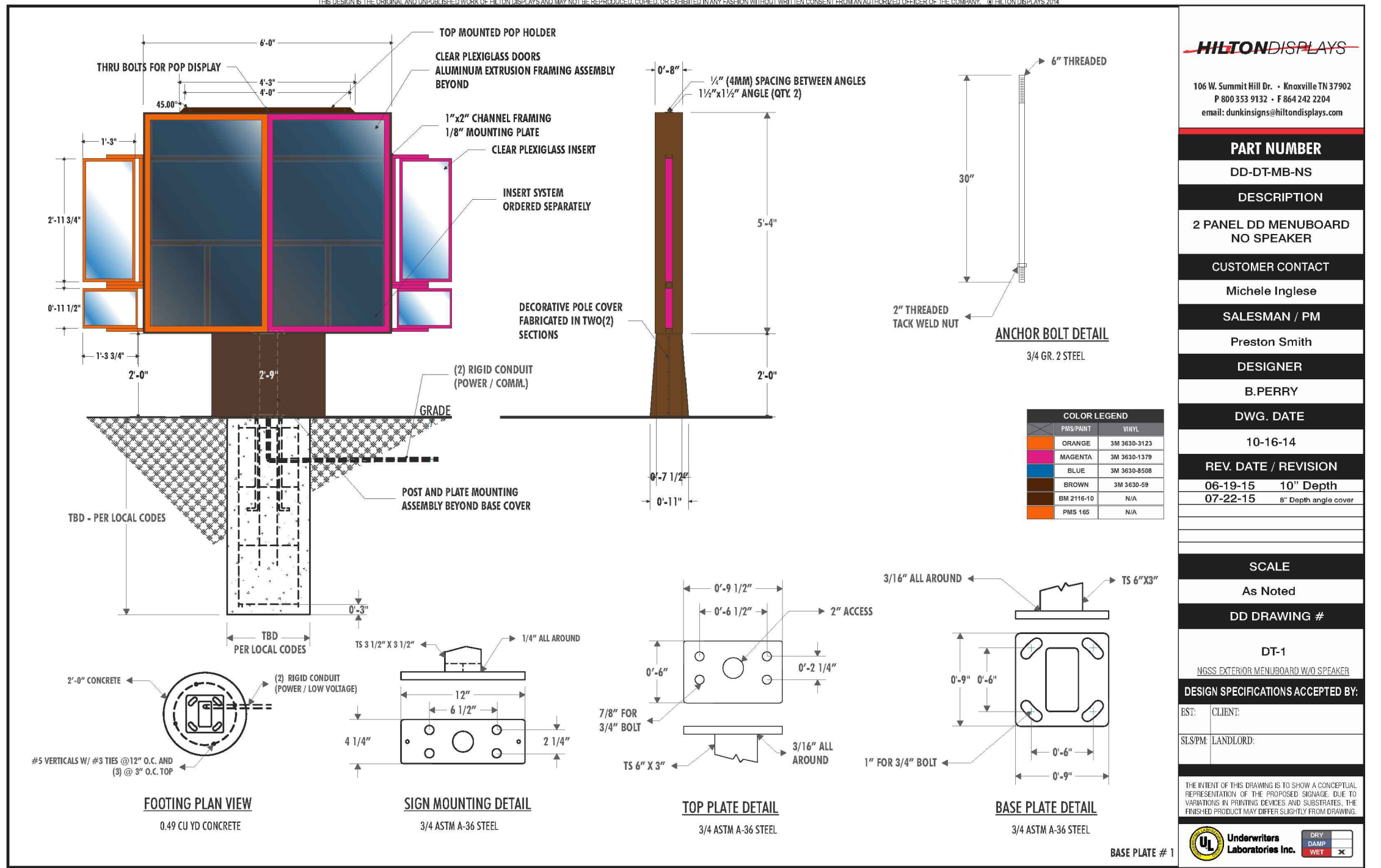
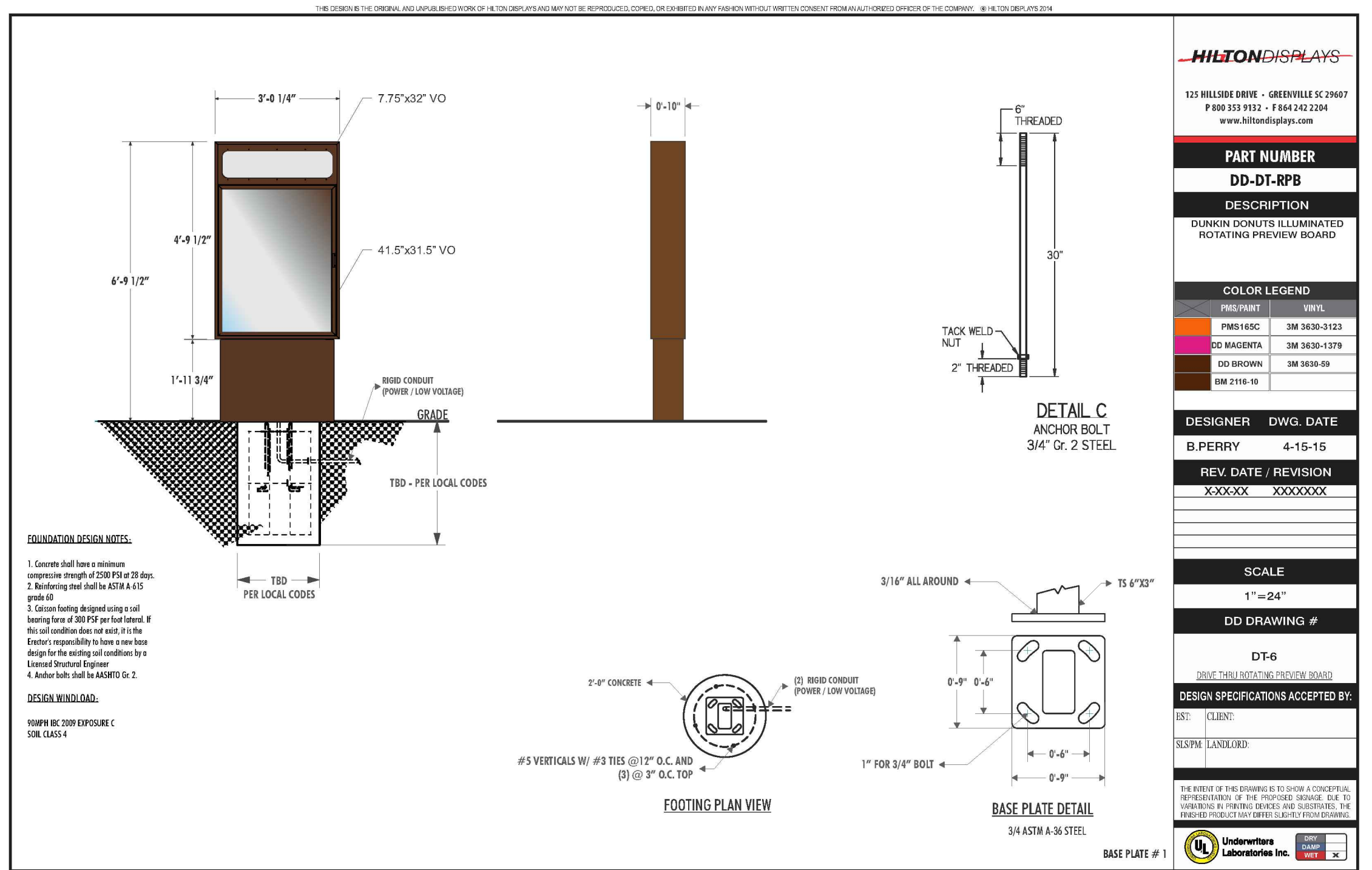
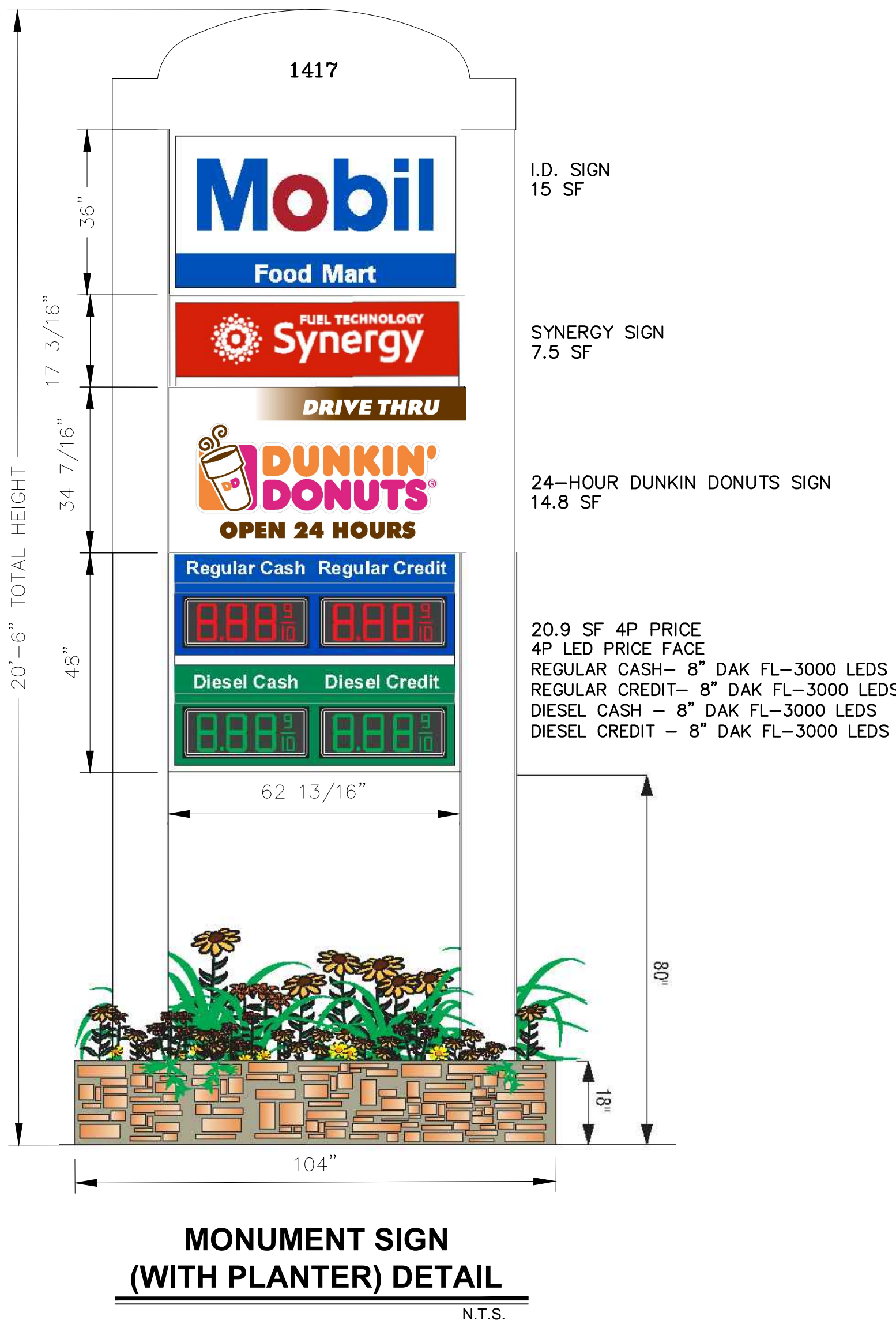
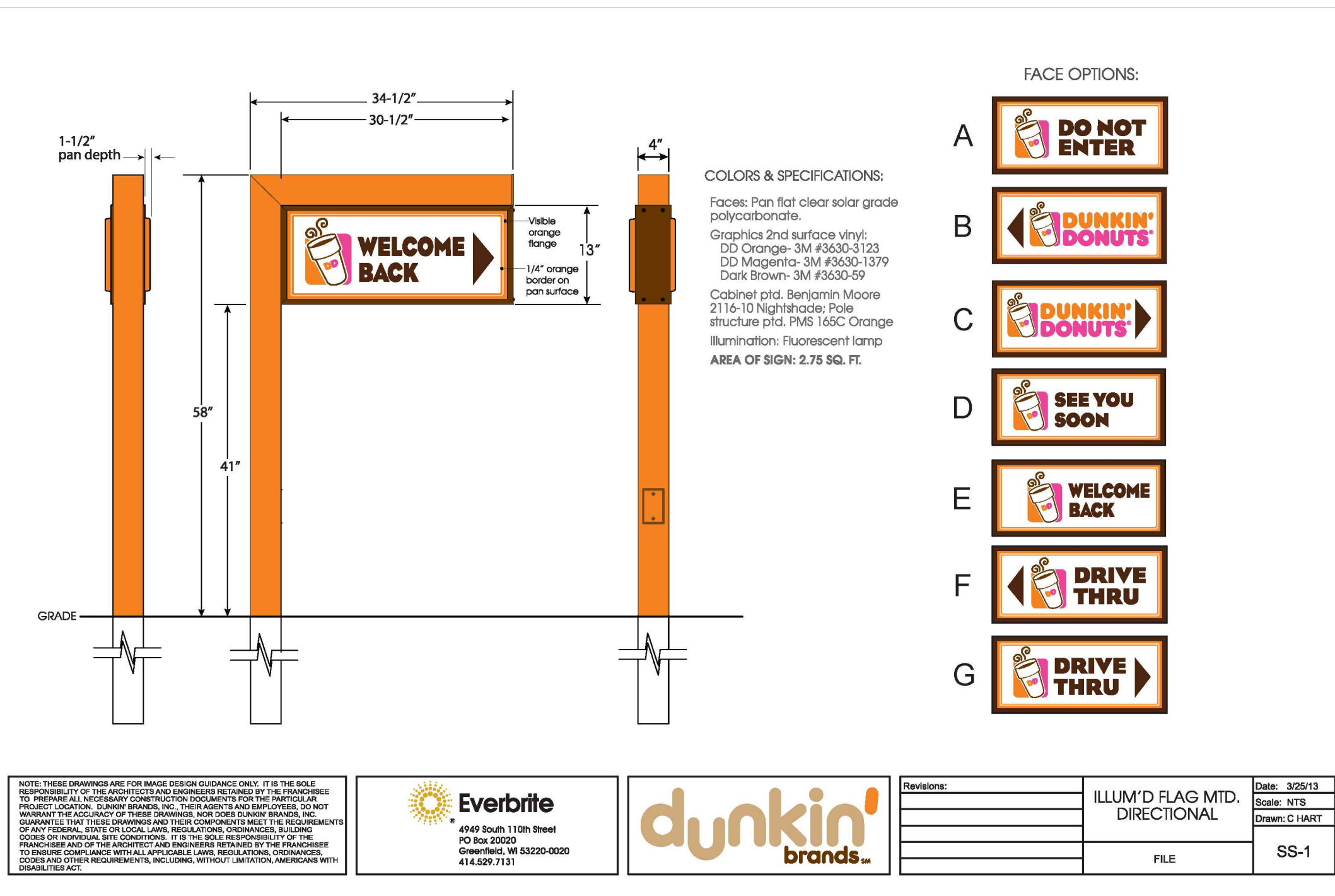
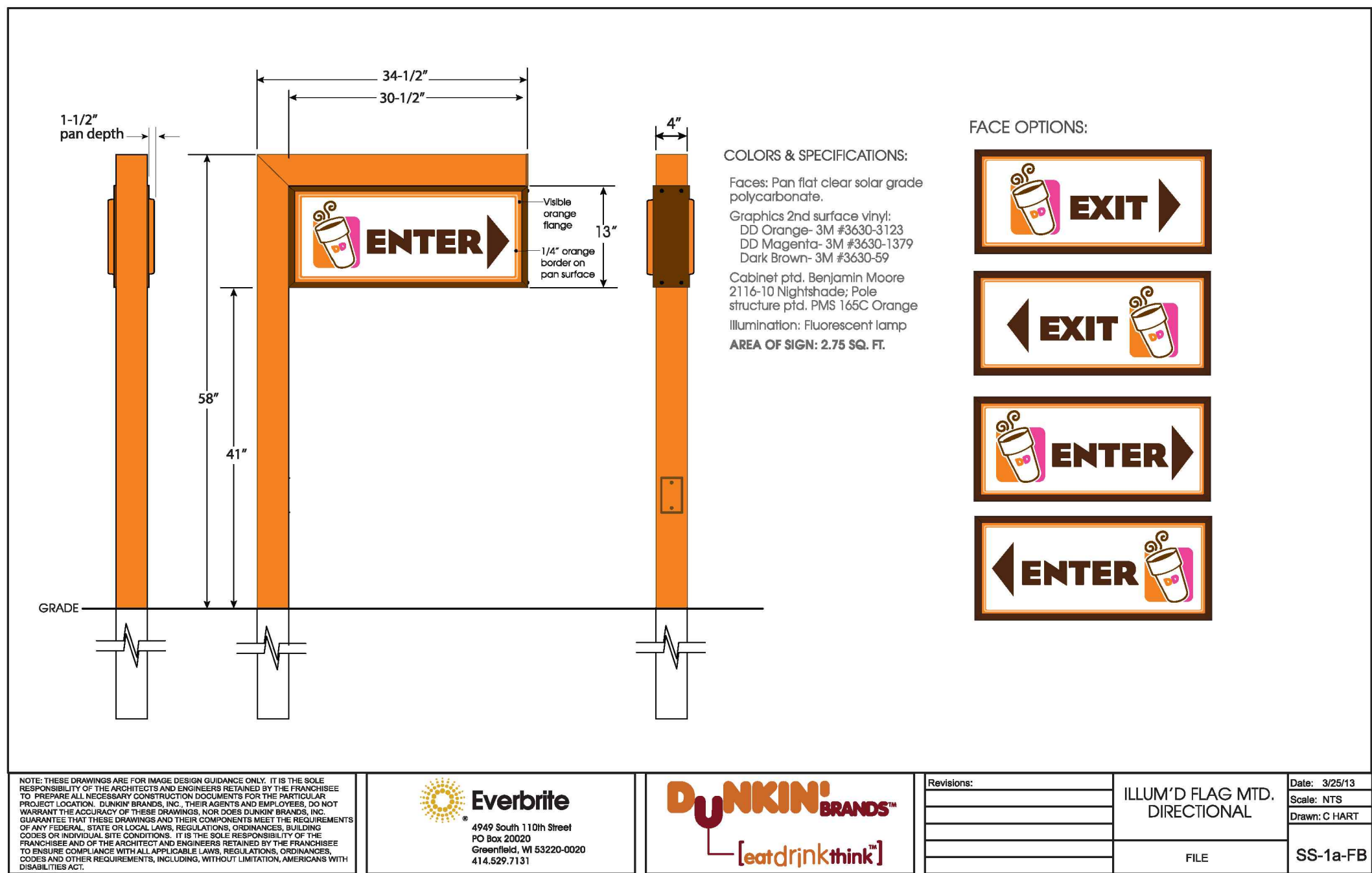
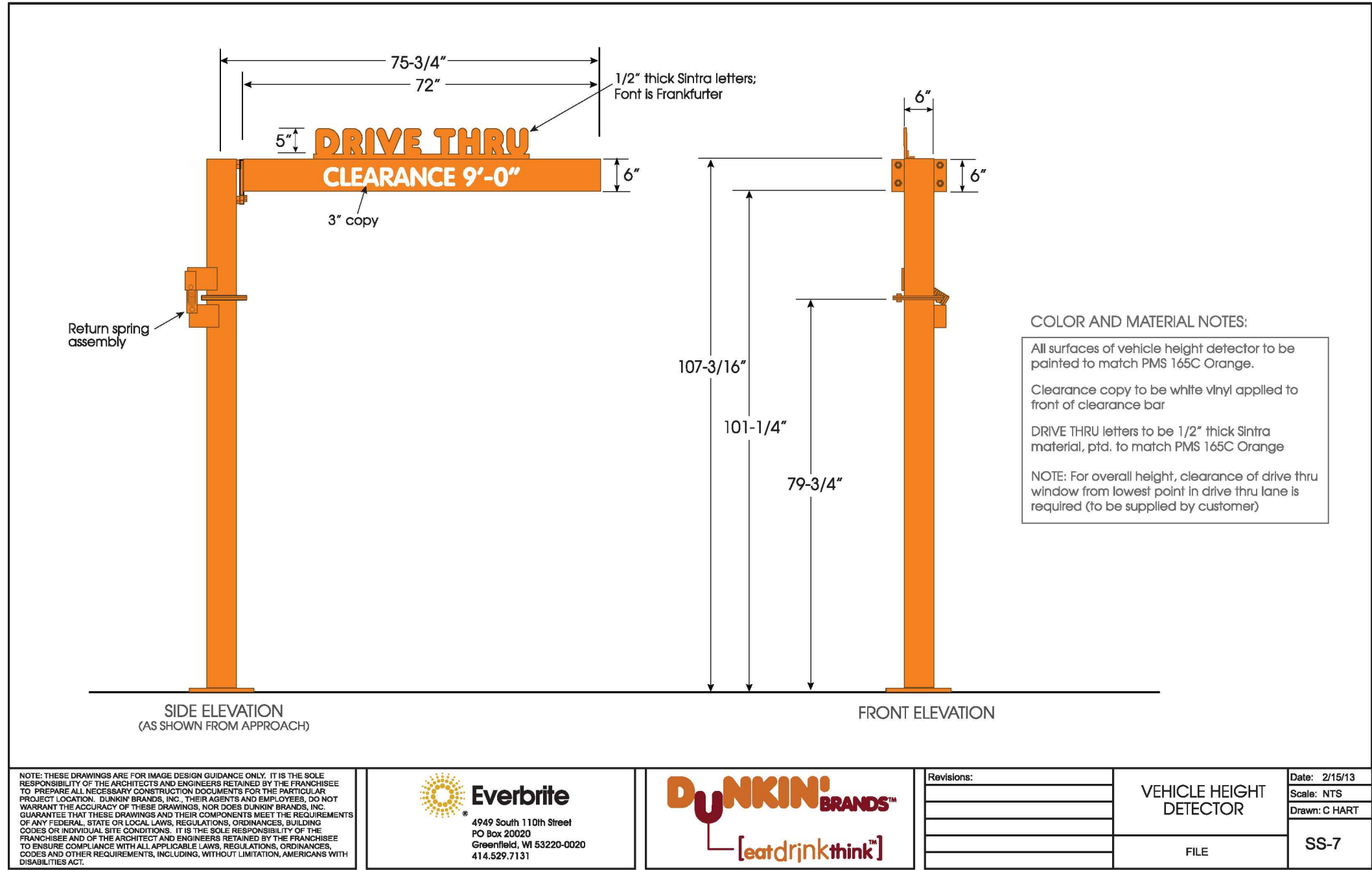
### SITE SIGNAGE DETAILS-1



**MORRIS ASSOCIATES,**  
ENGINEERING & SURVEYING CONSULTANTS, PLLC  
9 Elk Lane, Poughkeepsie, New York 12601  
Phone No. (845) 454-3411 Fax No. (845) 473-1962  
44 Green Street - Suite 1, Hudson, New York 12534  
Phone No. (518) 828-2300 Fax No. (518) 828-3963

DATE: 12/14/16 SCALE: AS-NOTED DESIGNED BY: THH DRAWN BY: THH CHECKED BY: PDS FILE No. 215016 DRAWING No. 10 of 11





REV. No.	DESCRIPTION	DATE	BY
1	CHESTNUT MART OF MARLBOROUGH CHESTNUT PETROLEUM DISTRIBUTORS, INC.	12/14/16	AS-NOTED
2	TOWN OF MARLBOROUGH	12/14/16	AS-NOTED
3	ULSTER COUNTY, NY	12/14/16	AS-NOTED
4	SITE SIGNAGE DETAILS-2	12/14/16	AS-NOTED
5	MORRIS ASSOCIATES, ENGINEERING & SURVEYING CONSULTANTS, PLLC	12/14/16	AS-NOTED
6	9 Elk Lane, Poughkeepsie, New York 12601	12/14/16	AS-NOTED
7	Phone No. (845) 454-3411 Fax No. (845) 473-1962	12/14/16	AS-NOTED
8	44 Green Street - Suite 1, Hudson, New York 12534	12/14/16	AS-NOTED
9	Phone No. (518) 628-2300 Fax No. (518) 628-3963	12/14/16	AS-NOTED
10	FILE NO.	215016	11 of 11
11	DRAWING No.	11 of 11	