

## TABLE OF BULK REQUIREMENTS

ZONING DISTRICT .....	R-Ag-1
MINIMUM LOT AREA .....	1 ACRE
MINIMUM LOT WIDTH .....	150'
MINIMUM LOT DEPTH .....	200'
MINIMUM FRONTYARD SETBACK .....	50'
MINIMUM SIDEYARD SETBACK .....	35'/80'
MINIMUM REARYARD SETBACK .....	75'
MAXIMUM BUILDING HEIGHT .....	35'
MAXIMUM BUILDING COVERAGE .....	20%

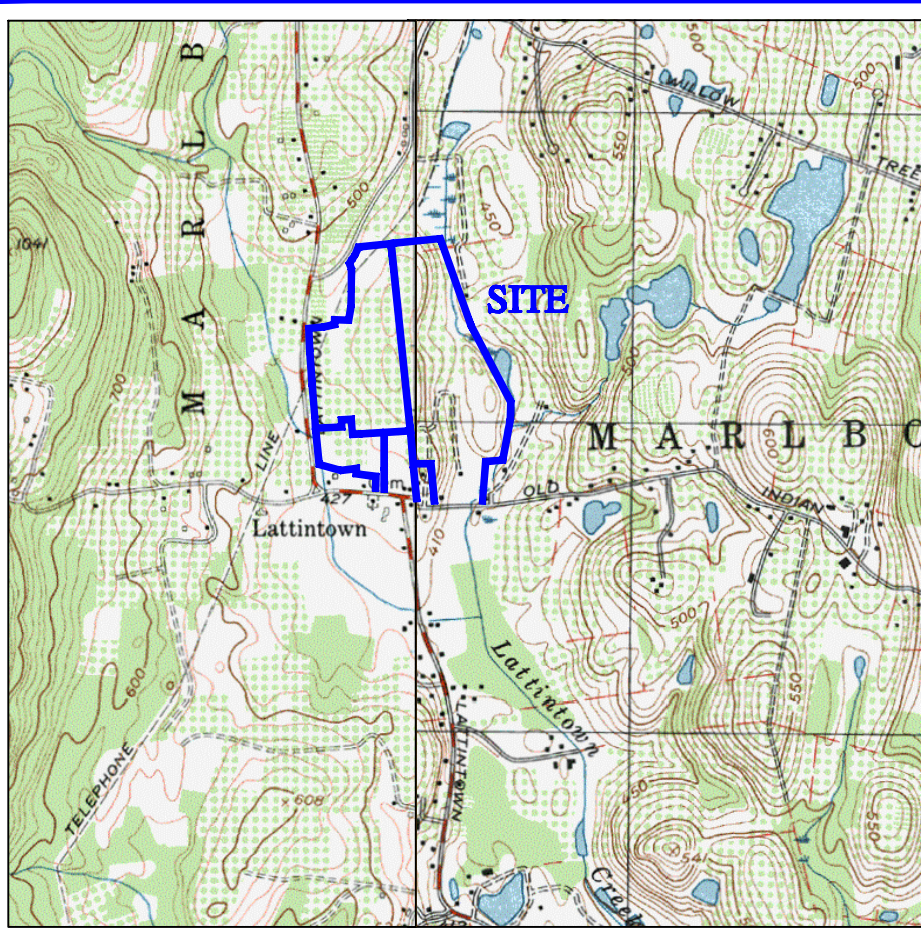
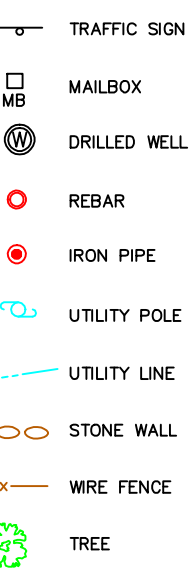
\* Parcel subject to the provisions of Town of Marlborough Zoning Code 155-32

## AGRICULTURAL NOTES

This subdivision is in an agriculturally zoned district, it does have active farming operations in the vicinity. Be advised of the following :

1. That farming does not only occur between 8:00 am and 5:00 P.M. and is dependent upon "Mother Nature"; Residents should be aware of noise from agricultural machinery being operated in nearby fields in both early morning and evening hours and noise from crop-drying fans which are run 24 hours a day during the harvesting season.
2. That the roads leading to and from the subdivision are frequently traveled by farmers and their slow moving farm vehicles and equipment.
3. That farm neighbors very often spray their crops with pesticides in accordance with accepted practices regulated by the New York State Department of Environmental Conservation (D.E.C. Notification Law Number 325, October 1988)
4. That existing agricultural operations may create both unavoidable odors and unsightliness commonly associated with farming operations in the area.
5. That there are dangers in letting children and pets roam into any adjacent agricultural field, which is private property.

## LEGEND

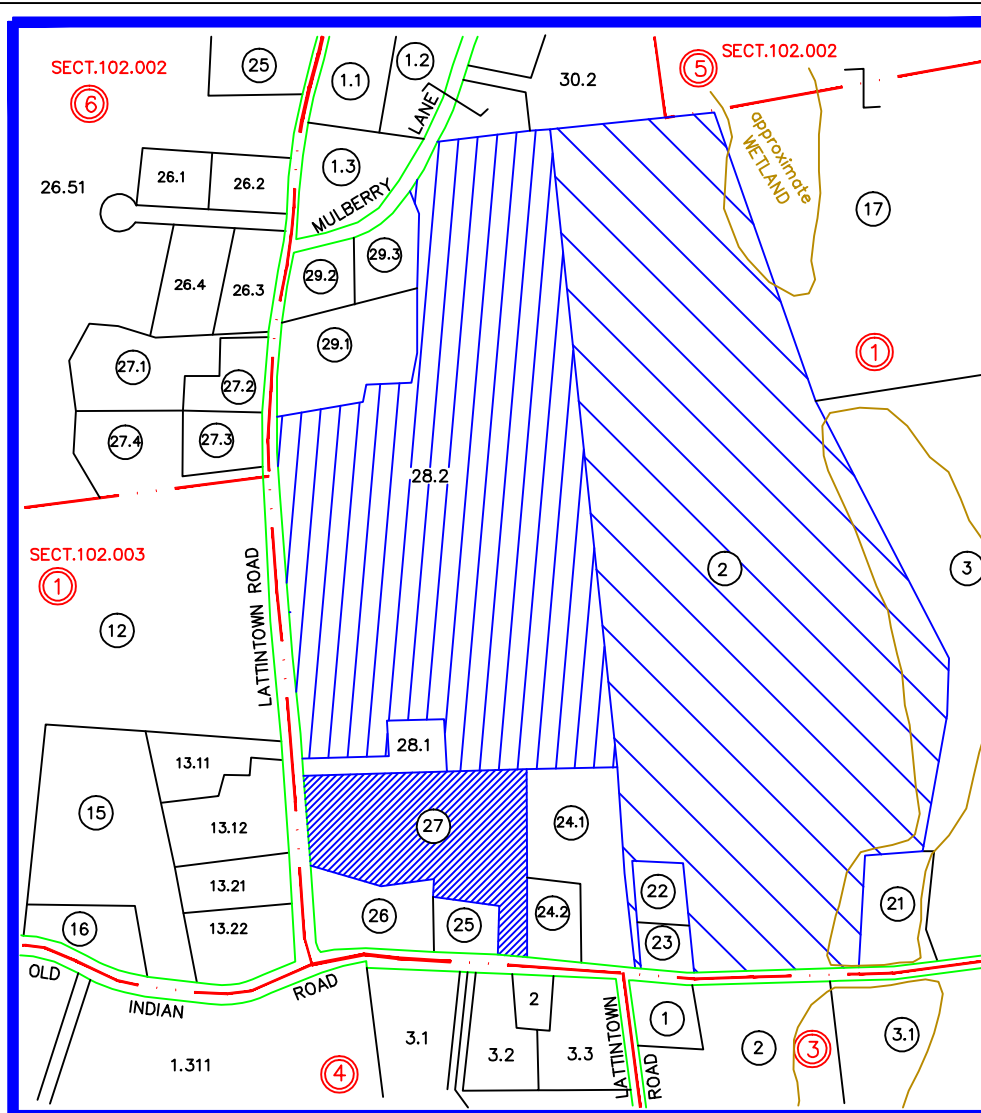


LOCATION MAP

SCALE : 1"= 2000'

USGS QUADRANGLE: CLINTONDALE

TOTAL AREA : ±89.5 ACRES



SECTION: 102.4, BLOCK: 1, LOT: 2, 28.2 &amp; 27

TAX MAP

SCALE : 1"= 600'

SBL: 102.4-1-17 Benjamin & Susan Trapani Liber 4287 Page 246  
SBL: 102.4-1-3 Roessel, Peter & Zloic Visnja Liber 3594 Page 285  
SBL: 102.4-1-21 James & Patricia Sharpe Liber 1323 Page 740

## NOTES :

- 1) Unauthorized alteration or addition to a survey map bearing a licensed Land Surveyor's Seal is a violation of Section 7209 , Subdivision 2 of the New York State Education Law.
- 2) Only copies from the original of this survey marked with an original of the Land Surveyor's inked seal or his/her embossed seal shall be considered to be valid true copies .
- 3) Subject to whatever state of facts a complete Search of Title may reveal .
- 4) Certifications indicated hereon signify that this survey was prepared in accordance with the existing Code of Practice for Professional Land Surveyors as adopted by the New York State Association of Professional Land Surveyors. Said certifications shall run only to the person so noted. Certifications are not transferable to additional institutions, their successors and/or assigns, or subsequent owners .
- 5) Sub-surface structures not visible or readily apparent are not shown and their location and extent are not certified.
- 6) Subject to all rights of ways, covenants, easements, restrictions, conditions and agreements of record.
- 7) Highway bounds shown hereon based on a 3 rod road.
- 8) Topography based on aerial survey of 11 April, 2002. Southerly Pond area topography based on field survey performed on 18 May, 2016. Elevations datum based on approximate USGS Clintondale Quadrangle.
- 9) TM Lot 28.2 subject to an easement granted to AT&T as recorded in Deed Liber 532 at page 330.
- 10) TM Lot 2 contains wetlands not shown hereon and is thereby subject to all regulations promulgated thereunder.
- 11) Parcels A & B to be conveyed and combined respectively as shown and are not to be considered buildable lots unto themselves.

## MAP REFERENCE:

- 1) "Map Prepared for Robert A. & Elaine M. LaPolla" filed with the Ulster County Clerk's Office on 04 August, 1987 as Filed Map No.7015.
- 2) "Map Prepared for Robert A. LaPolla" filed with the Ulster County Clerk's Office on 15 March, 1989 as Filed Map No.7966.
- 3) "Final Map of Subdivision of Lands of Bruce G. & Peggy C. Choate" filed with the Ulster County Clerk's Office on 05 March, 2003 as Filed Map No.03-465.
- 4) "Map of Survey of Land to be Conveyed to Trapani Farms, LLC" dated 25 May, 2012 by Brooks & Brooks LSPC.
- 5) Parcel being Lot 2 as shown on a map entitled "Final Map of Subdivision of Lands of Trapani Farms, LLC" filed with the Ulster County Clerk's Office on 14 October, 2016 as Filed Map No.16-202 and is subject to all provisions noted thereon.

## DEED REFERENCE :

TM LOT 2  
Benjamin Trapani III & Susan Trapani  
- to -  
Benjamin Trapani III, Living Trust  
& Susan E. Trapani, Living Trust  
Deed Liber 4287 Page 243  
Dated 27 April, 2006  
Filed: 17 July, 2006

## RECORD OWNER :

Benjamin Trapani III  
& Susan E. Trapani  
818 Lattintown Road  
Milton NY 12547

TM LOT 28.2  
portion of:  
Linda Nardone, Richard Nardone &  
Tracy Nardone d/b/a Crystal Jay  
- to -  
Trapani Farms, LLC  
Deed Liber 5338 Page 063  
Dated 05 June, 2012  
Filed: 12 June, 2012

Trapani Farms, LLC  
818 Lattintown Road  
Milton NY 12547

TM LOT 27  
Joseph H. Dirago Jr. & Marie Dirago  
- to -  
Lattintown Baptist Church  
Deed Liber 1464 Page 275  
Dated 13 May, 1982  
Filed: 13 May, 1982

Lattintown Baptist Church  
Old Indian Road  
Milton NY 12547

## PLANNING BOARD ENDORSEMENT

## OWNER'S CERTIFICATION

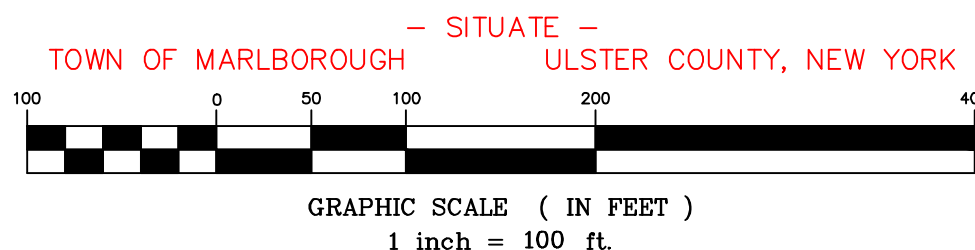
The undersigned, owner or owner's authorized representative of the property shown on this plat, does hereby certify that he/she has reviewed this plat, is familiar with this map, its contents and its notes and hereby consents to all said terms and conditions as stated hereon and agrees to file this map with the Ulster County Clerk .

Signature \_\_\_\_\_ Date \_\_\_\_\_  
Signature \_\_\_\_\_ Date \_\_\_\_\_  
Signature \_\_\_\_\_ Date \_\_\_\_\_

## SKETCH

MAP OF SUBDIVISION  
OF LAND OF

**TRAPANI FARMS, LLC**  
AND LOT LINE REVISION WITH LANDS OF  
**TRAPANI LIVING TRUST**  
AND LANDS OF  
**LATTINTOWN BAPTIST CHURCH**



LINE	BEARING	LENGTH
L1	N02°52'45"W	209.13
L2	S84°29'56"W	200.21
L3	S03°23'23"E	164.98
L4	S85°32'52"W	95.92
L5	S85°10'06"W	141.28
L6	N78°43'07"W	64.94

TM LOT 28.2 33.72 Acres  
-portion LOT 1 1.06 Acres  
-portion LOT 2 1.18 Acres  
Lot 3 31.48 Acres

TM LOT 2 ±49.6 Acres  
-PARCEL A 0.38 Acres  
Revised Lot 2 ±49.2 Acres

PARCEL A  
0.38 ACRES

LOT 1  
1.44 ACRES

PARCEL B  
0.35 ACRES

LOT 2  
1.53 ACRES

LOT 3  
31.48 ACRES

LOT 4  
1.06 ACRES

LOT 5  
1.18 ACRES

LOT 6  
64.94 ACRES

LOT 7  
95.92 ACRES

LOT 8  
141.28 ACRES

LOT 9  
200.21 ACRES

LOT 10  
209.13 ACRES

LOT 11  
209.13 ACRES

LOT 12  
209.13 ACRES

LOT 13  
209.13 ACRES

LOT 14  
209.13 ACRES

LOT 15  
209.13 ACRES

LOT 16  
209.13 ACRES

LOT 17  
209.13 ACRES

LOT 18  
209.13 ACRES

LOT 19  
209.13 ACRES

LOT 20  
209.13 ACRES

LOT 21  
209.13 ACRES

LOT 22  
209.13 ACRES

LOT 23  
209.13 ACRES

LOT 24  
209.13 ACRES

LOT 25  
209.13 ACRES

LOT 26  
209.13 ACRES

LOT 27  
209.13 ACRES

LOT 28  
209.13 ACRES

LOT 29  
209.13 ACRES

LOT 30  
209.13 ACRES

LOT 31  
209.13 ACRES

LOT 32  
209.13 ACRES

LOT 33  
209.13 ACRES

LOT 34  
209.13 ACRES

LOT 35  
209.13 ACRES

LOT 36  
209.13 ACRES

LOT 37  
209.13 ACRES

LOT 38  
209.13 ACRES

LOT 39  
209.13 ACRES

LOT 40  
209.13 ACRES

LOT 41  
209.13 ACRES

LOT 42  
209.13 ACRES

LOT 43  
209.13 ACRES

LOT 44  
209.13 ACRES

LOT 45  
209.13 ACRES

LOT 46  
209.13 ACRES

LOT 47  
209.13 ACRES

LOT 48  
209.13 ACRES

LOT 49  
209.13 ACRES

LOT 50  
209.13 ACRES

LOT 51  
209.13 ACRES

LOT 52  
209.13 ACRES

LOT 53  
209.13 ACRES

LOT 54  
209.13 ACRES

LOT 55  
209.13 ACRES

LOT 56  
209.13 ACRES

LOT 57  
209.13 ACRES

LOT 58  
209.13 ACRES

LOT 59  
209.13 ACRES

LOT 60  
209.13 ACRES

LOT 61  
209.13 ACRES

LOT 62  
209.13 ACRES

LOT 63  
209.13 ACRES

LOT 64  
209.13 ACRES

LOT 65  
209.13 ACRES

LOT 66  
209.13 ACRES

LOT 67  
209.13 ACRES

LOT 68  
209.13 ACRES

LOT 69  
209.13 ACRES

LOT 70  
209.13 ACRES

LOT 71  
209.13 ACRES

LOT 72  
209.13 ACRES

LOT 73  
209.13 ACRES

LOT 74  
209.13 ACRES

LOT 75  
209.13 ACRES

LOT 76  
209.13 ACRES

LOT 77  
209.13 ACRES

LOT 78  
209.13 ACRES

LOT 79  
209.13 ACRES

LOT 80  
209.13 ACRES

LOT 81  
209.13 ACRES

LOT 82  
209.13 ACRES

LOT 83  
209.13 ACRES

LOT 84  
209.13 ACRES

LOT 85  
209.13 ACRES

LOT 86  
209.13 ACRES

LOT 87  
209.13 ACRES

LOT 88  
209.13 ACRES

LOT 89  
209.13 ACRES

LOT 90  
209.13 ACRES

LOT 91  
209.13 ACRES

LOT 92  
209.13 ACRES

LOT 93  
209.13 ACRES

LOT 94  
209.13 ACRES

LOT 95  
209.13 ACRES

LOT 96  
209.13 ACRES

LOT 97  
209.13 ACRES

LOT 98  
209.13 ACRES

LOT 99  
209.13 ACRES

LOT 100  
209.13 ACRES

LOT 101  
209.13 ACRES

LOT 102  
209.13 ACRES

LOT 103  
209.13 ACRES

LOT 104  
209.13 ACRES

LOT 105  
209.13 ACRES

LOT 106  
209.13 ACRES

LOT 107  
209.13 ACRES

LOT 108  
209.13 ACRES

LOT 109  
209.13 ACRES

LOT 110  
209.13 ACRES

LOT 111  
209.13 ACRES

LOT 112  
209.13 ACRES

LOT 113  
209.13 ACRES

LOT 114  
209.13 ACRES

LOT 115  
209.13 ACRES

LOT 116  
209.13 ACRES

LOT 117  
209.13 ACRES

LOT 118  
209.13 ACRES

LOT 119  
209.13 ACRES

LOT 120  
209.13 ACRES

LOT 121  
209.13 ACRES

LOT 122  
209.13 ACRES

LOT 123  
209.13 ACRES

LOT 124  
209.13 ACRES

LOT 125  
209.13 ACRES

LOT 126  
209.13 ACRES

LOT 127  
209.13 ACRES

LOT 128  
209.13 ACRES

LOT 129  
209.13 ACRES

LOT 130  
209.13 ACRES

LOT 131  
209.13 ACRES

LOT 132  
209.13 ACRES

LOT 133  
209.13 ACRES

LOT 134  
209.13 ACRES

LOT 135  
209.13 ACRES

LOT 136  
209.13 ACRES

LOT 137  
209.13 ACRES

LOT 138  
209.13 ACRES

LOT 139  
209.13 ACRES

LOT 140  
209.13 ACRES

LOT 141  
209.13 ACRES

LOT 142  
209.13 ACRES

LOT 143  
209.13 ACRES

LOT 144  
209.13 ACRES

LOT 145  
209.13 ACRES

LOT 146  
209.13 ACRES

LOT 147  
209.13 ACRES

LOT 148  
209.13 ACRES

LOT 149  
209.13 ACRES

LOT 150  
209.13 ACRES

LOT 151  
209.13 ACRES

LOT 152  
209.13 ACRES

LOT 153  
209.13 ACRES

LOT 154  
209.13 ACRES

LOT 155  
209.13 ACRES

LOT 156  
209.13 ACRES

LOT 157  
209.13 ACRES

LOT 158  
209.13 ACRES

LOT 159  
209.13 ACRES

LOT 160  
209.13 ACRES

LOT 161  
209.13 ACRES

LOT 162  
209.13 ACRES

LOT 163  
209.13 ACRES

LOT 164  
209.13 ACRES

LOT 165  
209.13 ACRES

LOT 166  
209.13 ACRES

LOT 167  
209.13 ACRES

LOT 168  
209.13 ACRES

LOT 169  
209.13 ACRES

LOT 170  
209.13 ACRES

LOT 171  
209.13 ACRES

LOT 172  
209.13 ACRES

LOT 173  
209.13 ACRES

LOT 174  
209.13 ACRES

LOT 175  
209.13 ACRES

LOT 176  
209.13 ACRES

LOT 177  
209.13 ACRES

LOT 178  
209.13 ACRES

LOT 179  
209.13 ACRES

LOT 180  
209.13 ACRES

LOT 181  
209.13 ACRES

LOT 182  
209.13 ACRES