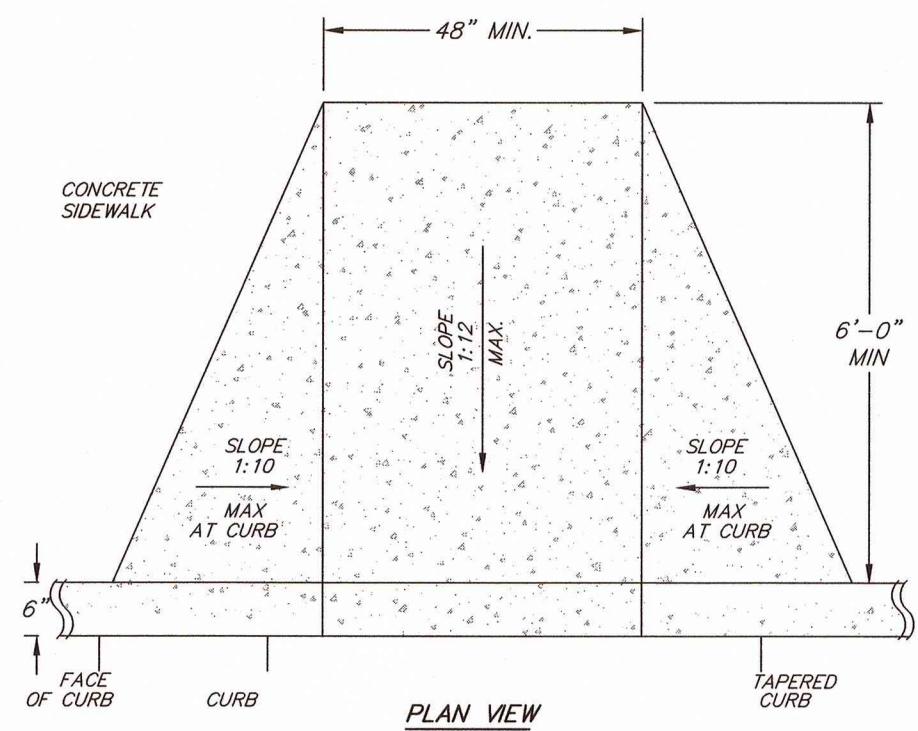


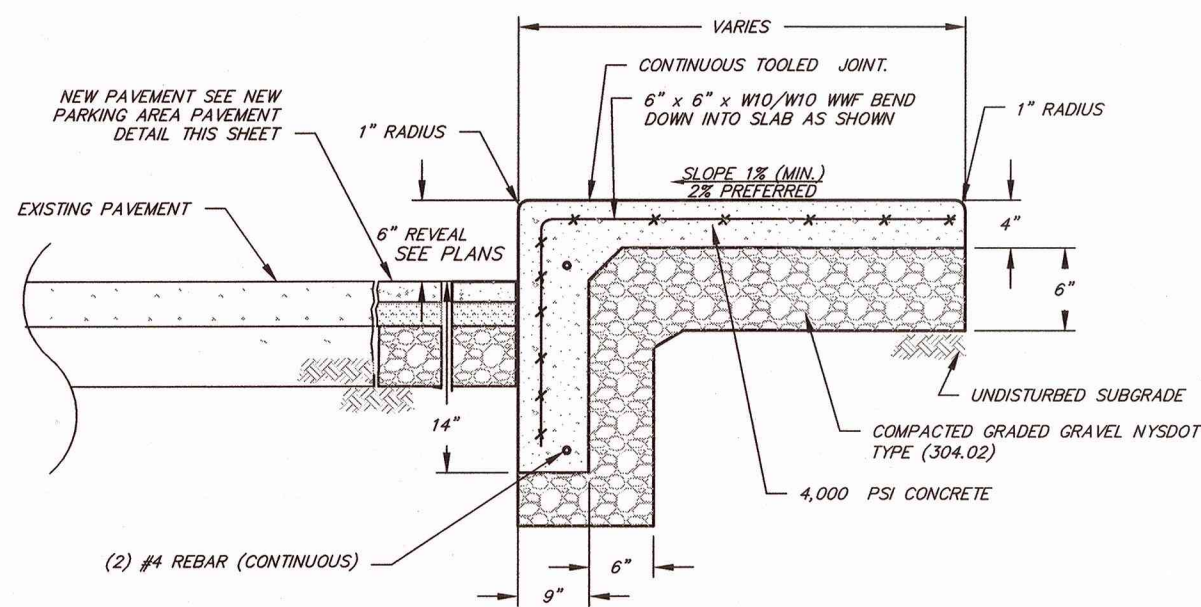
A.D.A. ACCESSIBLE STALL DETAIL

N.T.S.



A.D.A. ACCESSIBLE ACCESS RAMP DETAIL

N.T.S.

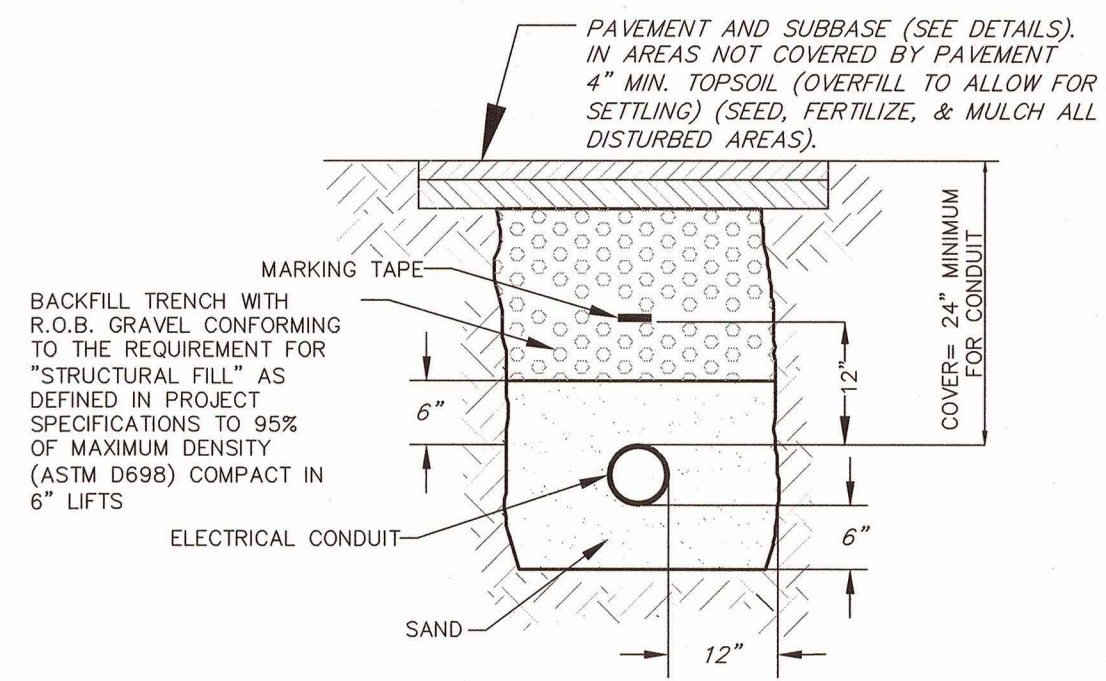
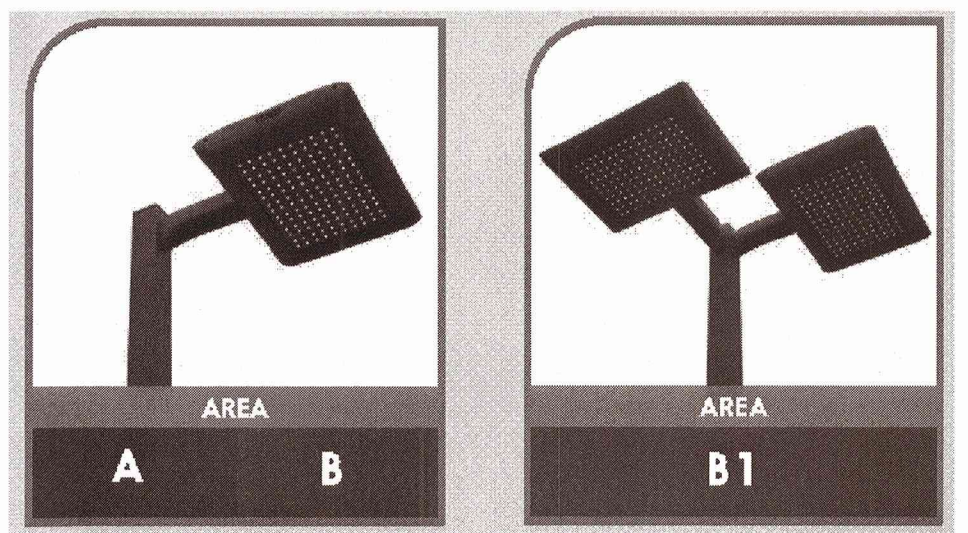


COMBINATION CURB AND WALK DETAIL

N.T.S.

NOTE:
PROVIDE TOOLED JOINTS AT 48\"/>

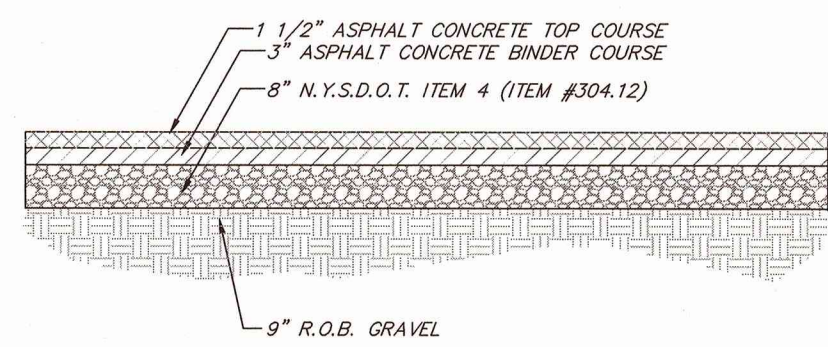
CREE LIGHTING
ARE-EDG SERIES LED AREA LIGHT
ASSEMBLIES (SEE PLANS BY RLA)



NOTE: EXCAVATING OVER 5' REQUIRES SHEETING/SHORING OR OVER EXCAVATION OF TRENCH SIDE WALLS PER OSHA.

ELECTRICAL TRENCH DETAIL

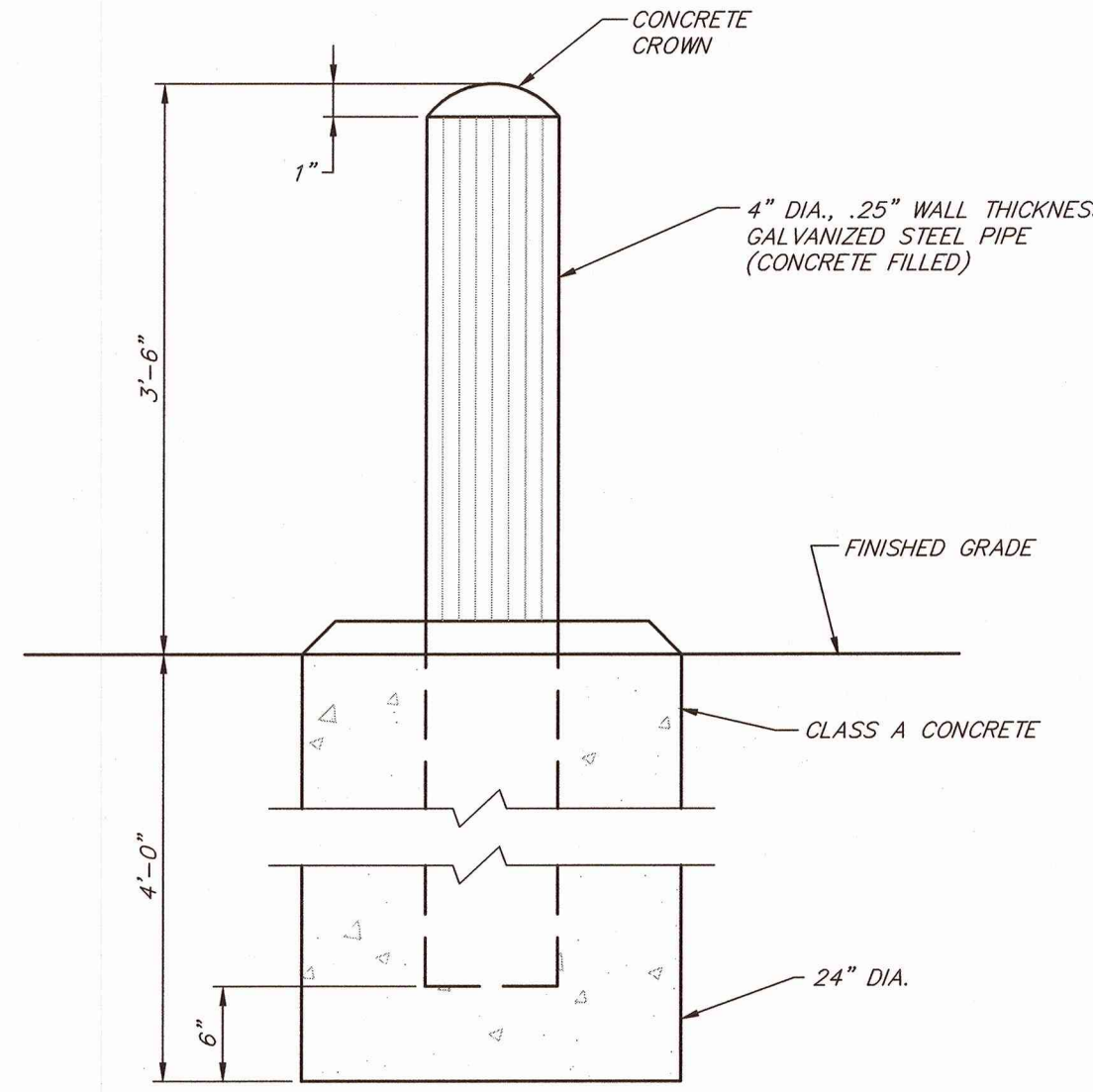
N.T.S.



DRIVEWAY PAVEMENT DETAIL

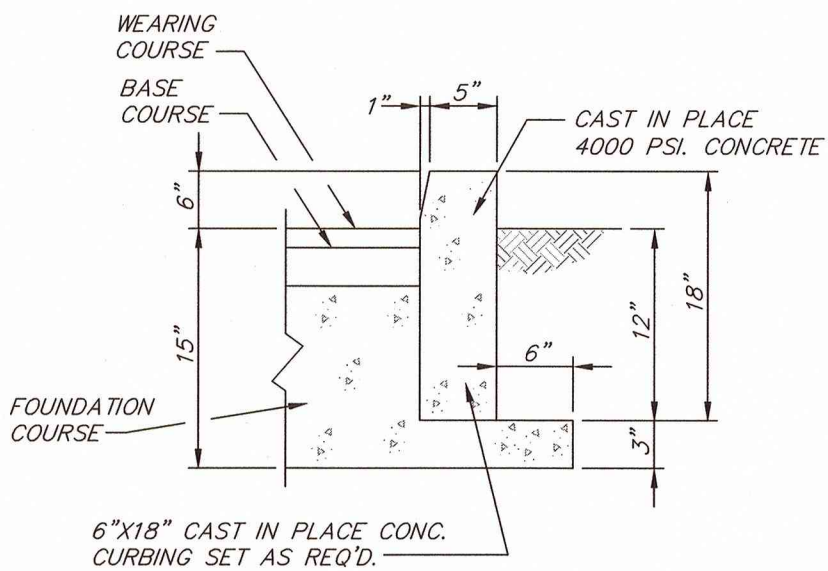
N.T.S.

NOTE:
DEPTH VARIES TO MEET EXISTING GRADE



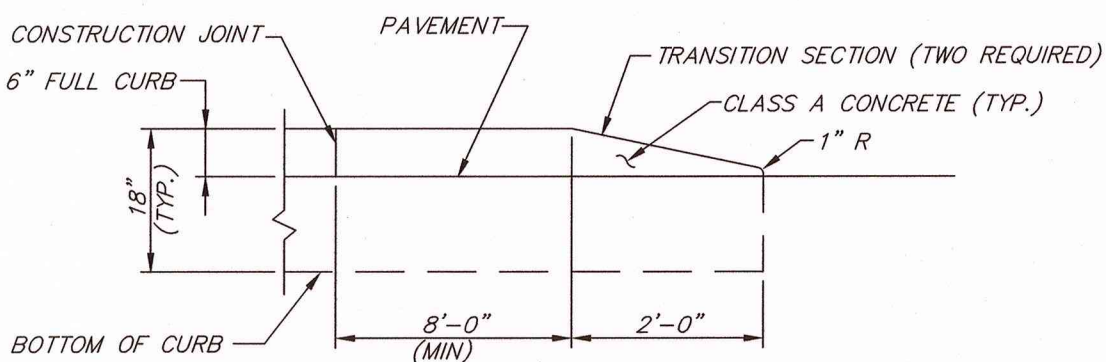
TYPICAL BOLLARD DETAIL

N.T.S.



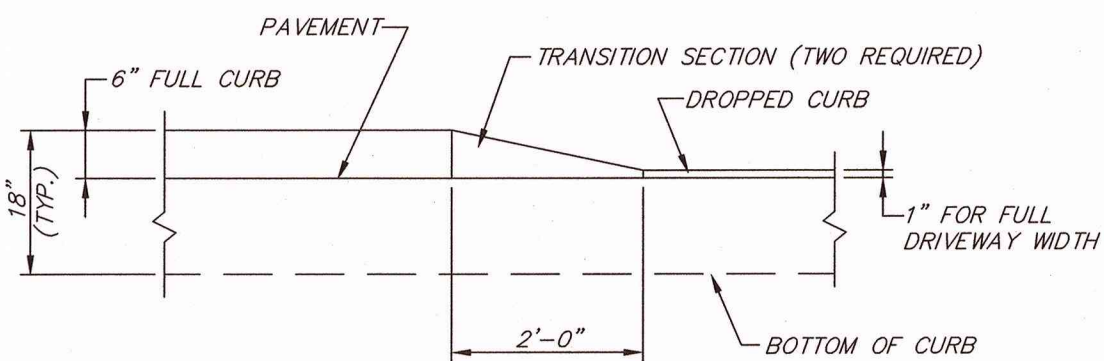
TYPICAL CAST IN PLACE CONCRETE CURB DETAIL

N.T.S.



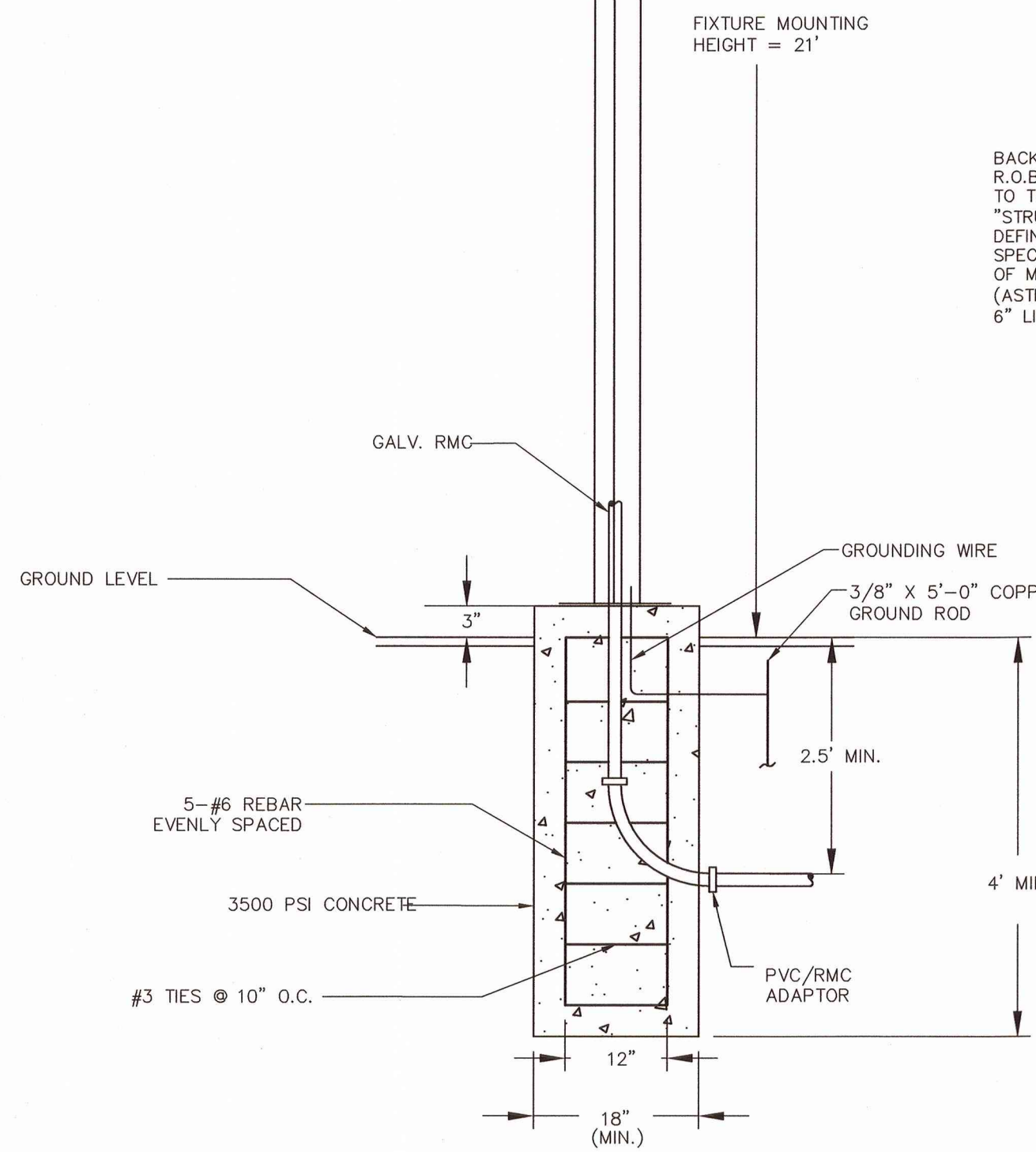
TYPICAL CONCRETE CURB END TAPER

N.T.S.



TYPICAL CURB CUT TRANSITION DETAIL

N.T.S.

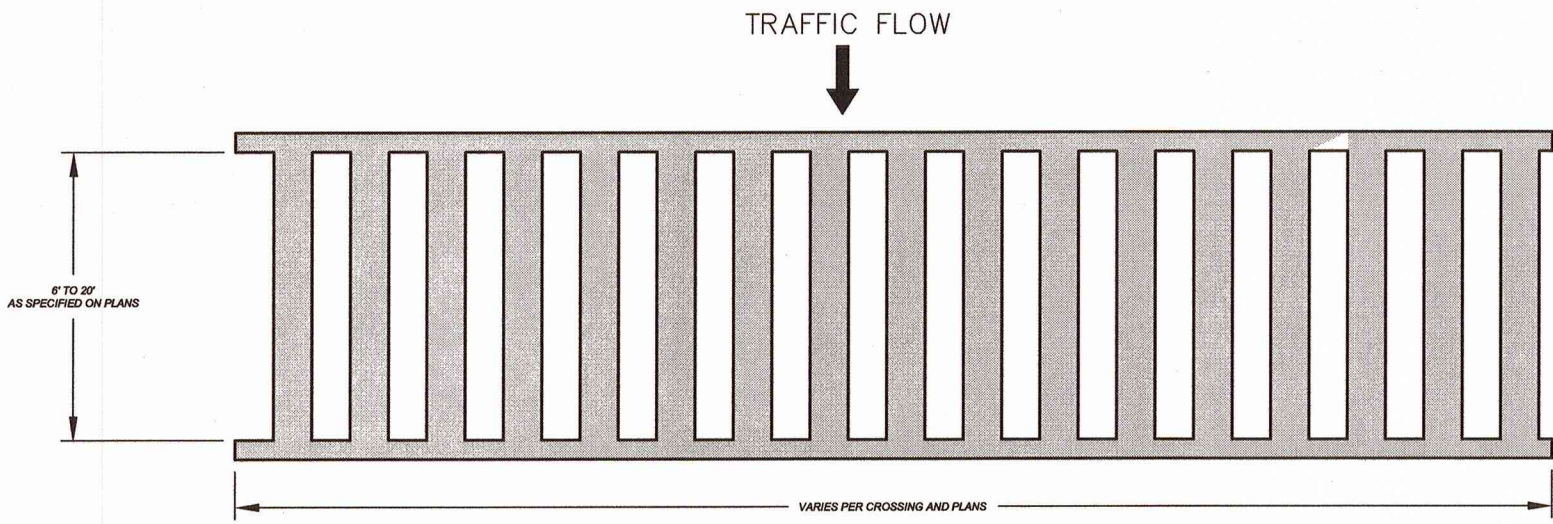


PARKINGLOT LIGHTING ASSEMBLY DETAIL

N.T.S.

NOTES:

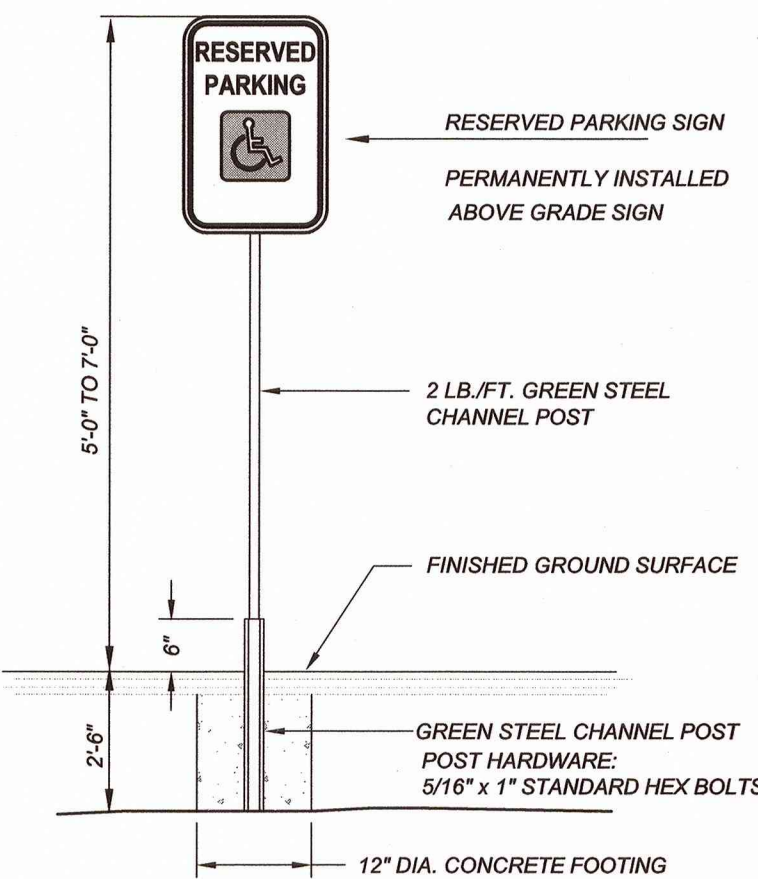
1. PROVIDE 3\"/>



TYPICAL CROSSWALK DETAIL

NOTES:

1. CROSSWALK LINES SHALL BE WHITE IN COLOR.
2. CROSSWALKS SHALL BE A MINIMUM OF 6\"/>



ACCESSIBLE PARKING SIGN DETAIL

N.T.S.

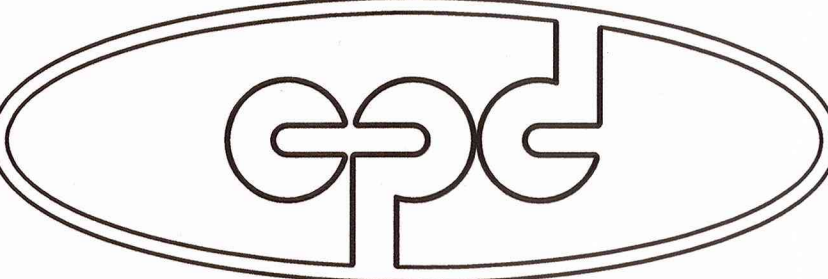
NOTES:
THE R7-8 SIGN SHALL HAVE GREEN LEGEND, EXCEPT THAT THE DISABLED PERSON SYMBOL SHALL HAVE WHITE LEGEND ON A BLUE BACKGROUND.

THE NO PARKING SIGN MAY BE MOUNTED ON THE PROPOSED BOLLARDS, AS AN ALTERNATE TO THE POST INDICATED ABOVE.

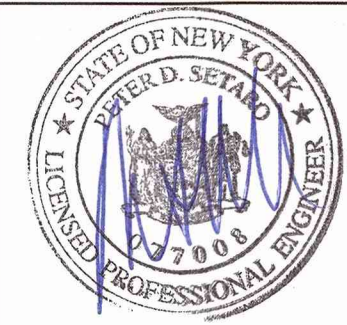
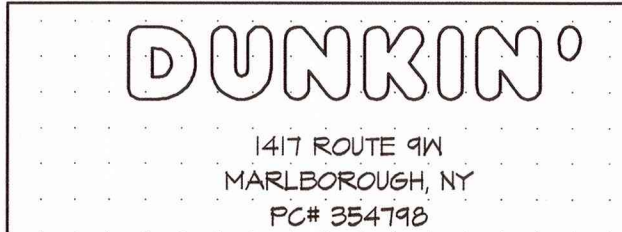


NOTE:

ALL SIGN DESIGNATION PER "MANUAL OF UNIFORM TRAFFIC CONTROL DEVICES".



CPD ENERGY CORP.



4	REVISED FOR SUBMISSION	01/09/20	ZS
3	REVISED FOR SUBMISSION	05/22/19	ZS
2	REVISED PARKING PER ZONING COMMENT	03/13/2017	THH
1	REVISED FOR P.B. SUBMISSION	01/30/2017	THH
REV. No.	DESCRIPTION	DATE	BY

CHESTNUT MART OF MARLBOROUGH
CHESTNUT PETROLEUM DISTRIBUTORS, INC.
TOWN OF MARLBOROUGH ULSTER COUNTY, NY

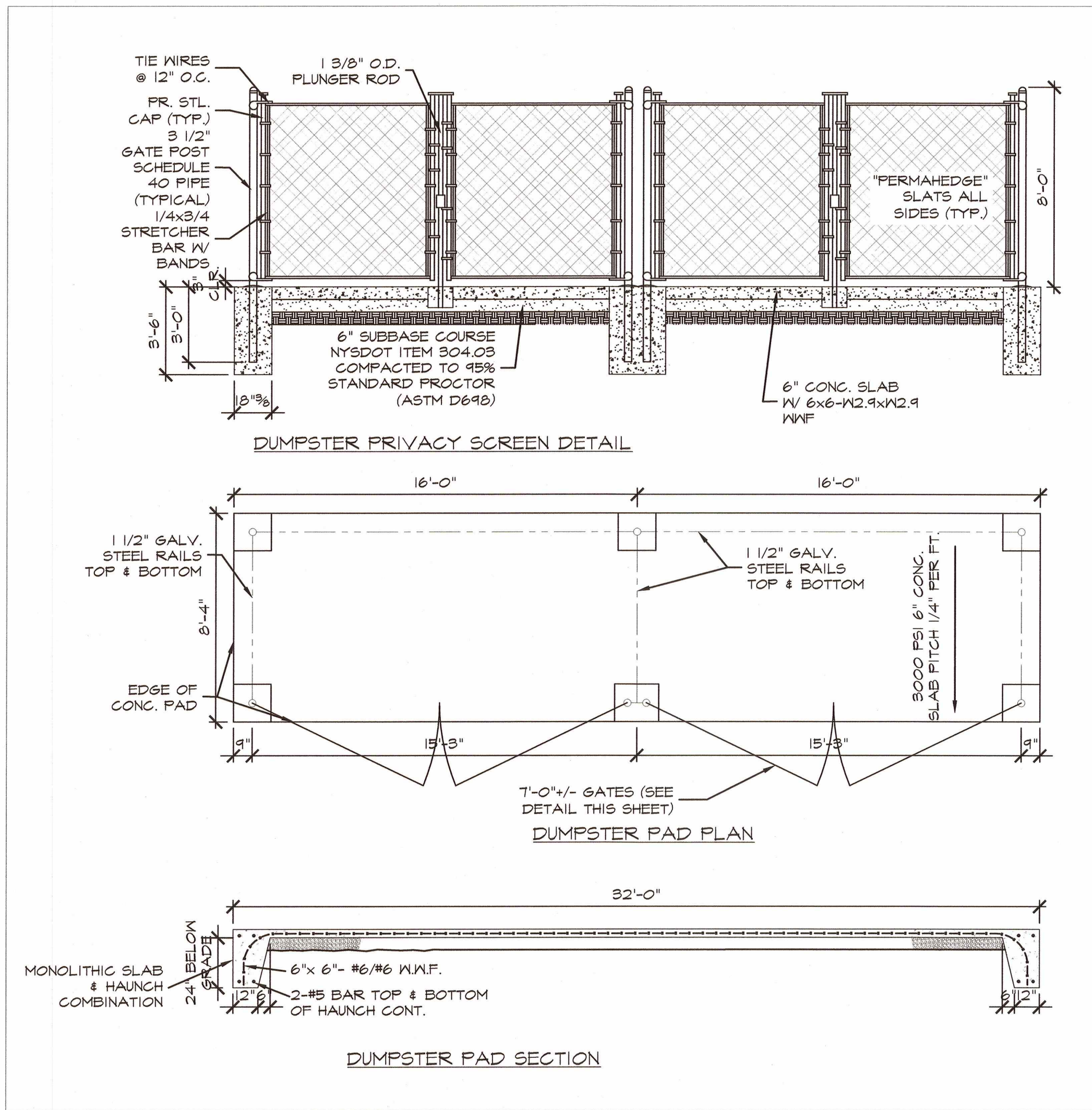
SITE DETAILS-1

9 ELKS LANE
POUGHKEEPSIE, NEW YORK 12601
TEL (845) 454-3411
FAX (845) 473-1962

CPLteam.com
ARCHITECTURE • ENGINEERING • PLANNING

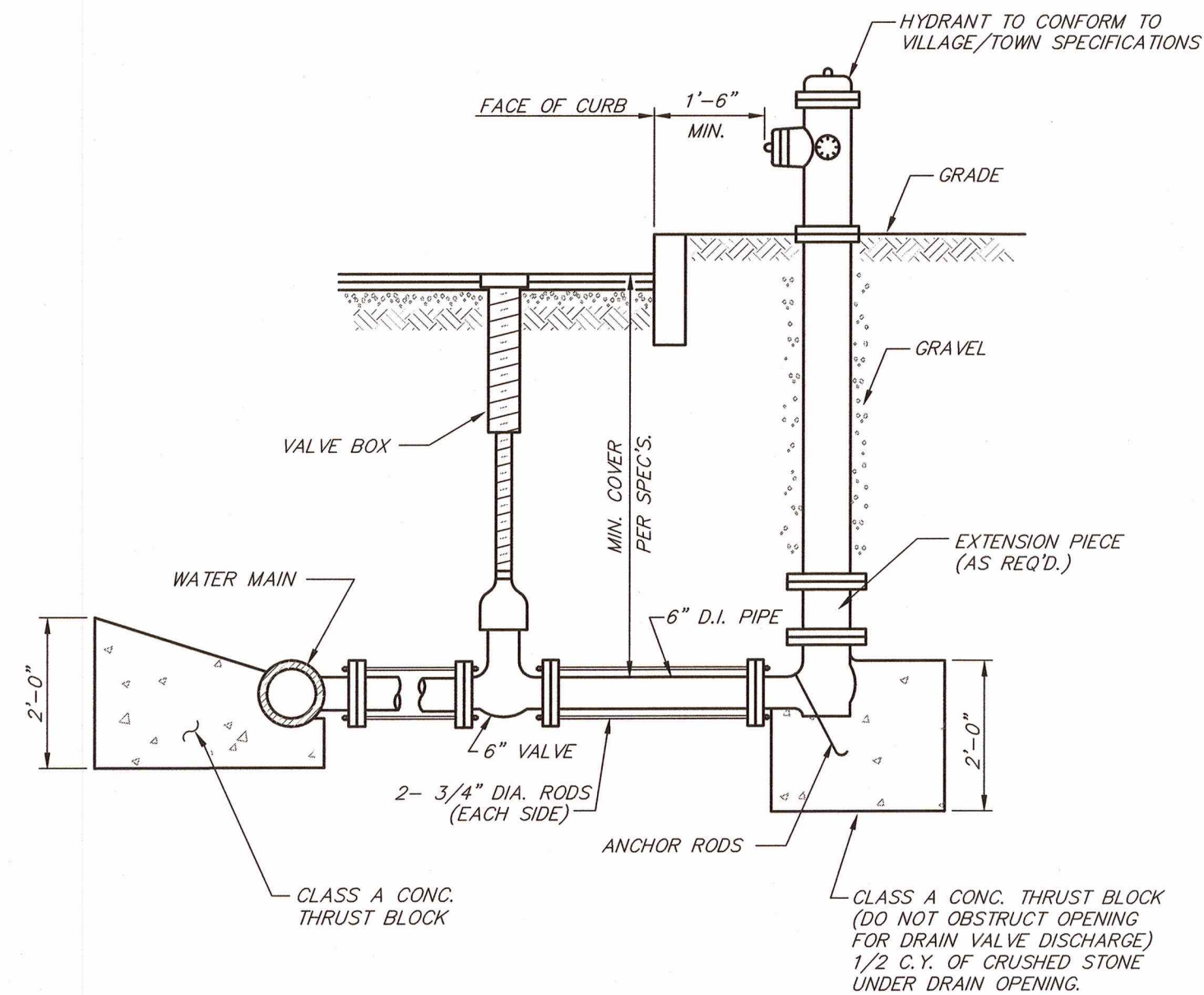
DATE 12/14/16	SCALE AS-NOTED	DESIGNED BY: THH DRAWN BY: THH CHECKED BY: PDS	FILE No. 215016	DRAWING No. 7 of 12
------------------	-------------------	--	--------------------	------------------------

DT-1



DUMPSTER ENCLOSURE DETAIL

N.T.S.



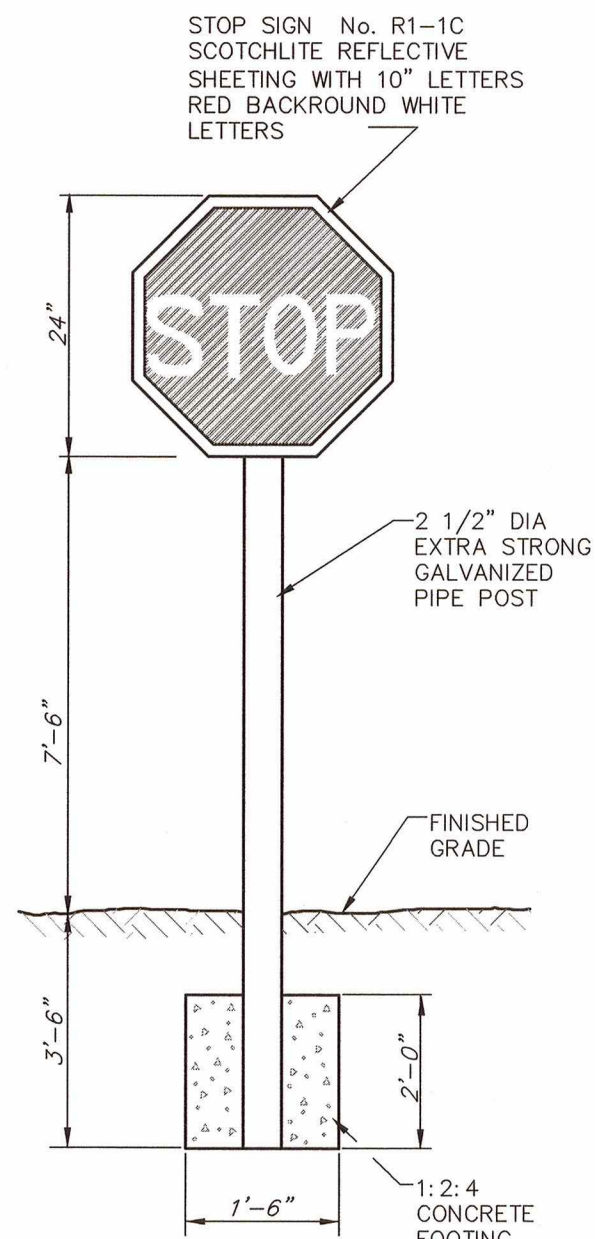
TYPICAL HYDRANT SETTING DETAIL

N.T.S.

- NOTES:**
1. FIRE HYDRANT TO CONFORM TO TOWN OR FIRE DISTRICT STANDARDS
 2. ALL CONCRETE THRUST BLOCKS TO BEAR ON UNDISTURBED GROUND
 3. 4 - 3/8" DIA. BITUMINOUS COATED RODS WILL BE REQUIRED TIEING HYDRANT TO VALVE TO WATER MAIN.

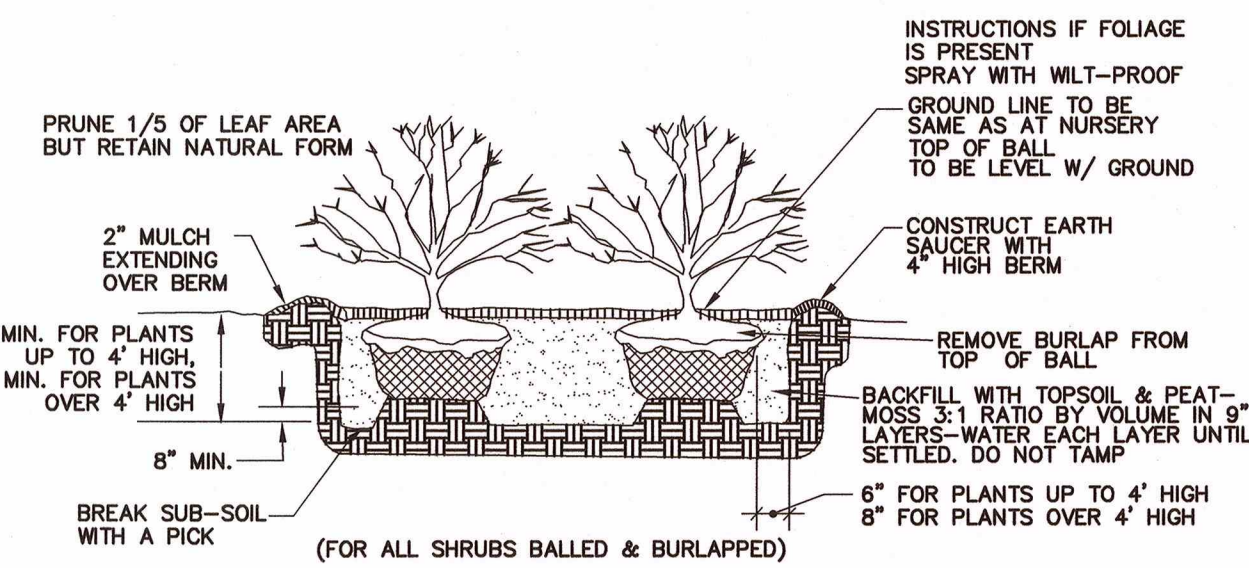
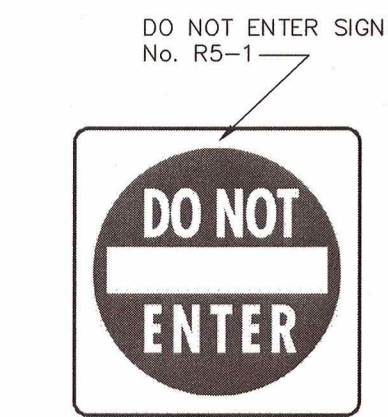
ON SITE STOP SIGN DETAIL

N.T.S.

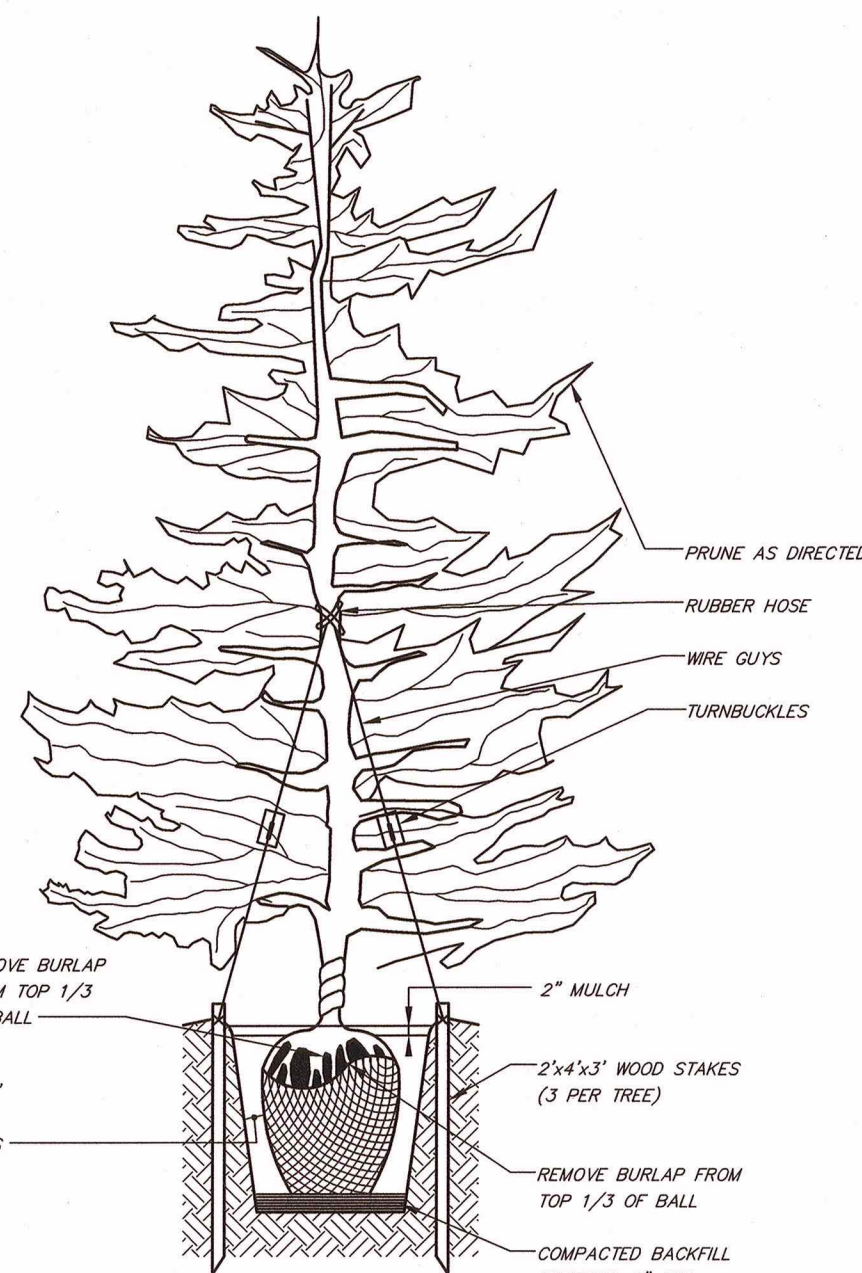


NOTES

1. ALL ASSEMBLY HARDWARE TO BE CAST ALUMINUM WITH ALUMINUM BOLTS
2. THIS DETAIL IS SUITABLE FOR ON SITE SIGNAGE ONLY.



SHRUB PLANTING DETAIL



TYPICAL EVERGREEN TREE PLANTING DETAIL

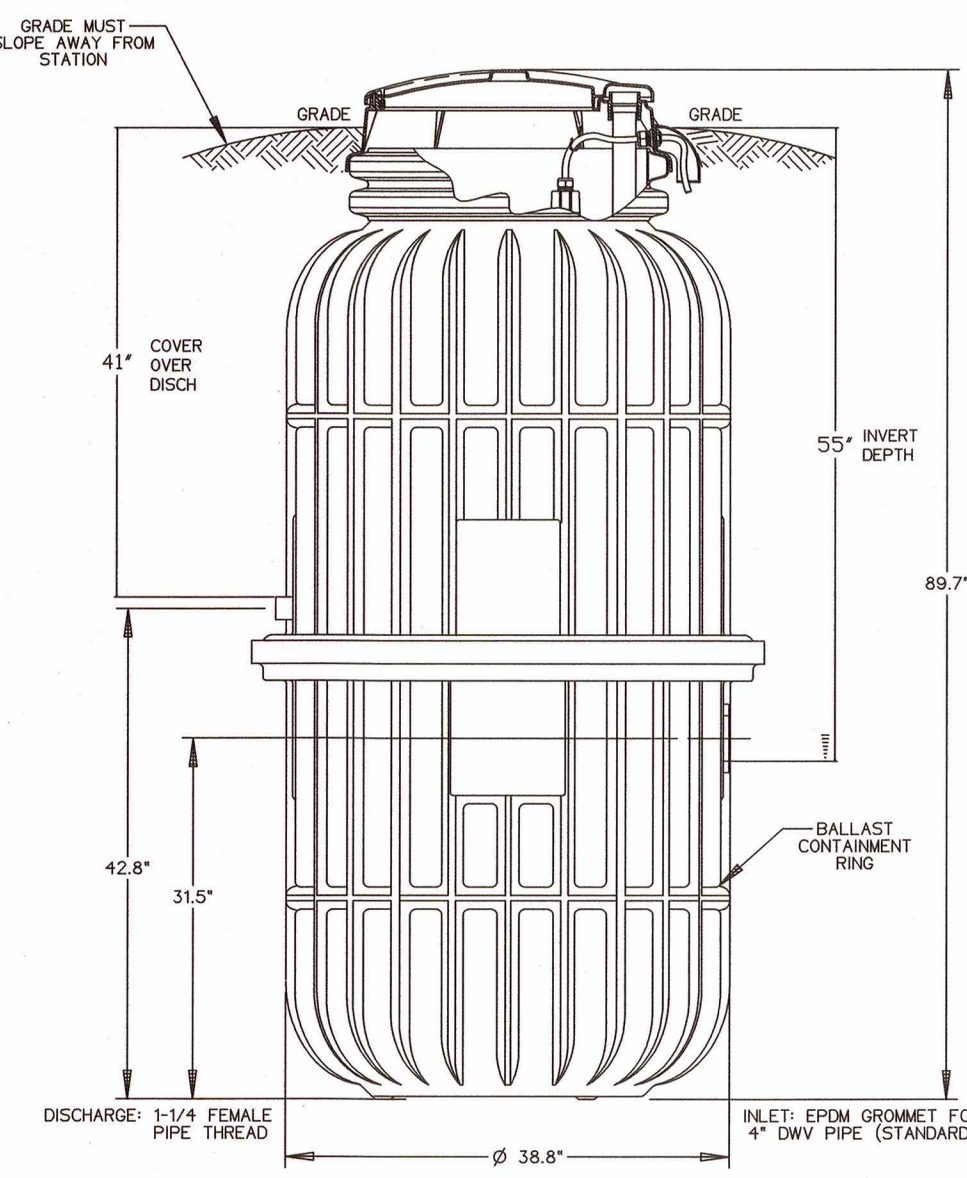
N.T.S.



CPD ENERGY CORP.

OPTIONS: ☒ DH152-93 (HARD WIRED LEVEL CONTROLS)

☐ DR152-93 (WIRELESS LEVEL CONTROLS)



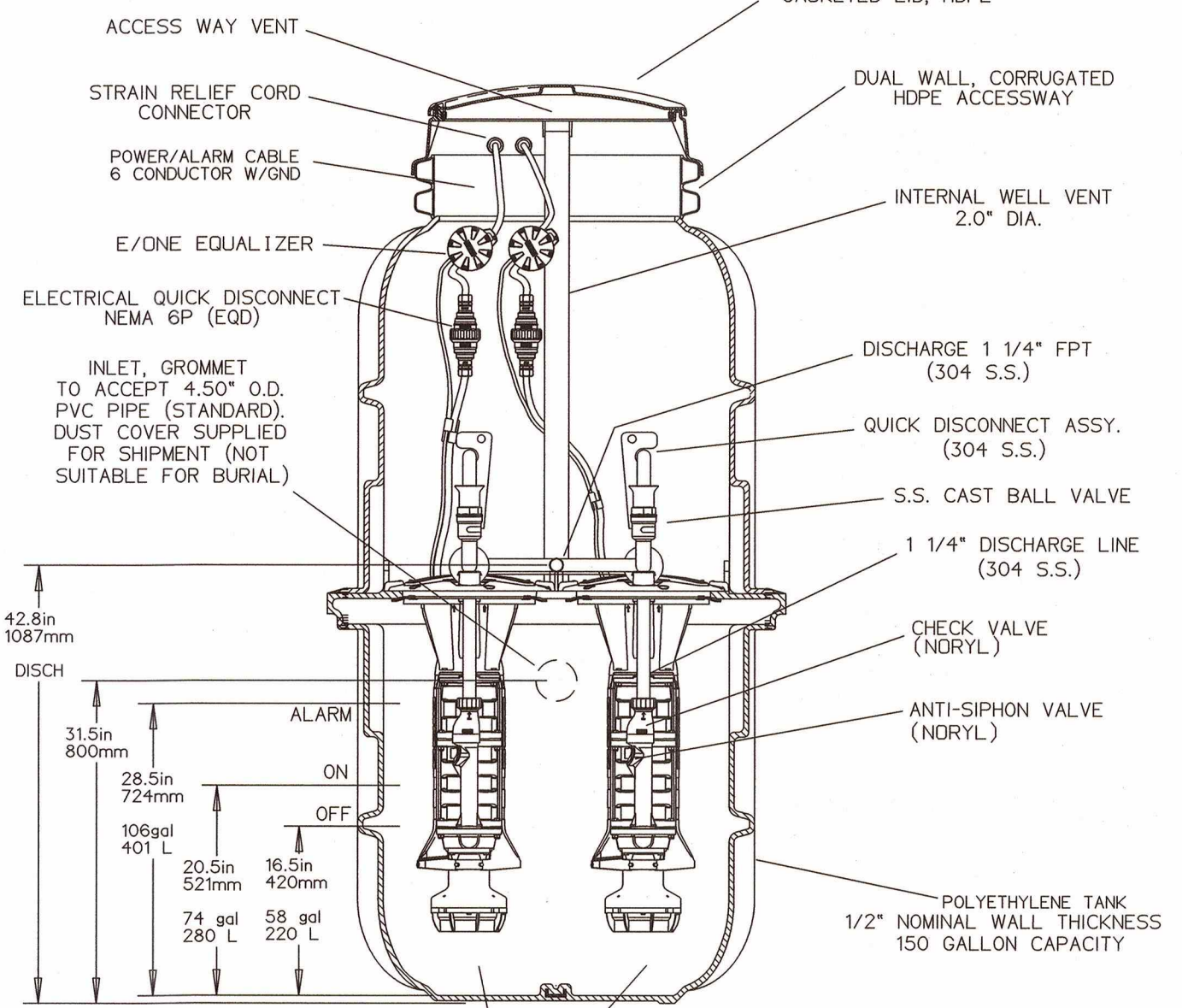
CONCRETE BALLAST MAY BE REQUIRED SEE INSTALLATION INSTRUCTIONS FOR DETAILS

NOTE: DIMENSIONS ARE FOR REF ONLY



OPTIONS: ☒ DH152-93 (HARD WIRED LEVEL CONTROLS)

☐ DR152 (WIRELESS LEVEL CONTROLS)



SEMI-POSITIVE DISPLACEMENT TYPE PUMP EACH DIRECTLY DRIVEN BY A 1 HP MOTOR

CONCRETE BALLAST MAY BE REQUIRED SEE INSTALLATION INSTRUCTIONS FOR DETAILS

NOTE: DIMENSIONS ARE FOR REF ONLY

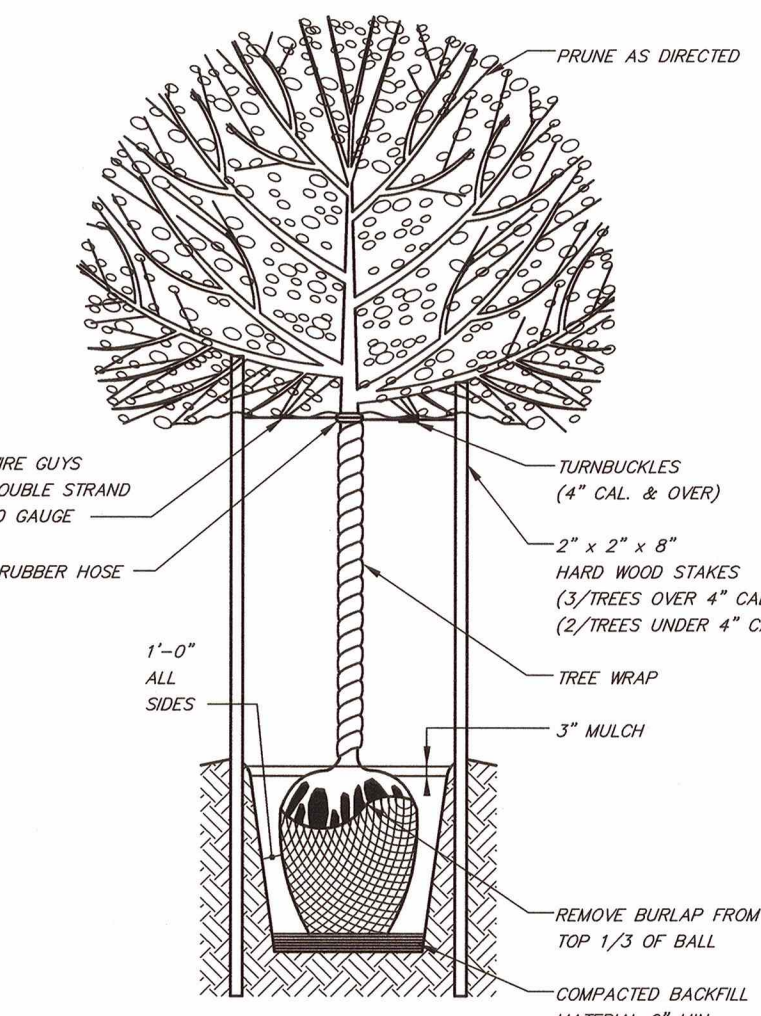
KC	PD	09/30/19	F	
DR BY	CHK'D	DATE	ISSUE	SCALE
eone SEWER SYSTEMS				
MODEL DH152 / DR152 DETAIL SHEET				
NA0052P02				

EONE DUPLEX PUMP STATION DETAIL

N.T.S.

NOTES

1. ALARM PANEL TO BE MANUFACTURED BY EONE, MODEL DUPLEX PROTECT PLUS #NA034P03. ALARM PANEL TO BE MOUNTED ON EXTERIOR WALL NEAREST PUMP STATION.
2. CONTRACTOR TO FOLLOW ALL INSTALLATION PROCEDURES FROM MANUFACTURER.
3. CONTRACTOR SHALL CONFIRM BUILDING ELECTRICAL SERVICE AND VOLTAGE PRIOR TO ORDERING PUMP STATION COMPONENTS TO ENSURE COMPATIBILITY.
4. ALL ELECTRICAL WORK TO CONFORM TO NEC REQUIREMENTS.



TYPICAL DECIDUOUS TREE PLANTING DETAIL

N.T.S.

3	REVISED FOR SUBMISSION	01/08/20	ZS
2	REVISED FOR SUBMISSION	05/22/19	ZS
1	REVISED FOR P.B. SUBMISSION	01/30/2017	THH
REV. No.	DESCRIPTION	DATE	BY

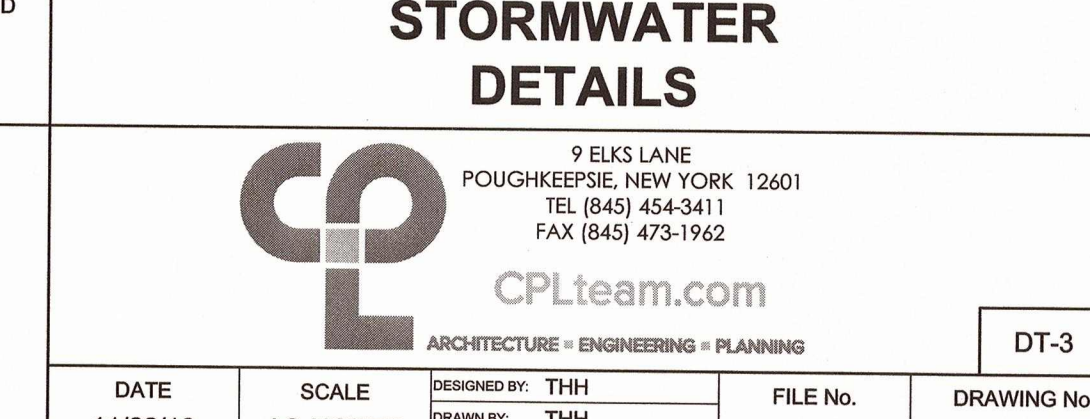
CHESTNUT MART OF MARLBOROUGH
CHESTNUT PETROLEUM DISTRIBUTORS, INC.
TOWN OF MARLBOROUGH
ULSTER COUNTY, NY

SITE DETAILS-2

9 ELKS LANE
POUGHKEEPSIE, NEW YORK 12601
TEL (845) 454-3411
FAX (845) 473-1962
CPLteam.com



DATE	SCALE	DESIGNED BY	FILE No.	DRAWING No.
12/14/16	AS-NOTED	THH	215016	8 of 12
		THH		
		PDS		





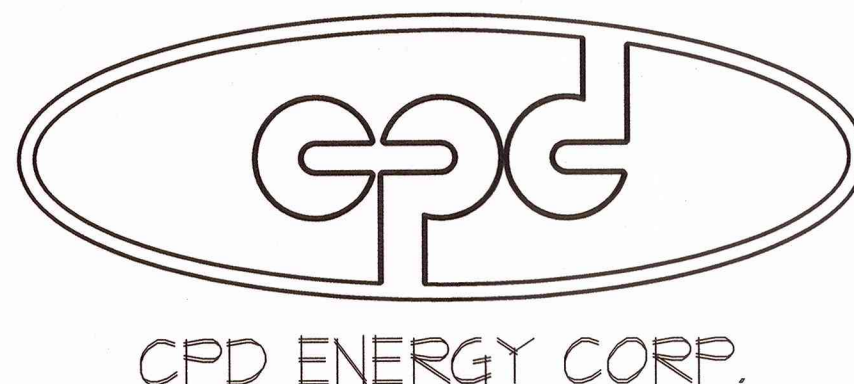
- ALL SOIL EROSION AND SEDIMENT CONTROL DEVICES SHALL BE INSTALLED IN ACCORDANCE WITH THE NEW YORK GUIDELINES FOR EROSION AND SEDIMENT CONTROL (2006), AS PUBLISHED BY THE NEW YORK STATE SOIL AND WATER CONSERVATION SOCIETY AND AS RECOMMENDED BY THE NEW YORK DEPARTMENT OF AGRICULTURE - SOIL CONSERVATION SERVICE. (REFERRED TO IN REMAINING TEXT AS "THE NEW YORK GUIDELINES").
- IF THE SEASON PREVENTS THE ESTABLISHMENT OF A TEMPORARY COVER, THE DISTURBED AREAS SHALL BE MULCHED WITH STRAW OR EQUIVALENT MATERIAL. THE SEEDING SHALL BE DONE IN ACCORDANCE WITH THE NEW YORK GUIDELINES, AS FOLLOWS:
 - A) SEED: ANNUAL RYE GRASS APPLIED AT A RATE OF 20 LBS/ACRE OTHER SELECT MIXTURE AS DESCRIBED IN THE NEW YORK GUIDELINES.
- IF: SPRING SEEDING OR EARLY FALL SEED WITH RYE GRASS (ANNUAL OR PERENNIAL) AT 30 LBS. PER ACRE.
- IF: LATE SPRING OR EARLY WINTER SEED WITH CERTIFIED "ARUGOSTO" WINTER RYE, AT 100 LBS. (CEREAL RYE) PER ACRE.
 - B) MULCH: OLD HAY OR SMALL GRAIN STRAW APPLIED AT A RATE OF NINETY (90) TONS PER ONE HUNDRED THOUSAND SQUARE FT. OR TWO TONS PER ACRE. TO BE APPLIED AND ANCHORED ACCORDING TO THE NEW YORK GUIDELINES. WOODFIBER HYDROMULCH OR OTHER SPRAYABLE PRODUCTS APPROVED FOR EROSION CONTROL (NYLON WEB OR MESH) MAY BE USED IN ACCORDANCE WITH MANUFACTURERS SPECIFICATIONS.
 - C) IN AREAS OF SLOPES STEEPER THAN ONE ON TWO, JUTE MATTING SHALL BE USED TO STABILIZE SEEDED AND/OR PLANTED AREAS. JUTE MATTING SHALL BE INSTALLED AND ANCHORED IN ACCORDANCE WITH THE NEW YORK GUIDELINES
- ANY GRADED AREAS NOT SUBJECT TO FURTHER DISTURBANCE OR CONSTRUCTION TRAFFIC SHALL, WITHIN FIVE (5) DAYS, BE COVERED WITHIN PERMANENT VEGETATIVE COVERINGS IN COMBINATION WITH A SUITABLE MULCH AS FOLLOWS:
 - A) STEEP OR EROSION SLOPES GREATER THAN 2:1 (H:V) REFER TO PERMANENT CRITICAL AREA PLANTING NOTES.
 - B) RECREATIONAL AREAS AND LAWN REFER TO RECREATIONAL AREA IMPROVEMENT NOTES.
- SLOPES STEEPER THAN ONE ON THREE SHALL BE STABILIZED IMMEDIATELY AFTER GRADING.
- PAVED ROADWAYS SHALL BE KEPT CLEAR AT ALL TIMES.
- THE SITE SHALL AT ALL TIMES BE GRADED AND MAINTAIN SUCH THAT ALL STORM WATER RUNOFF IS DIVERTED TO SOIL EROSION OR SEDIMENT CONTROL FACILITIES. EXCEPT FOR MINOR AREAS OF TEMPORARY INADEQUATE AREAS, ALL GRADE AREA SHALL BE DIRECTED THROUGH ONE OF THE SEDIMENTS BARRIERS. DIVERSION SWALES MAY BE USED TO DIRECT DRAINAGE RUNOFF UNTIL PERMANENT STORM DRAINAGE SYSTEM IS IN PLACE.
- DUST SHALL BE CONTROLLED BY SPRINKLING OR OTHER APPROVED METHODS.
- STOCKPILES SHALL NOT BE LOCATED WITHIN FIFTY FEET (50') OF ROADWAYS OR DRAINAGE FACILITIES. THE BASE OF STOCKPILES SHALL BE PROTECTED BY A SILT FENCE, HAY BALES BARRIER OR COMBINATION OF BOTH.
- SOIL EROSION AND SEDIMENT CONTROL MEASURES SHALL BE INSPECTED AND MAINTAIN BY THE CONTRACTOR ON A DAILY BASIS TO ENSURE THAT TEMPORARY AND PERMANENT DITCHES, PIPES AND STRUCTURES ARE CLEAR OF DEBRIS, THAT EMBANKMENTS AND BERMS ARE NOT BREACHED, AND THAT ALL BARRIERS ARE INTACT.
- MANDATORY STORMWATER INSPECTIONS SHALL BE PERFORMED WEEKLY. INSPECTIONS ARE TO BE PERFORMED BY A TRAINED INSPECTOR.
- ALL SOIL EROSION AND SEDIMENTATION CONTROL MEASURES SHALL BE MAINTAINED BY THE CONTRACTOR UNTIL FINAL ACCEPTANCE OF THE SITE WORK BY THE OWNER. UPON CERTIFICATION OF THE FINAL ON SITE ACCEPTANCE, THE CONTRACTOR SHALL BE RESPONSIBLE FOR THE CONTINUED MAINTENANCE OR PERMANENT SOIL EROSION AND SEDIMENTATION CONTROL MEASURES.
- ALL DRAINAGE OUTLETS AND INLETS SHALL BE LINED WITH STONE RIP-RIAP AS SPECIFIED ON THE PLANS AND/OR PER ENGINEER.
- THE CONTRACTOR IS ULTIMATELY RESPONSIBLE FOR IMPLEMENTATION AND MAINTENANCE OF ALL EROSION AND SEDIMENT CONTROL MEASURES.
- CONSTRUCTION SHALL BE DIVIDED INTO FOUR (4) PHASES AS TO LIMIT THE DISTURBANCE TO LESS THAN 5.0 ACRES AT ONE TIME.
- SOILS DISTURBED ON SITE SHALL BE RE-USED AND RETURNED TO THEIR NATURAL PROPERTIES SO AS TO MAINTAIN THE SITE'S NATURAL INTEGRITY. ANY DISTURBED SOILS LEFT EXPOSED SHALL BE TEMPORARILY STABILIZED.

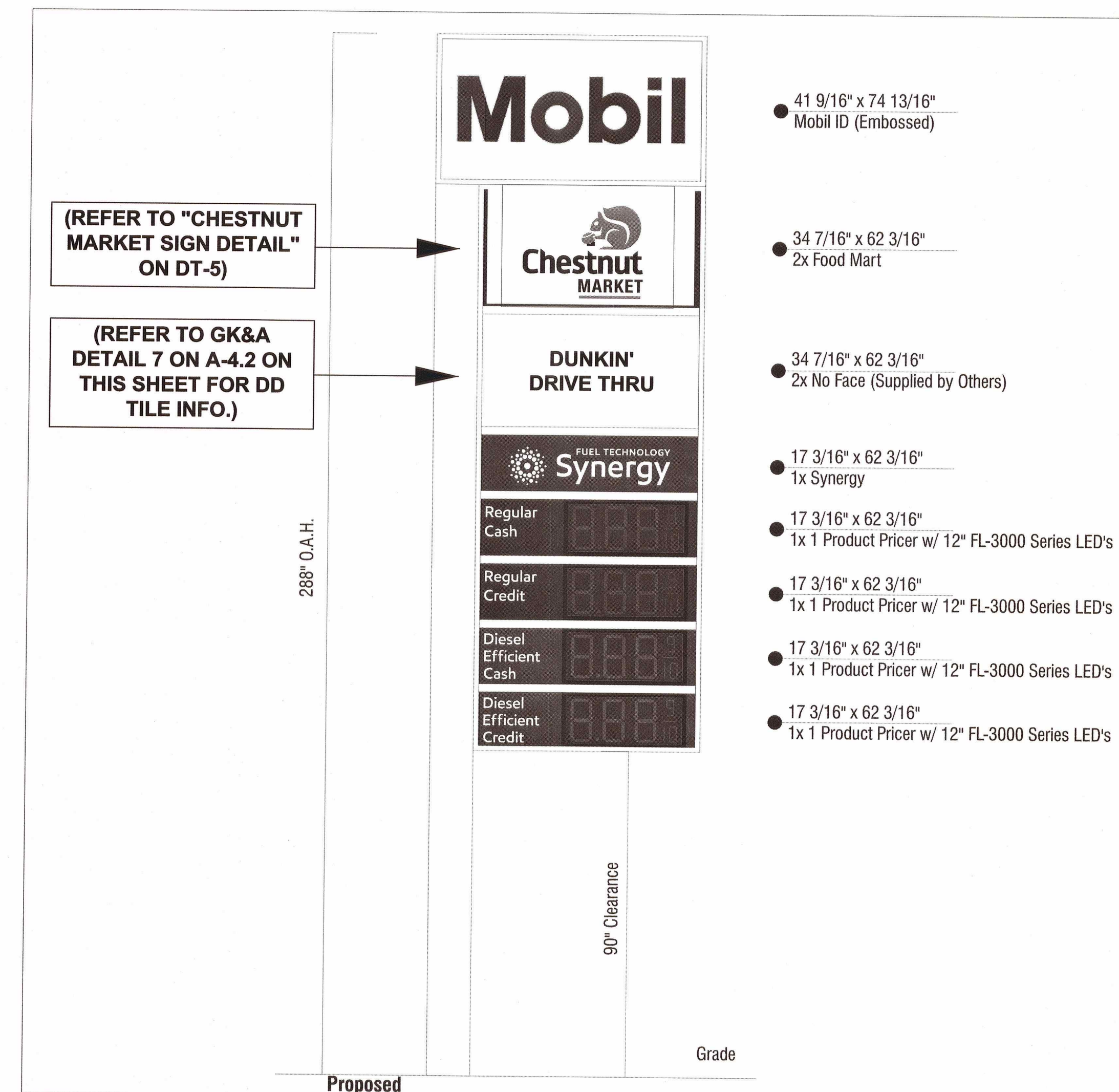
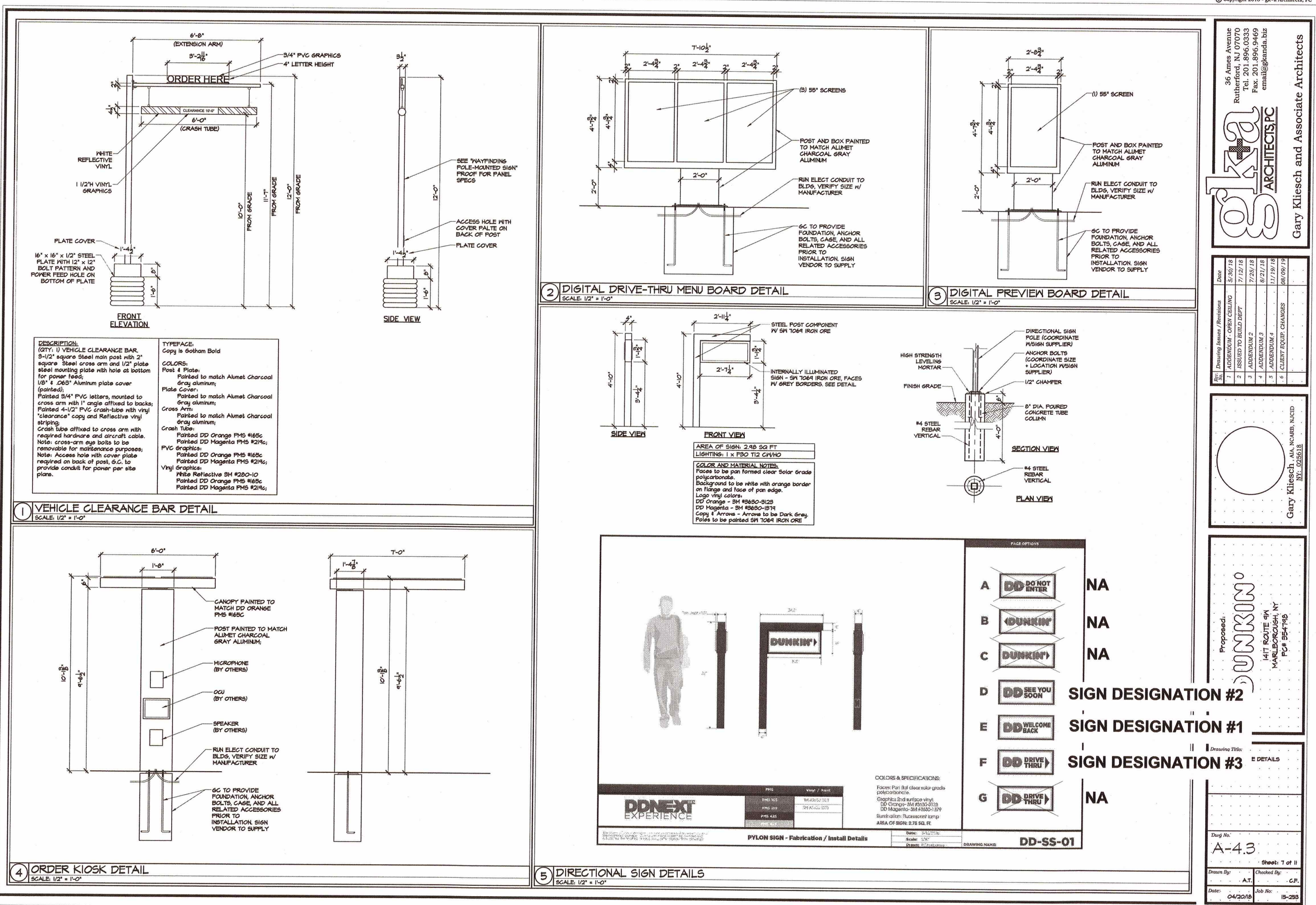
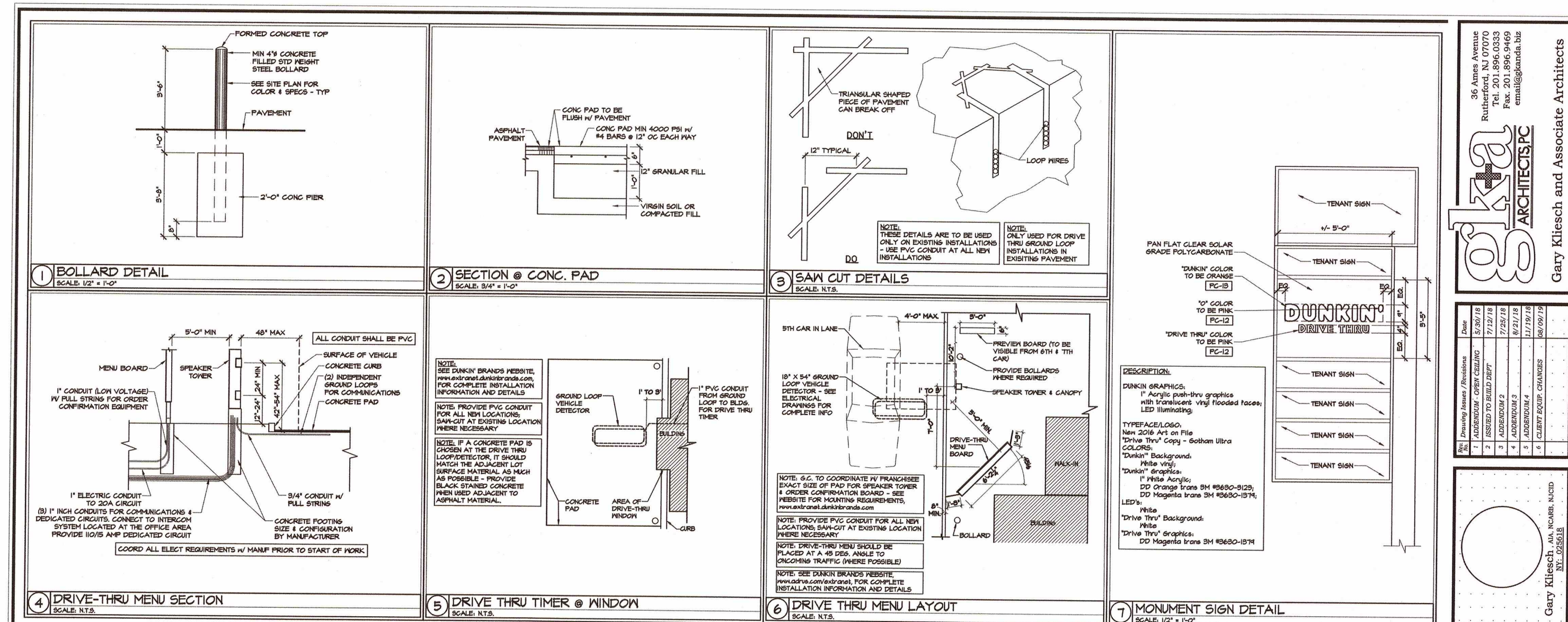


CHESTNUT MART OF MARLBOROUGH
CHESTNUT PETROLEUM DISTRIBUTORS, INC.
TOWN OF MARLBOROUGH ULSTER COUNTY, NY

DT-4

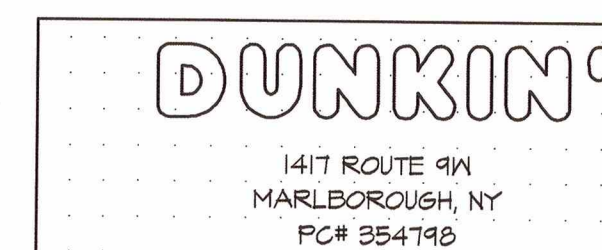
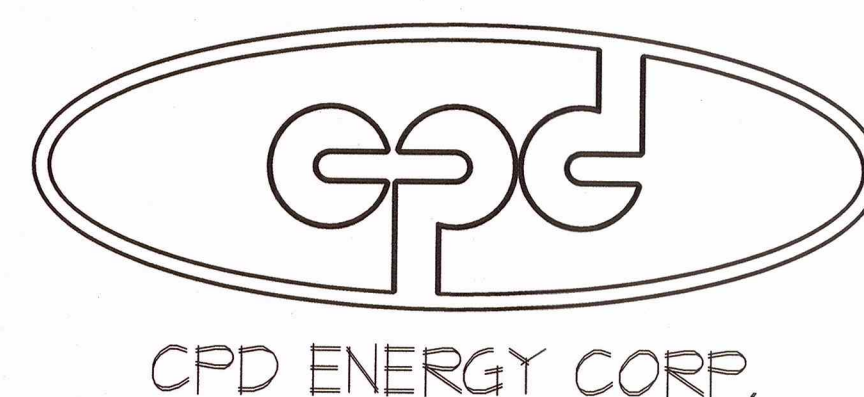
DATE 11/22/16	SCALE AS-NOTED	DESIGNED BY: THH	FILE No. 215016	DRAWING No. 10 of 12
		DRAWN BY: THH		
		CHECKED BY: PDS		





MOBIL AND DUNKIN PYLON DETAIL

N.T.S.



2	REVISED FOR SUBMISSION	01/08/20	ZS
1	REVISED TO CLARIFY SIGN OPTIONS	03/20/2017	THH
REV. No.	DESCRIPTION	DATE	BY
CHESTNUT MART OF MARLBOROUGH CHESTNUT PETROLEUM DISTRIBUTORS, INC. TOWN OF MARLBOROUGH ULSTER COUNTY, NY SITE SIGNAGE DETAILS-2 9 ELKS LANE POUGHKEEPSIE, NEW YORK 12601 TEL (845) 454-3411 FAX (845) 475-1962 CPTeam.com ARCHITECTURE • ENGINEERING • PLANNING			
DATE	SCALE	DESIGNED BY	FILE No.
12/14/16	AS-NOTED	THH	215016
		DRAWN BY	DRAWING No.
		THH	12 of 12
		CHECKED BY	
		PDS	



1251 Washington St Suite 245 Griffin, GA 30204
262.377.2715 - Phone 262.377.3193 - Fax

Other Office Locations:
Los Angeles - Oceanside - Las Vegas
Tacoma - Kansas City - Willowbrook
Milwaukee - Eufess - Houston
San Antonio - Atlanta
Tampa - Daytona Beach

Building Quality Signage For American Business

Revisions:

R1: Changed clearance height...01.06.20

Account Rep:

Project Manager: **peggy DEHECK**

Drawn By: **m c**

Project / Location:

ExxonMobil
1417 Route 9W
Marlboro, NY 12542
Type B 9 Panel

This original drawing is provided as part of a
planned project and is not to be exhibited, copied or
reproduced without the written permission of
Federal Health Sign Company LLC or its
authorized agent.

Job Number: **Ex199120.E**

File Name:

Date: **01.03.20**

Sheet Number: **1 of 1**

Design Number:

Approved ☐ Approved w/changes ☐

Signature Date