



# Cluett-Schantz Park Gazebo Eagle Scout Project

Joseph Desole, Troop 72

# First Proposed Location



- Located between front playground and basketball court
- Large open area with minimal grading

# Alternate Locations



- Located near front pond
- Open area with minimal grading



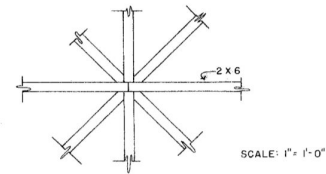
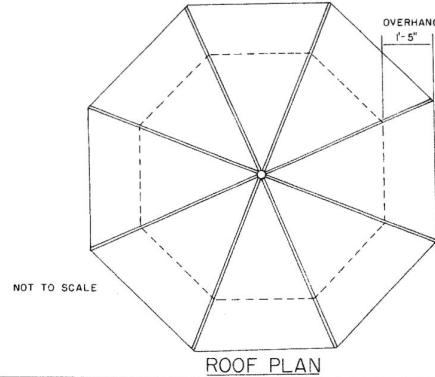
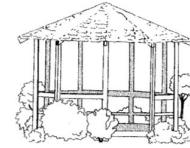
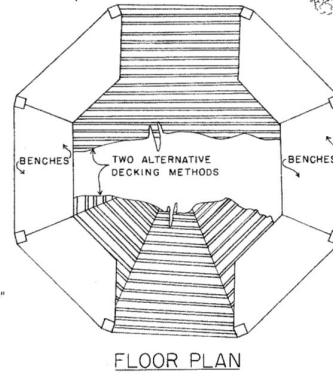
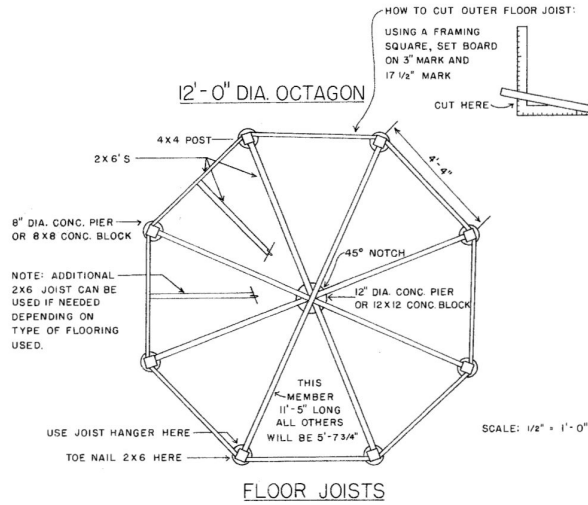
# Alternate Locations



- Also located near front pond

# Map of Cluett-Schantz Park and Proposed Locations

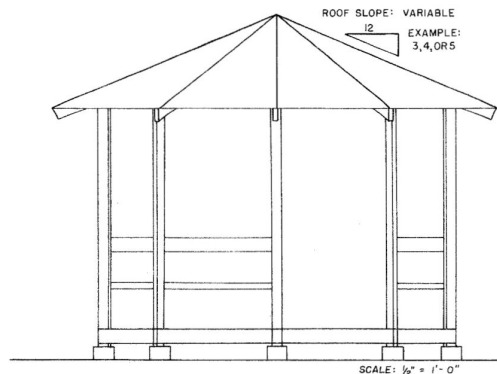




RAFTER JOINING  
DETAIL

OCTAGONAL GAZEBO	
ENGINEER COVINGTON & DOUGHTY	SCALE AS NOTED
DRAWN BY K.E.M.	SHEET 1 OF 2
TRACED BY E.L.N.	DATE 3-10-85 NO. 26-4

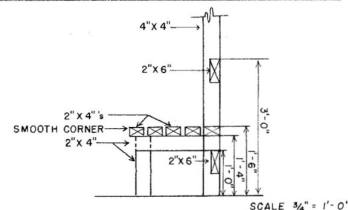
NOTE:  
IF STEPS ARE NEEDED, USE EITHER STONE  
OR BRICK SEPERATED FROM FLOOR. AVOID  
WOODEN STEPS ATTACHED TO FLOOR TO  
MINIMIZE TERMITE INFESTATION.



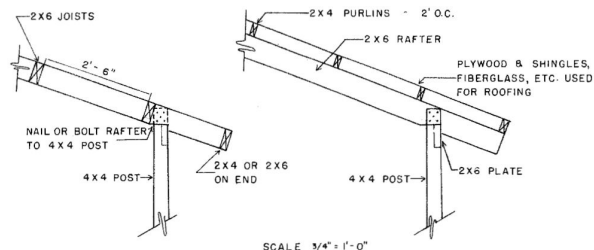
ELEVATION

## BILL OF MATERIALS

- 8- 8" DIA. X 18" DEPTH CONCRETE PIERS
- 1- 12" DIA. X 18" DEPTH CONCRETE PIERS
- (TOTAL - 1/2 CU. YD. OR 10-60 LB. SACKS PRE MIX)
- 8- 4"x4" POST ANCHORS
- 8- 4"x4"x8' POSTS
- 4- 2"x6"x12' FOR FLOOR JOISTS
- 4- 2"x6"x10' FOR FLOOR JOISTS
- 8 SHEETS - 3/8" x 4"x8' PLYWOOD SHEATHING } FLOOR OPTIONS
- 300 LINEAR FEET 2"x4" DECKING
- 6- 2"x6"x10' FOR BENCH
- 14- 2"x4"x12' FOR BENCH
- 4- 2"x6"x12' FOR PLATES
- 8- 2"x4"x8' FOR PURLINS
- 8 SHEETS - 3/8" x 4"x8' PLYWOOD SHEATHING } ROOF OPTIONS
- 176 FT<sup>2</sup> ROOFING MATERIAL
- 8- 2"x6"x8' FOR RAFTERS



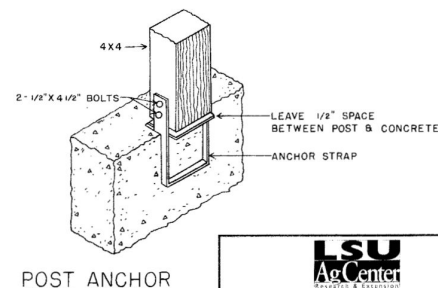
BENCH CROSS SECTION



WITHOUT PURLINS

WITH PURLINS

ALTERNATE ROOFING METHODS



POST ANCHOR



## OCTAGONAL GAZEBO

ENGINEER DOVINGTON/DOUGHTY SCALE AS NOTED  
DRAWN BY K.E.M. SHEET 2 OF 2  
TRACED BY E.L.N. DATE 3-10-83 NO. 26-4