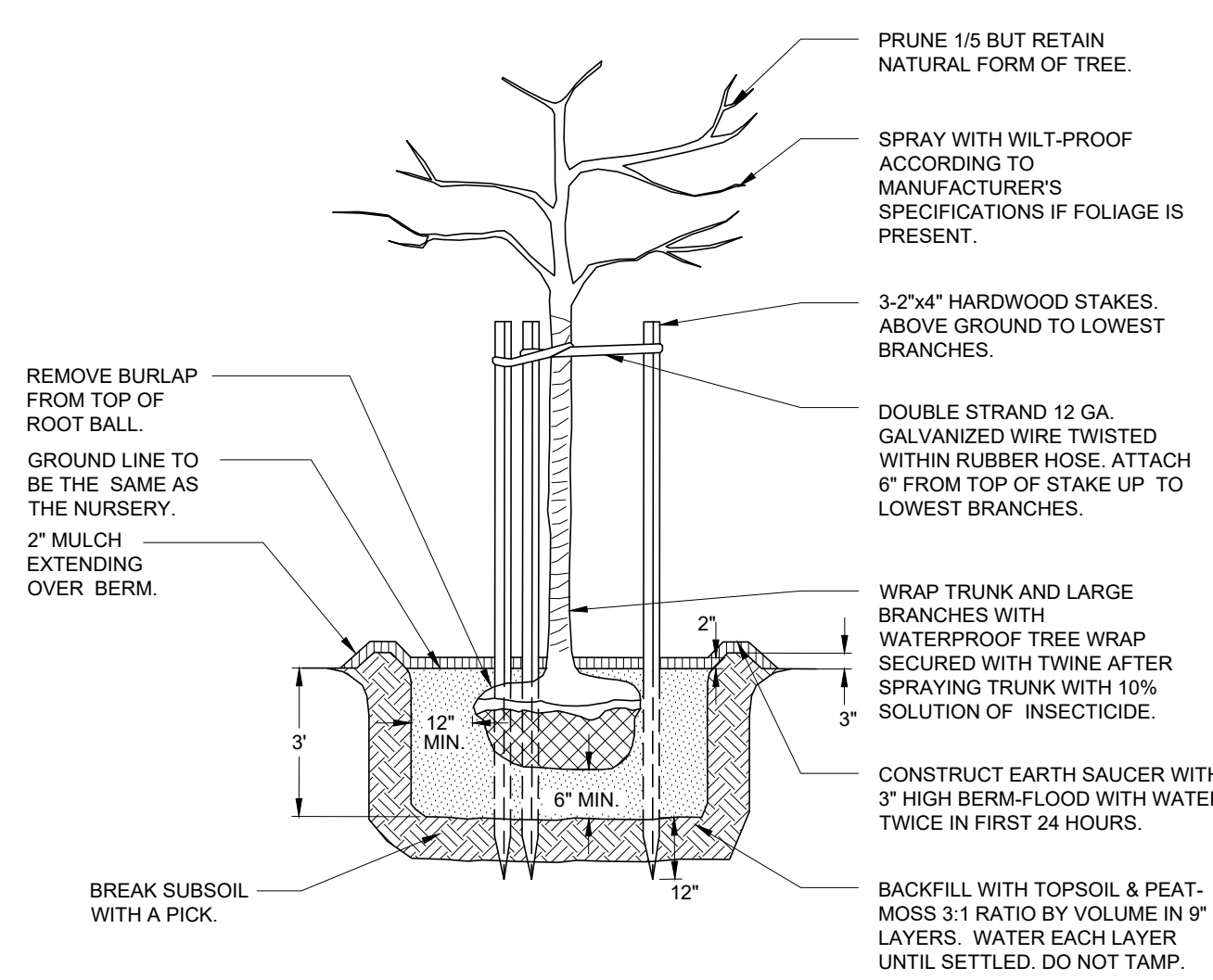
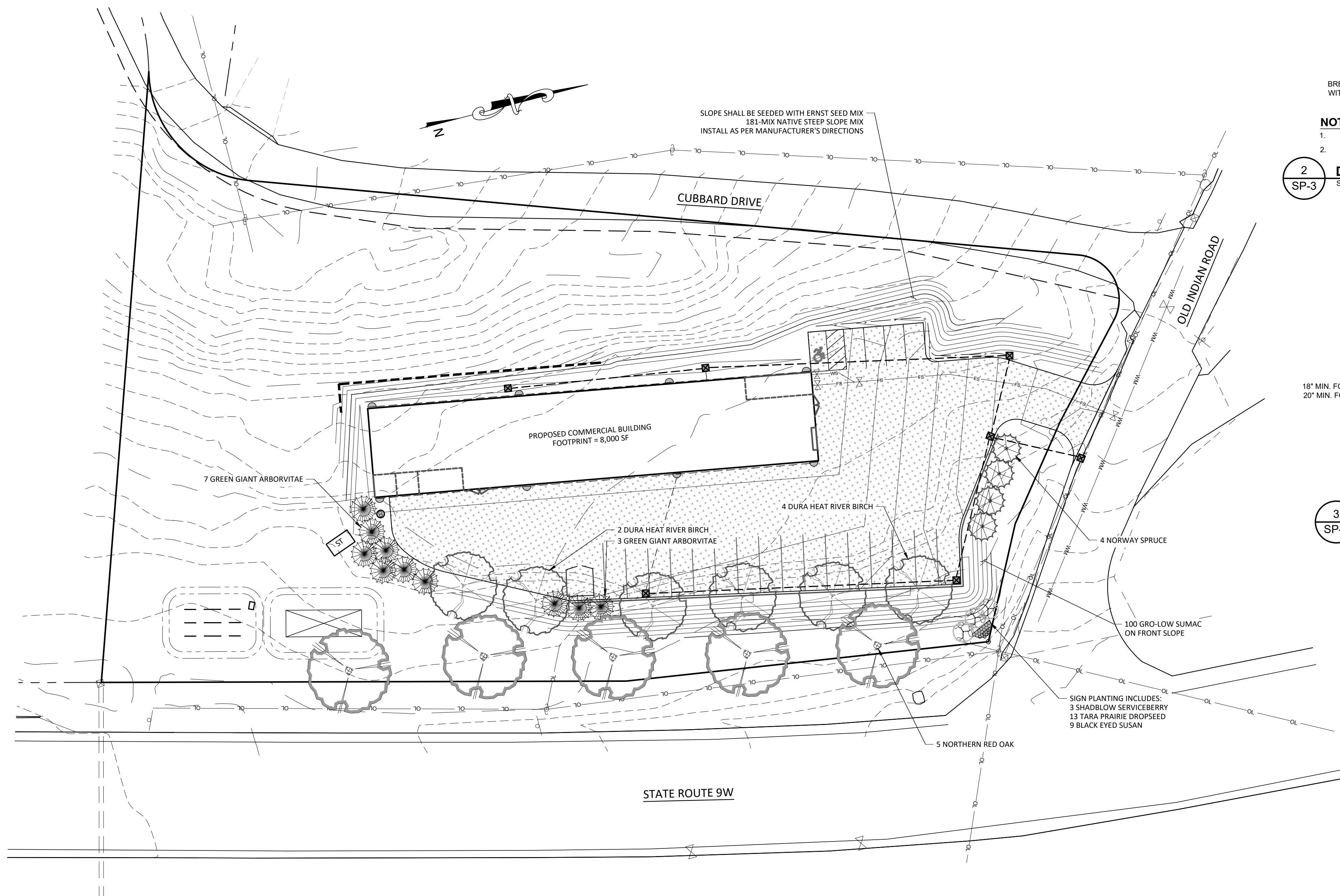


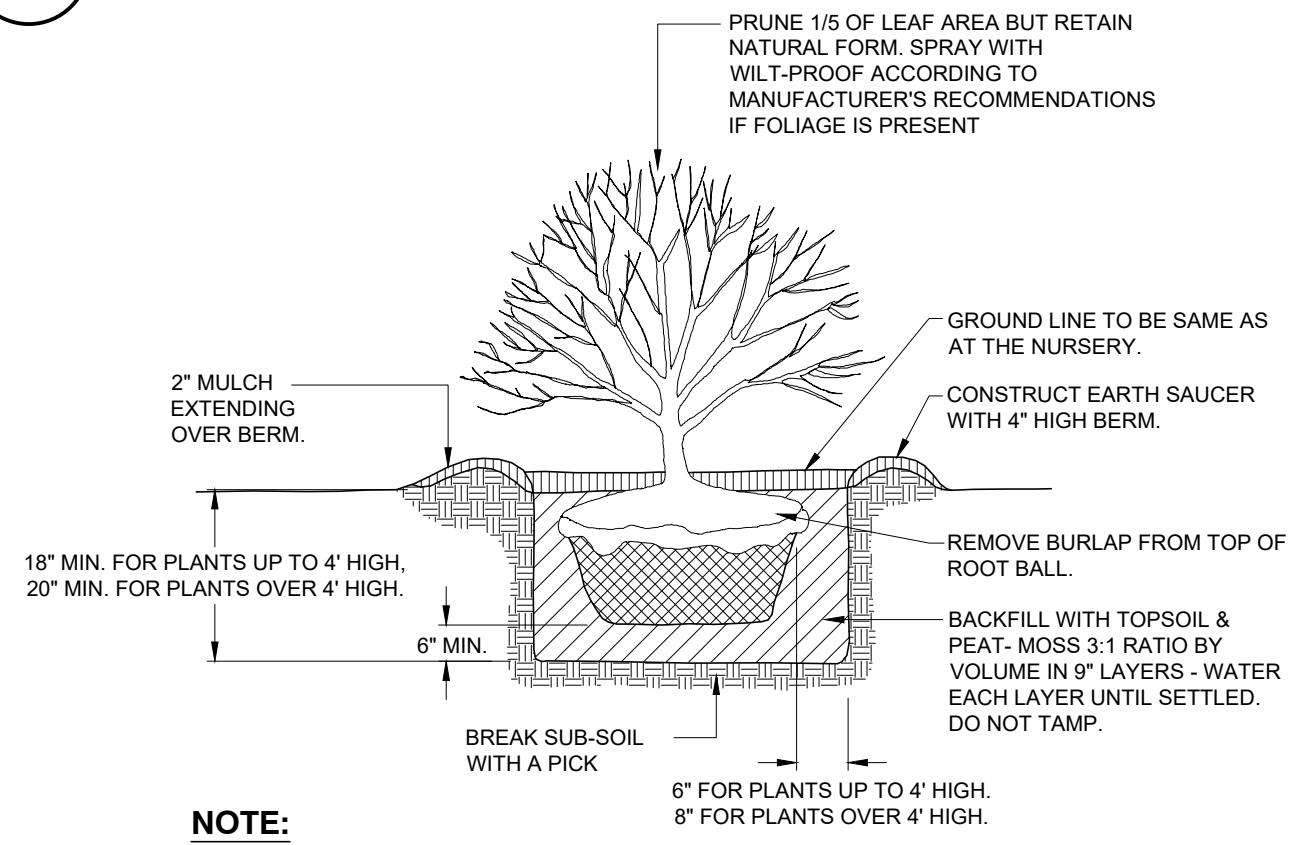
PLANTING SCHEDULE						
NUMBER	COMMON NAME	BOTANICAL NAME	SIZE	ROOT	NOTES	
5	NORTHERN RED OAK	QUERCUS RUBRA	3.5" CALIPER	B&B		
3	SERVICEBERRY	AMELANCHIER CANADENSIS	6-7" HEIGHT	B&B	MULTI-STEMMED PLANT	
3	NORWAY SPRUCE	PICEA ABIES	6-7" HEIGHT	B&B		
6	DURA HEAT RIVER BIRCH	BETULA NIGRA 'DURA HEAT'	6-7" HEIGHT	B&B	MULTI-STEMMED PLANT	
100	GRO-LOW SUMAC	RHUS AROMATICA	15-18" HEIGHT	CONTAINER		
10	GREEN GIANT ARBORVITAE	THUJA STANDISHII X PLICATA 'GREEN GIANT'	6-7" HEIGHT	B&B		
13	PRAIRIE DROPSIED TARA	SPOROBOLUS HETEREPLEPS 'TARA'	1 GALLON	CONTAINER		
9	BLACK EYED SUSAN	RUDBECKIA FULGIDA 'GOLDSTRUM'	1 GALLON	CONTAINER		



- NOTES:**
1. TREES LESS THAN 3" CALIPER SHALL BE STAKED
 2. TREES 3" CALIPER AND UP SHALL BE GUYED.

2 DECIDUOUS TREE PLANTING / STAKING DETAIL

SCALE: N.T.S.

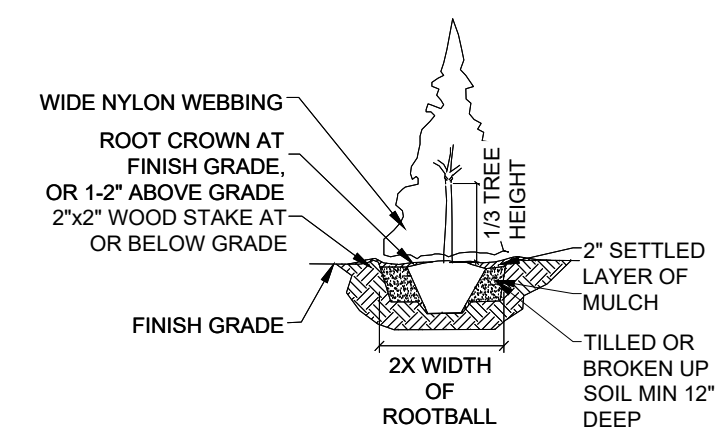


NOTE:

ALL SHRUBS SHALL BE BALLED AND BURLAPPED.

3 SHRUB PLANTING DETAIL

SCALE: N.T.S.



NOTES:.

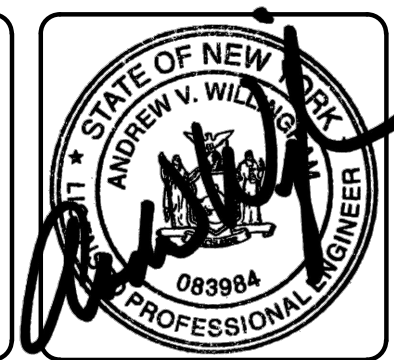
3. ALL PLANT MATERIALS SHALL BE IN ACCORDANCE WITH THE AMERICAN STANDARDS FOR NURSERY STOCK (ANSI Z60-1.2004), PLANT ACCORDING TO ANSI A300 PART 6
4. THE PLANTING HOLE HAVE A MINIMUM OF 2x WIDTH OF ROOTBALL FOR AT LEAST THE FIRST 12 INCHES OF DEPTH BELOW 12 INCHES, DIG HOLE WIDE ENOUGH TO PERMIT ADJUSTING. DO NOT DIG THE HOLE DEEPER THAN ROOT BALL DEPTH.
5. SCARIFY THE SUBGRADE AND SIDES OF THE PLANTING HOLE WHEN PLANTING IN CLAY SOILS (MORE THAN 15% CLAY).
6. LIFT AND SET THE TREE BY ROOT BALL ONLY. DO NOT LIFT USING THE TREE TRUNK AND DO NOT USE TREE TRUNK AS A LEVER.
7. SET THE TOP OF THE ROOT BALL LEVEL WITH THE SOIL SURFACE OR SLIGHTLY HIGHER IF THE SOIL IS PRONE TO SETTLING.
8. AFTER THE TREE IS SET IN PLACE, REMOVE BURLAP, WIRE AND STRAPS FROM AT LEAST THE UPPER 1/3 OF THE ROOTBALL.
9. BACKFILL WITH EXISTING SOIL THAT HAS BEEN WELL-TILTED OR BROKEN UP.
10. USE THREE 2" x 2" WOOD STAKES DRIVEN INTO UNTURBULRED SOIL A MINIMUM OF 16 INCHES, SPACE STAKES EQUALLY AROUND THE TREE.
11. ATTACH 3/4" NYLON WEBBING TO CONNECT THE TREE TO STAKES. ATTACH WEBBING AT 1/3 THE TREE HEIGHT.
12. APPLY A 2-3" (SETTLED) DEPTH OF BARK MULCH TO THE PLANTING SURFACE. LEAVE A 2" SPACE AROUND THE TRUNK FOR AIR CIRCULATION.
13. PRUNING SHALL BE LIMITED TO DEAD, DISEASED, OR BROKEN LIMBS ONLY AND SHALL BE IN ACCORDANCE WITH ANSI A300 SPECIFICATIONS.
12. REMOVE ANY TRUNK WRAP REMAINING AT TIME OF PLANTING. NO WRAPS SHALL BE PLACED ON TRUNK.

4 EVERGREEN TREE PLANTING

SCALE: N.T.

1 PROPOSED LANDSCAPE PLAN

SP-3 SCALE: 1" = 30'



ALL RIGHTS RESERVED. COPY OR REPRODUCTION OF THIS PLAN OR ANY PORTION THEREOF, IS PROHIBITED WITHOUT THE WRITTEN PERMISSION OF THE DESIGN ENGINEER, SURVEYOR, OR ARCHITECT.

UNDER ARTICLE 145 (ENGINEERING), SECTION 7209 (2) OF THE NEW YORK STATE EDUCATION LAW, IT IS UNLAWFUL FOR ANY PERSON TO ALTER ANY ITEM ON THIS DRAWING, UNLESS ACTING UNDER THE DIRECTION OF A LICENSED PROFESSIONAL ENGINEER OR LICENSED SURVEYOR. IF ANY ITEM IS ALTERED, THE ALTERING ENGINEER AND/OR SURVEYOR SHALL AFFIX THE ITEM WITH A SEAL AND THE NOTATION "ALTERED BY" FOLLOWED BY THE SIGNATURE AND THE DATE OF SUCH ALTERATION, AND A SPECIFIC DESCRIPTION OF THE ALTERATION.



183 Main Street
New Paltz, New York 12561
T 845.255.0210 F 845.256.8110
www.willinghamengineering.com

[illegible]

LANDSCAPING PLAN

KEEBOMED INC

ROUTE 9W

TOWN OF MARLBOROUGH, NEW YORK

DRAWN BY	CHECKED BY
AVW	
DATE	SCALE
2/06/23	1" = 30'
PROJECT NO.	
22079	
SHEET NO.	
SP-3	