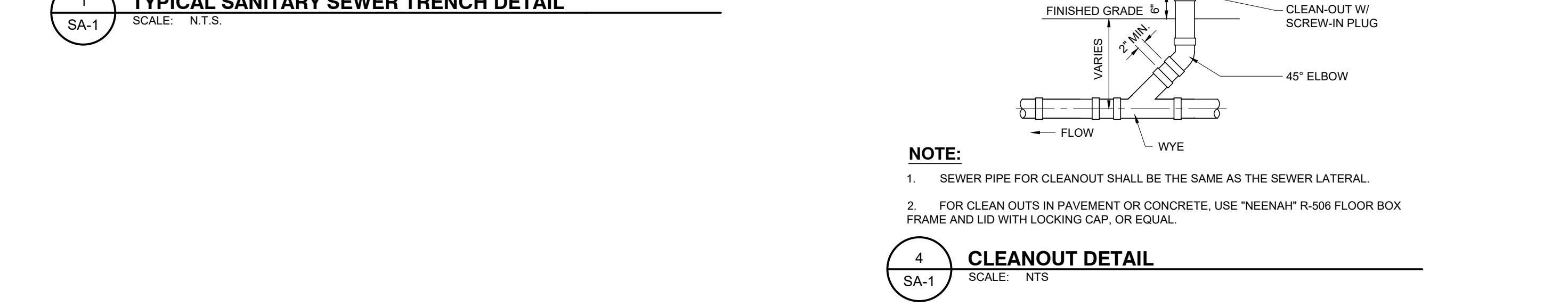


1 TYPICAL SANITARY SEWER TRENCH DETAIL
SCALE: N.T.S.

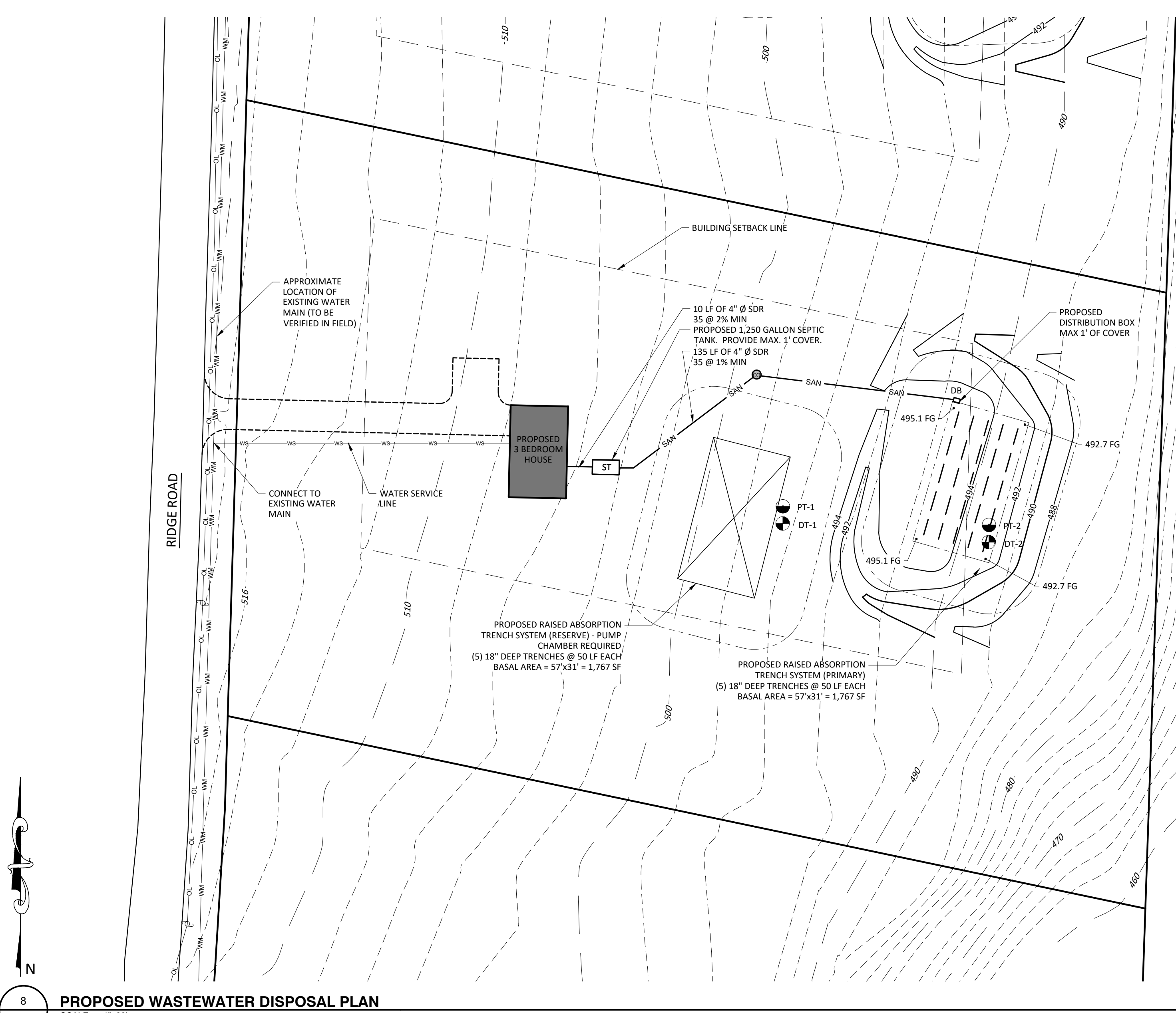
2 PRECAST DISTRIBUTION BOX DETAIL - MODEL NO. DB-9/8
SCALE: N.T.S.



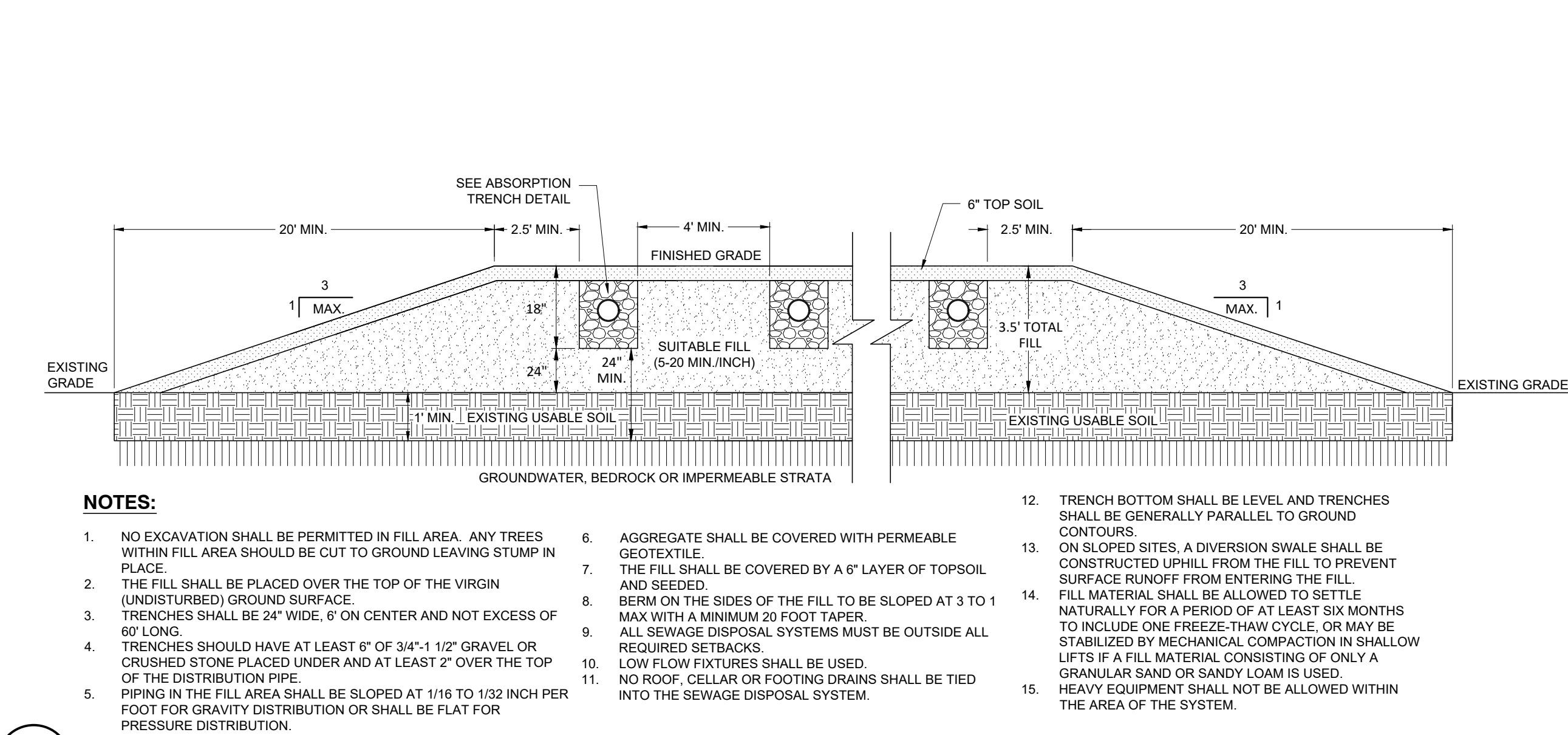
4 CLEANOUT DETAIL
SCALE: N.T.S.



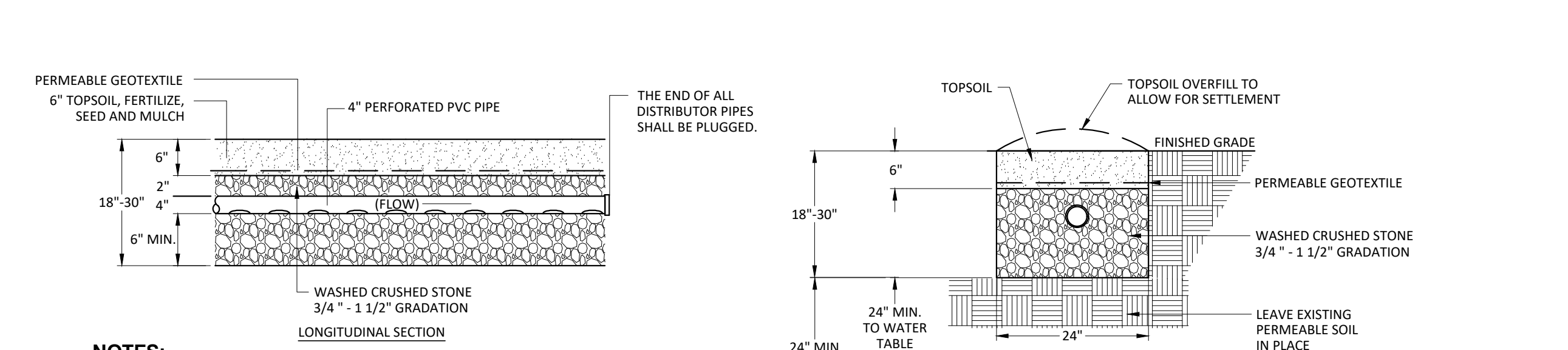
5 ABSORPTION TRENCH DETAIL
SCALE: N.T.S.



8 PROPOSED WASTEWATER DISPOSAL PLAN
SCALE: 1"=30'



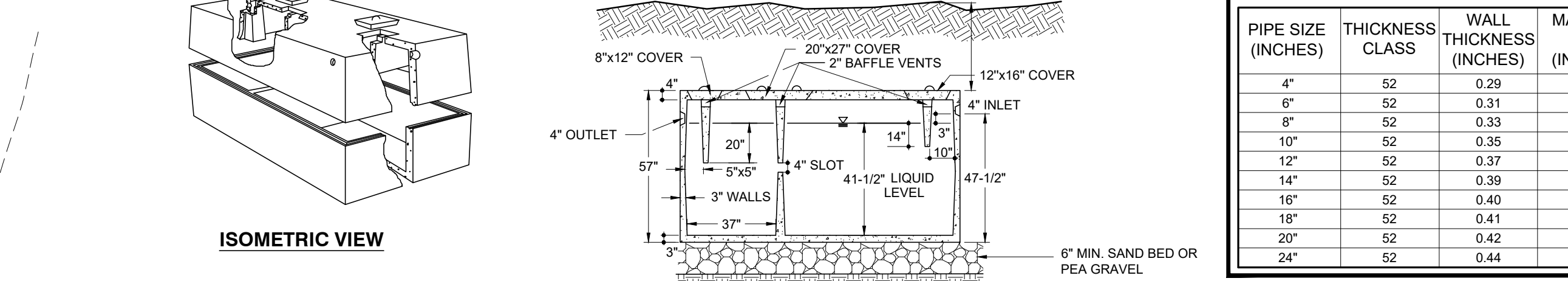
3 RAISED SYSTEM SECTION DETAIL
SCALE: N.T.S.



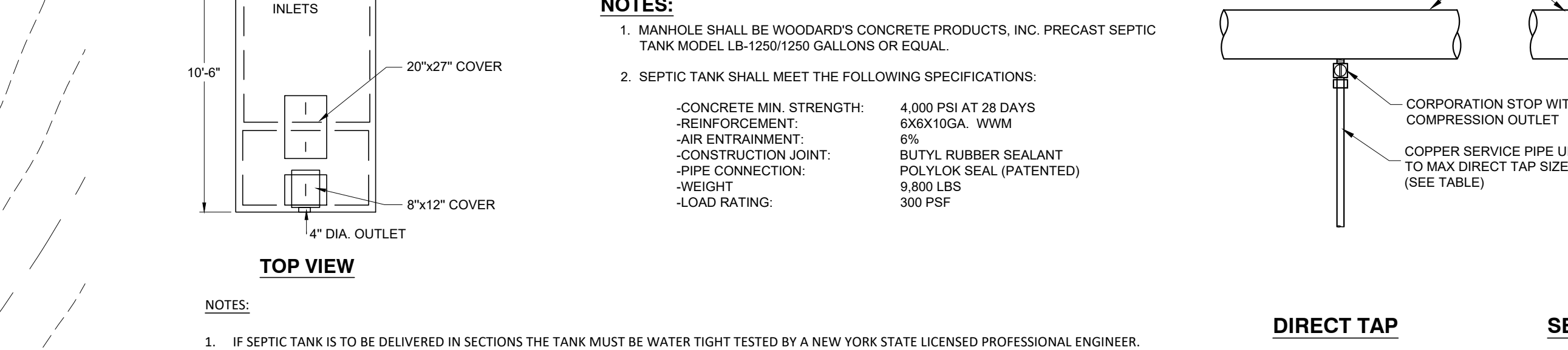
5 ABSORPTION TRENCH DETAIL
SCALE: N.T.S.



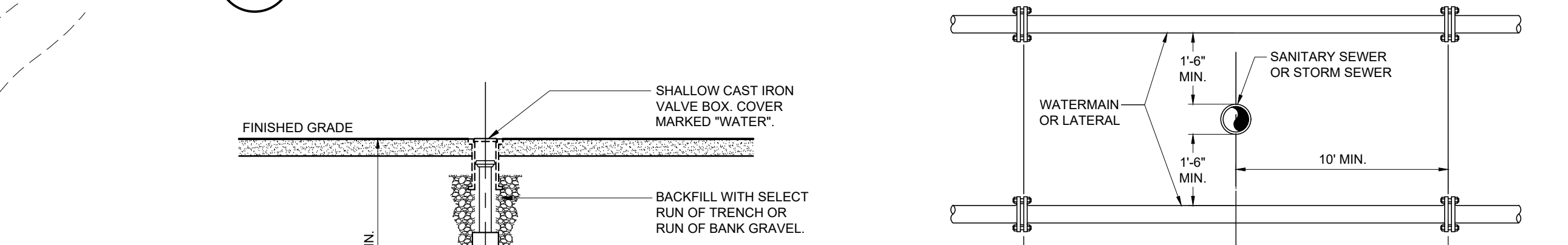
6 PRECAST SEPTIC TANK DETAIL - 1,250 GALLON LOW PROFILE
SCALE: N.T.S.



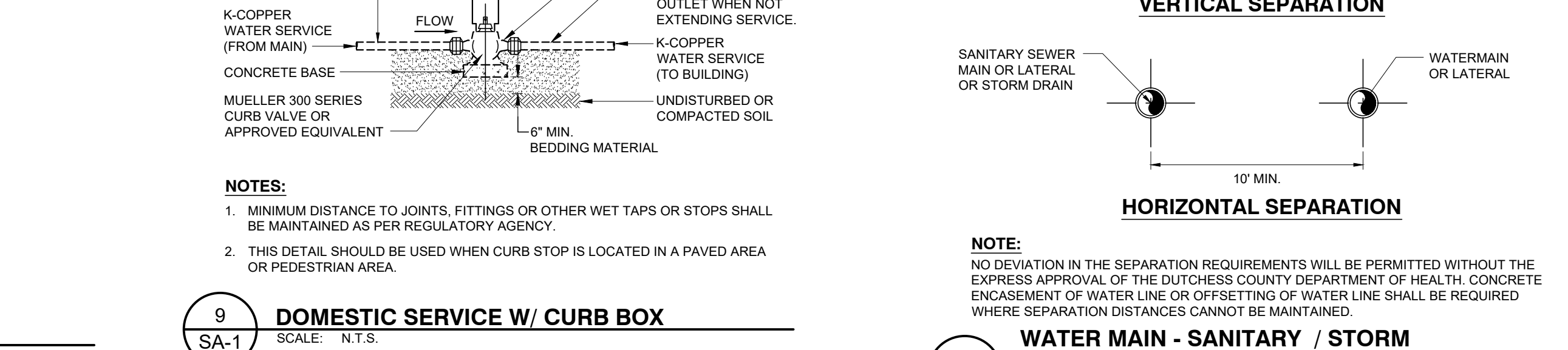
7 TYPICAL COPPER WATER SERVICE TAPS
SCALE: N.T.S.



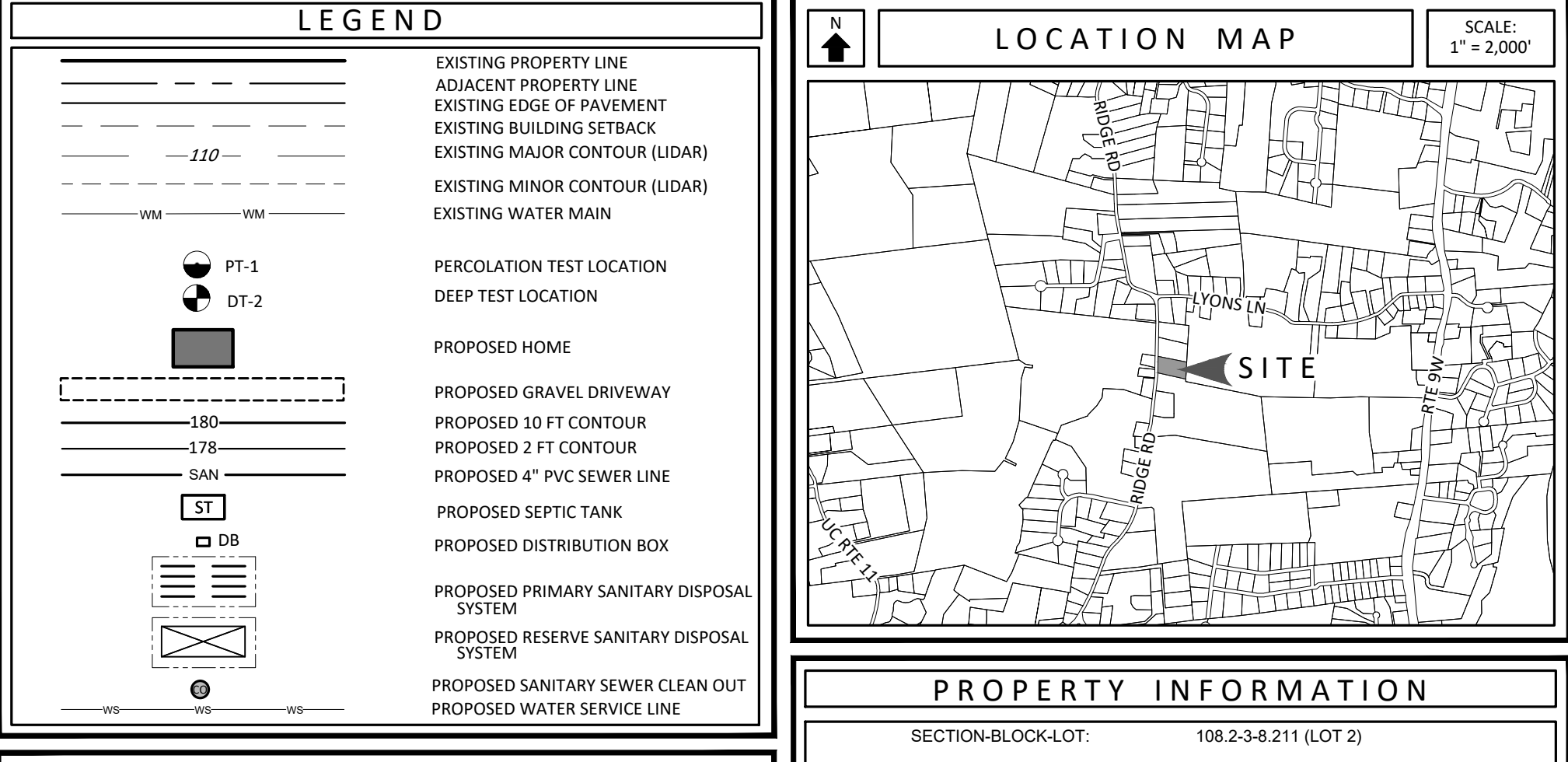
9 DOMESTIC SERVICE W/ CURB BOX
SCALE: N.T.S.



10 WATER MAIN - SANITARY / STORM SEWER SEPARATION DETAIL
SCALE: N.T.S.



10 WATER MAIN - SANITARY / STORM SEWER SEPARATION DETAIL
SCALE: N.T.S.



WASTEWATER SYSTEM DESIGN CALCULATIONS

PROPOSED WASTEWATER FLOW:
3-BEDROOM HOUSE @ 110 GALLONS PER BEDROOM + 330 GPD
SEPTIC TANK:
SEPTIC TANK SIZED AS PER APPENDIX 75 A - WASTEWATER TREATMENT STANDARDS:
3-BEDROOM HOUSE + 1,000 GALLON TANK REQUIRED, 1,250 GALLON TANK PROPOSED
ABSORPTION FIELD:
PRIMARY AREA - RAISED ABSORPTION TRENCH SYSTEM
LENGTH OF ABSORPTION TRENCH REQUIRED =
(FLOW RATE (Q) + APPLICATION RATE) ÷ 2 SQUARE FEET/FOOT OF TRENCH
= (330 GPD ÷ 0.7 GAL/DAY/SQ. FT.) ÷ 2 SQ. FT./FT.
= 235 LINEAL FEET OF ABSORPTION TRENCH REQUIRED
INSTALL 5 TRENCHES @ 50 LINEAL FEET
= 250 LINEAL FEET OF ABSORPTION TRENCH REQUIRED
RESERVE AREA - RAISED ABSORPTION TRENCH SYSTEM
LENGTH OF ABSORPTION TRENCH REQUIRED =
(FLOW RATE (Q) + APPLICATION RATE) ÷ 2 SQUARE FEET/FOOT OF TRENCH
= (330 GPD ÷ 0.7 GAL/DAY/SQ. FT.) ÷ 2 SQ. FT./FT.
= 235 LINEAL FEET OF ABSORPTION TRENCH REQUIRED
INSTALL 5 TRENCHES @ 50 LINEAL FEET
= 250 LINEAL FEET OF ABSORPTION TRENCH PROVIDED
BASAL AREA:
BASAL AREA REQUIRED: 330 GPD ÷ 0.2 SF/GPD = 1,650 SF
BASAL AREA PROVIDED: 57' x 31' = 1,767 SF

SITE NOTE
1. MUNICIPAL WATER PROVIDED AT SITE.

MAX DIRECT TAP SIZE FOR DIP			
PIPE SIZE (INCHES)	THICKNESS CLASS	WALL THICKNESS (INCHES)	MAX TAP SIZE (INCHES)
4"	52	0.29	3/4
6"	52	0.31	1
8"	52	0.33	1-1/4
10"	52	0.35	1-1/2
12"	52	0.37	2
14"	52	0.39	2
16"	52	0.40	2
18"	52	0.41	2
20"	52	0.42	2
24"	52	0.44	2

MAX DIRECT TAP SIZE FOR DIP			
PIPE SIZE (INCHES)	PRESSURE CLASS	WALL THICKNESS (INCHES)	MAX TAP SIZE (INCHES)
4"	350	0.25	3/4
6"	350	0.25	1
8"	350	0.25	1
10"	350	0.26	1
12"	350	0.28	1-1/4
14"	350	0.31	1-1/2
16"	350	0.34	2
18"	350	0.36	2
20"	350	0.38	2
24"	350	0.43	2

WASTEWATER APPLICATION RATES	
PERCOLATION RATE (MINUTES/INCH)	APPLICATION RATE (GAL/DAY/SQ. FT.)
1 - 5	1.20
6 - 7	1.0
8 - 10	0.90
11 - 15	0.80
16 - 20	0.70
21 - 30	0.60
31 - 45	0.50
46 - 60	0.45

SURVEY NOTES	
1. PROPERTY LINES, STRUCTURE LOCATIONS, TOPOGRAPHY AND OTHER SITE FEATURES FROM 'MAP OF SUBDIVISION AND LOT LINE REVISION OF LANDS OF THE SHIRLEY D. SARINSKY LIVING TRUST', DATED OCTOBER 11, 2022 PREPARED BY BROOKS & BROOKS LAND SURVEYORS, P.C.	

DEEP TEST RESULTS			
TEST	ROCK DEPTH	WATER DEPTH	SOIL PROFILE
DT-1	--	--	0'-8" TOPSOIL 6'-23" SILTY LOAM 23'-44" MOTTLED CLAY
DT-2	--	--	0'-10" TOPSOIL 10'-23" SILTY LOAM 23'-32" MOTTLED CLAY

NOTE: DEEP TESTS WERE COMPLETED ON DECEMBER 14, 2022 IN THE PRESENCE OF ULSTER COUNTY DEPARTMENT OF HEALTH REPRESENTATIVE CHRIS KRESSER.

PERCOLATION TEST RESULTS		
TEST	HOLE DEPTH	STABILIZED RATE
PT-1	12"	55 M
PT-2	12"	42 M

NOTE: PERCOLATION TESTING WAS CONDUCTED BY WILLINGHAM ENGINEERING ON DECEMBER 19, 2022.