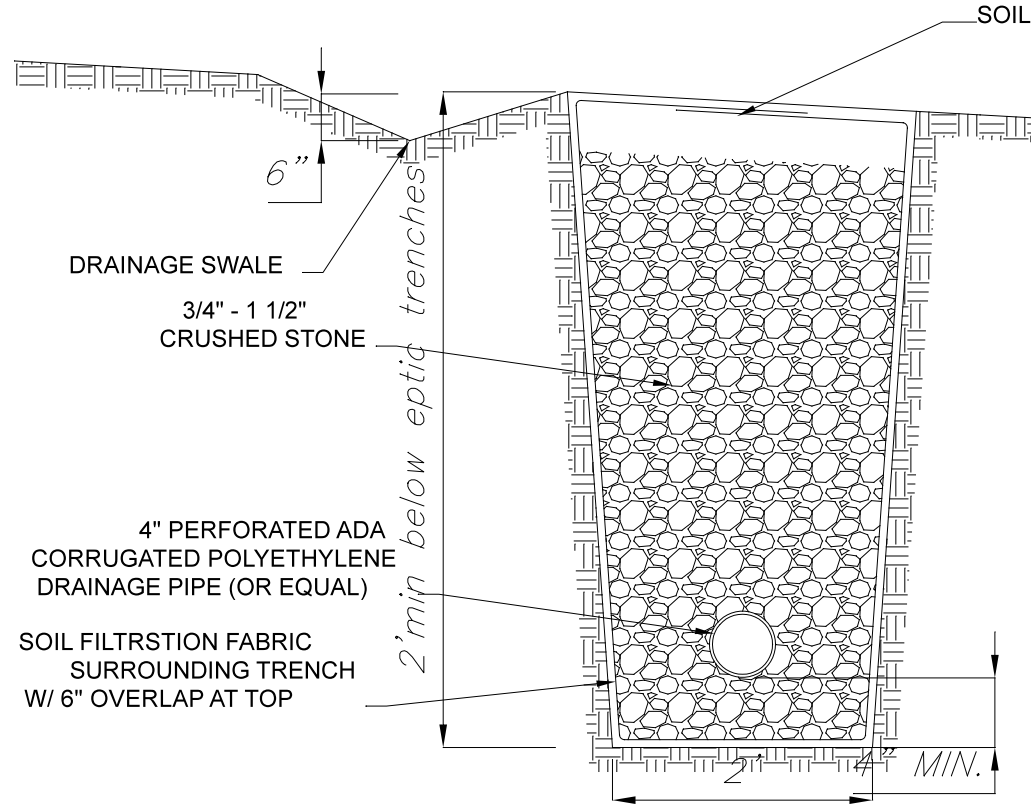


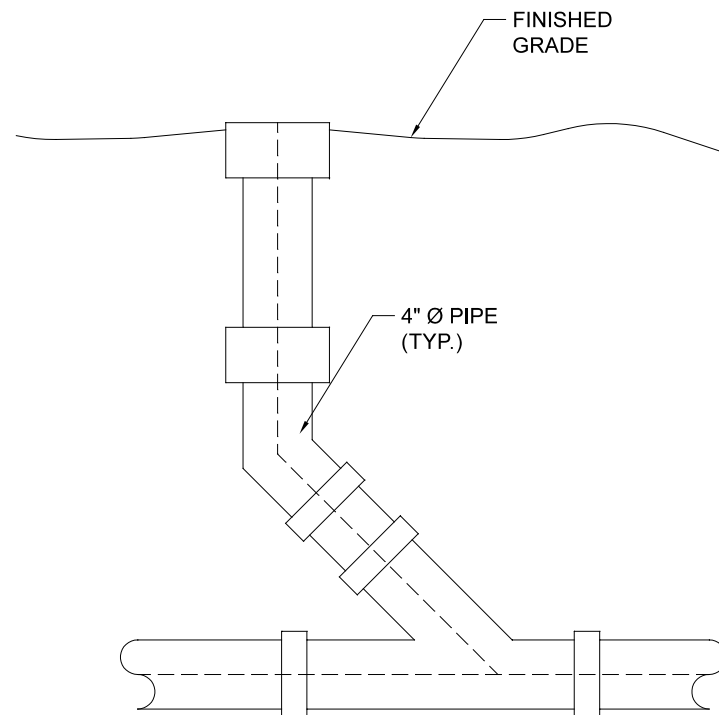
SEPTIC SYSTEM PLAN VIEW  
(N.T.S.)



CURTAIN DRAIN NOTES

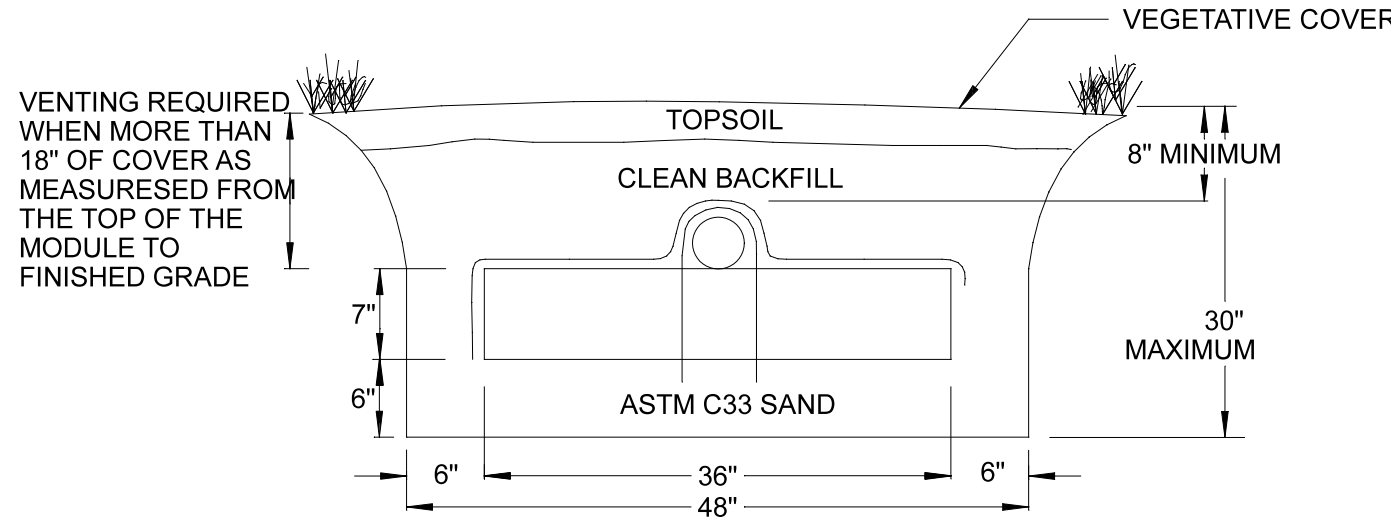
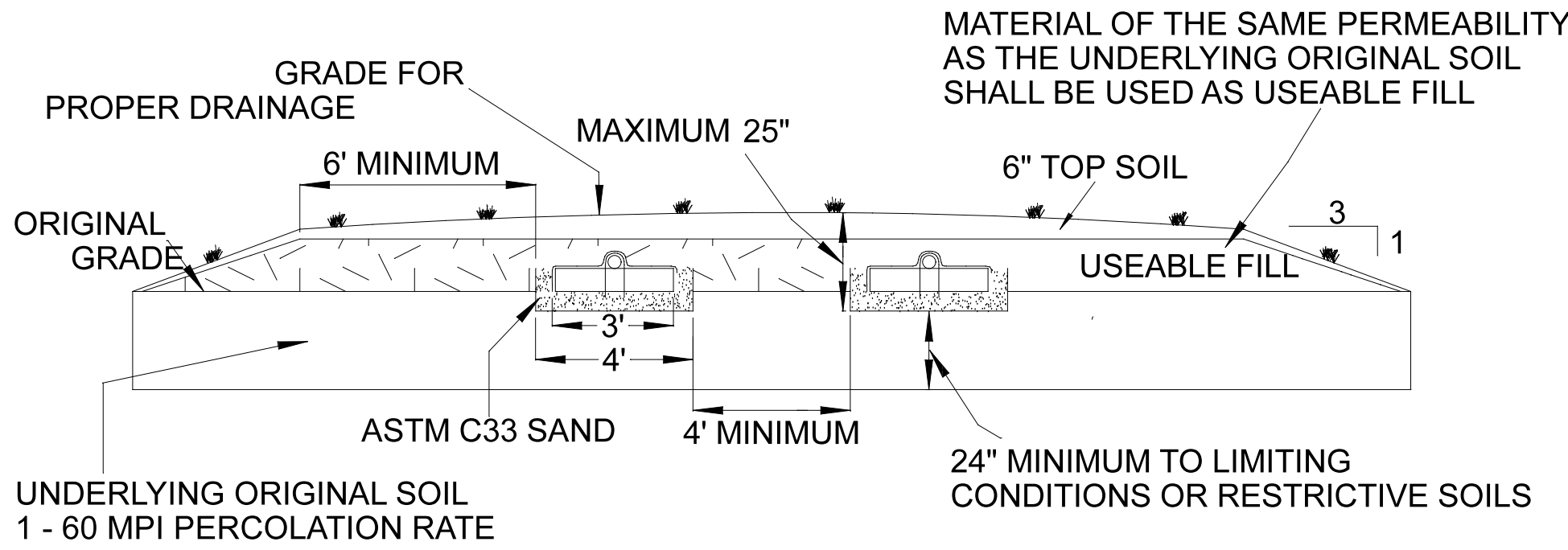
1. CURTAIN DRAIN SHALL BE INSTALLED UPHILL AND ALONG ONE SIDE OF THE ABSORPTION FIELD AS SHOWN ON THE PLANS.
2. PLACE SOIL FILTRATION FABRIC ALONG THE BOTTOM AND SIDES OF TRENCH. PLACE 4" CRUSHED STONE AT BOTTOM, INSTALL PERFORATED PIPE, AND BACKFILL WITH CRUSHED STONE. OVERLAP SOIL FILTRATION FABRIC OVER CRUSHED STONE BEFORE PLACEMENT OF IMPERVIOUS SOIL.
3. TRANSITION FROM PERFORATED TO SOLID PIPE MAY BE MADE ADJACENT TO THE LAST LATERAL INSTALLED.
4. CLEANOUTS TO BE INSTALLED FLUSH WITH FINISHED GRADE AT LOCATIONS SHOWN ON PLAN.
5. END OF SOLID PVC CURTAIN DRAIN OUTLET SHALL BE SCREENED.
6. SWALES AND CURTSIN DRAIN DISCHARGES TO BE DIRECTED AWAY FROM SBSORPTION FIELD.

CURTAIN DRAIN DETAIL  
(N.T.S.)



CLEANOUT DETAIL  
(N.T.S.)

CLEANOUTS SHALL BE INSTALLED BEFORE ALL PIPE BENDS BETWEEN THE SEPTIC TANK AND DISTRIBUTION BOX AND OR AT EVERY 75' OF STRAIGHT PIPE.  
CLEANOUTS SHALL NOT BE USED WITH PUMP CHAMBERS.



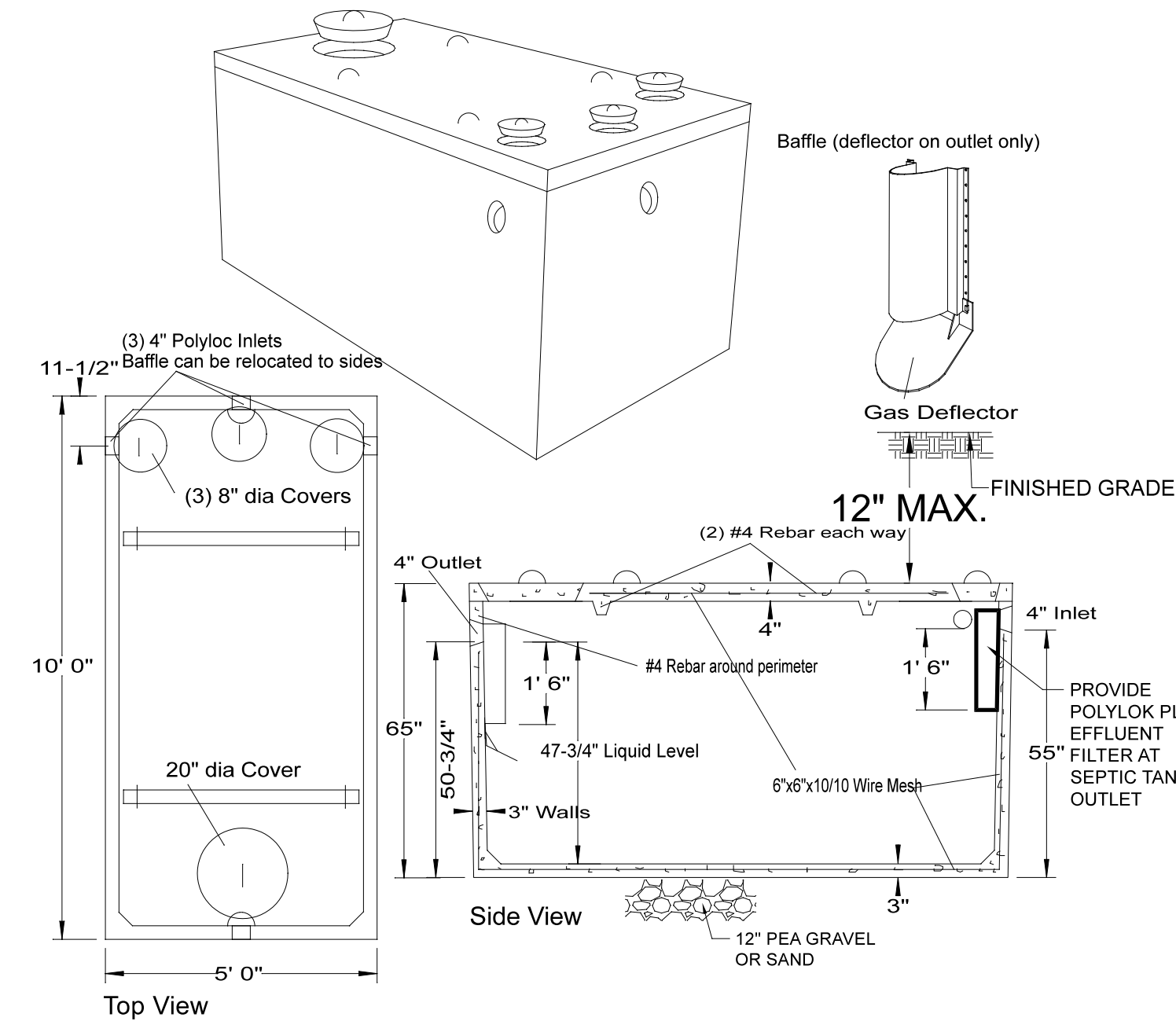
ELJEN SYSTEM NOTES

1. THIS DESIGN AND CONSTRUCTION REQUIREMENT COMPLIES WITH APPENDIX 75-A AND LOCAL HEALTH DEPARTMENT REGULATIONS.
2. THIS DESIGN COMPLIES WITH AND MUST BE INSTALLED IN ACCORDANCE WITH THE MOST CURRENT ELJEN NEW YORK DESIGN AND INSTALLATION MANUAL.
3. THIS SYSTEM IS NOT DESIGNED FOR USE WITH A GARBAGE DISPOSAL.
4. THIS SYSTEM IS NOT DESIGNED FOR BACKWASH FROM A WATER SOFTENER.
5. ORGANIC MATERIAL THAT CAN RESTRICT FLOW MUST BE REMOVED FOR RAISED BEDS. THE SOIL MUST BE SCARIFIED TO PROVIDE DEEP CHANNELS FOR THE SAND. A PLOWED INTERFACE ON CONTOUR IS RECOMMENDED TO PREPARE THE SOIL FOR FILL PLACEMENT.
6. SCARIFY ANY SMEARED SUBSOIL PRIOR TO FILL PLACEMENT.
7. FILL MATERIAL SHALL MEET OR EXCEED STATE OF NEW YORK CODE REQUIREMENTS. ALL FILL MATERIAL SHALL BE CLEAN BANK RUN SAND, FREE OF TOPSOIL, HUMUS, AND "DREDGING" DIRECTLY BENEATH THE GSF SYSTEM.
8. ASTM C33 SPECIFIED SAND WITH LESS THAN 10% PASSING A #100 SIEVE AND LESS THAN 5% PASSING A #200 SIEVE SHALL BE PLACED BELOW AND AROUND THE GSF MODULES, WITH 6 INCHES MINIMUM UNDERNEATH AND 6 INCHES MINIMUM SURROUNDING THE GSF MODULES IN TRENCH CONFIGURATIONS. IN BED SYSTEMS, USE 8 INCHES MINIMUM UNDERNEATH THE MODULES WITH 12 INCHES MINIMUM BETWEEN MODULE ROWS AND 12 INCHES MINIMUM AROUND THE PERIMETER OF THE MODULES.
9. ELJEN PROVIDED GEOTEXTILE COVER FABRIC SHALL PROVIDE PROPER TENSION AND ORIENTATION OF THE FABRIC AROUND THE SIDES OF THE PERFORATED PIPE ON TOP OF THE GSF MODULES. FABRIC SHOULD BE NEITHER TOO LOOSE, NOR TOO TIGHT. THE CORRECT TENSION OF THE COVER FABRIC IS SET BY SPREADING THE COVER FABRIC OVER THE TOP OF THE MODULE AND DOWN BOTH SIDES OF THE MODULE WITH THE COVER FABRIC TENTED OVER THE TOP OF THE PERFORATED DISTRIBUTION PIPE. PLACE SHOVEL FULLS OF SPECIFIED SAND DIRECTLY OVER THE PIPE AREA ALLOWING THE COVER FABRIC TO FORM A MOSTLY VERTICAL ORIENTATION ALONG THE SIDES OF THE PIPE. REPEAT THIS STEP MOVING DOWN THE PIPE.
10. BACKFILL MATERIAL SHALL BE CLEAN WITH NO ROOTS OR STONES LARGER THAN 2 INCHES IN ANY DIMENSION TO A MINIMUM DEPTH OF 8 INCHES OVER THE GSF MODULES AND FINAL COVER FOR VEGETATION OF 4 INCHES TO 6 INCHES OF CLEAN LOAM.
11. ANY SYSTEM WHICH IS MORE THAN 18 INCHES BELOW FINISH GRADE AS MEASURED FROM THE TOP OF THE MODULE SHALL BE VENTED.

ELJEN SYSTEM ASTM C33 SAND SPECIFICATION		
SIEVE SIZE	SIEVE SQUARE OPENING SIZE	SPECIFICATION PERCENT PASSING (WET SIEVE)
0.375"	9.5 mm	100.0 - 100.0
#4	4.75mm	95.0 - 100.0
#8	2.36 mm	80.0 - 100.0
#16	1.18 mm	50.0 - 85.0
#30	600 um	25.0 - 60.0
#60	300 um	5.0 - 30.0
#100	150 um	< 10.0
#200	75 um	< 5.0

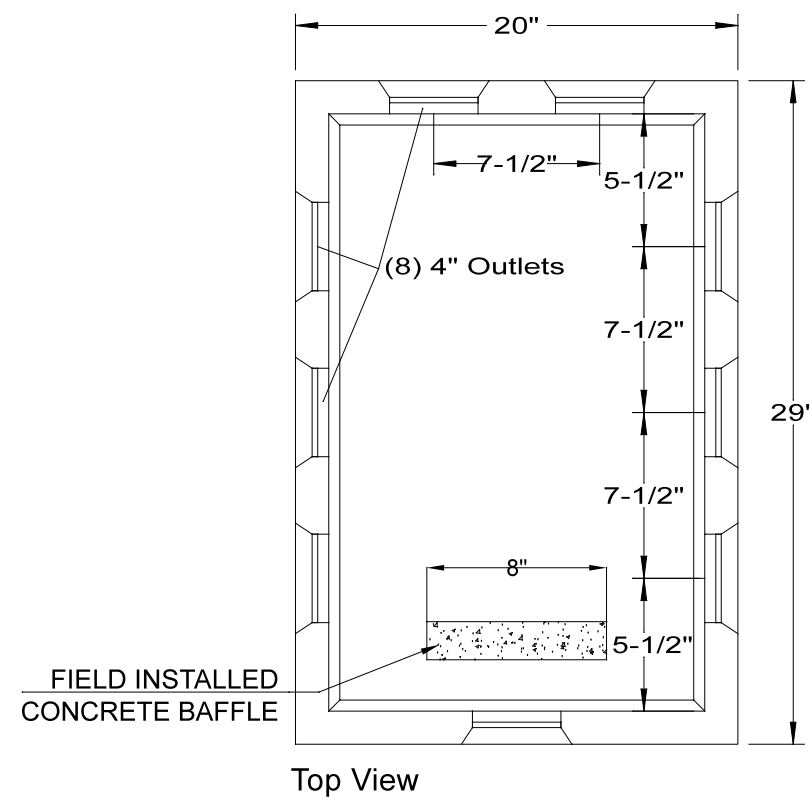
Polylok PL-68 (OR NSF46 CERTIFIED APPROVED EQUAL)

SPECIFICATIONS
Construction: PVC or Polyethylene plastic NSF Standard 46 Certified
SEPTIC TANK & GREASE TRAP EFFLUENT FILTERS
Woodard's Concrete Products, Inc. 629 Lybolt Road, Bulville, NY 10915 (845) 361-3471 / Fax 361-1050



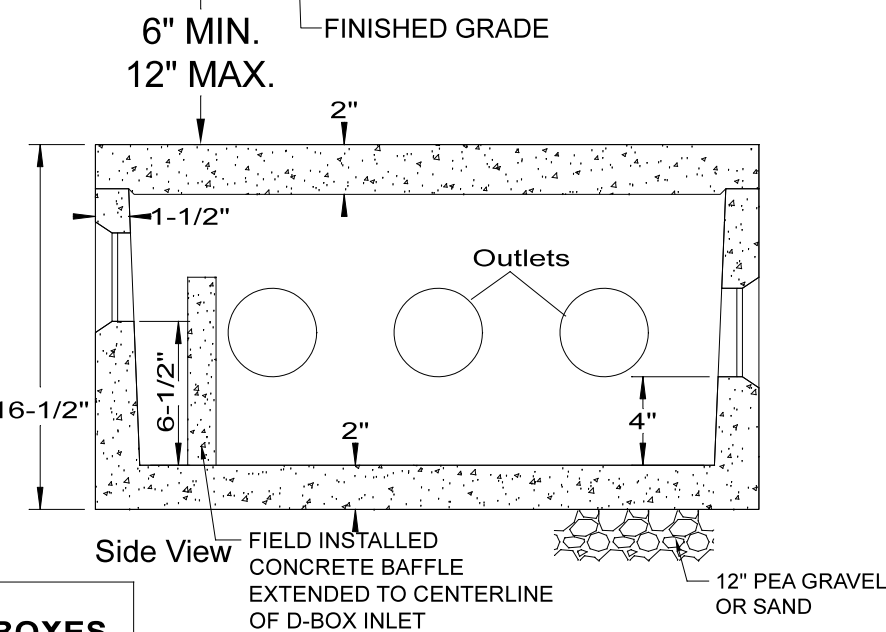
SPECIFICATIONS	PRECAST SEPTIC TANKS MODEL ST-1250 / 1250 GALLONS
Concrete Min. Strength: 4,000 psi at 28 days Reinforcement: #4 Rebar, 6x6x10ga. WWM Air Entrainment: 5% Construction Joint: Butyl Rubber Sealant Pipe Connection: Polylok Seal (patented) Weight = 9,500 lbs Load Rating: 300 psf	Woodard's Concrete Products, Inc. 629 Lybolt Road, Bulville, NY 10915 (845) 361-3471 / Fax 361-1050

1,250 GALLON SEPTIC TANK  
N.T.S.



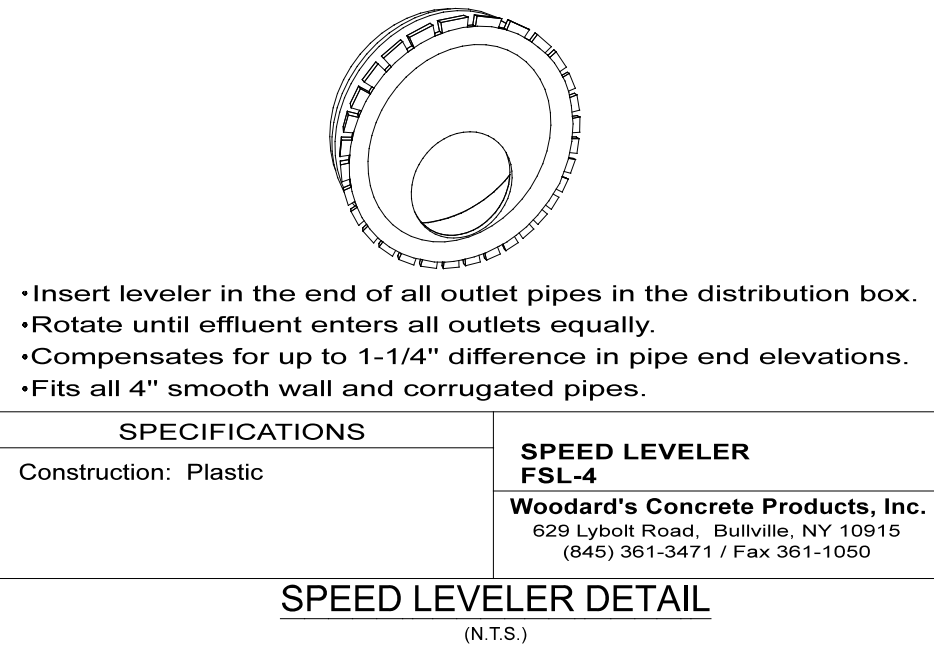
DISTRIBUTION BOX NOTES:

1. ALL OUTLET INVERT ELEVATIONS MUST BE SET AT THE SAME LEVEL.
2. FLOW EQUALIZERS ARE REQUIRED ON ALL OUTLETS IN USE.
3. OUTLETS MUST BE USED IN A MANNER THAT WILL ALLOW ACCESS TO THE EXPANSION AREA WITHOUT DISTURBING EXISTING PIPING.



SPECIFICATIONS	PRECAST DISTRIBUTION BOXES MODEL DB-9 / 8 OUTLET BOX
Concrete Min. Strength: 4,000 psi at 28 days Reinforcement: Fiber, 10ga. wire mesh Air Entrainment: 5% Pipe Connection: Polylok Seal (patented) Load Rating: 300 psf Weight = 290 lbs	Woodard's Concrete Products, Inc. 629 Lybolt Road, Bulville, NY 10915 (845) 361-3471 / Fax 361-1050

DISTRIBUTION BOX DETAIL  
N.T.S.



- Insert leveler in the end of all outlet pipes in the distribution box.
- Rotate until effluent enters all outlets equally.
- Compensates for up to 1-1/4" difference in pipe end elevations.
- Fits all 4" smooth wall and corrugated pipes.

SPECIFICATIONS	SPEED LEVELER FSL-4
Construction: Plastic	Woodard's Concrete Products, Inc. 629 Lybolt Road, Bulville, NY 10915 (845) 361-3471 / Fax 361-1050

ENGINEERS' CERTIFICATION:

I hereby certify to the hereon listed parties that the sewage disposal system depicted on this plan has been designed in accordance with the New York State Public Health Law and all promulgated thereunder.

Signature \_\_\_\_\_ Date \_\_\_\_\_ JONATHAN CELLA, P.E.  
51 HUNT ROAD  
WALLKILL, NY 12589

NYS License Number: 085069

**Jonathan N. Milfen, LLS**  
PROFESSIONAL LAND SURVEYOR  
CERTIFIED TO BE CORRECT AND ACCURATE  
N.Y. LIC. No. 050746

**Septic Details**  
of the lands of  
**Carl D. Fredericks**  
Automated Construction Enhanced Solutions, Inc.  
**Professional Land Surveying**  
1229 Route 300 - Suite 4 - Newburgh, NY 12550  
Office: 845-943-7198 Field: 914-906-8830 Web: accessurveying.com  
Prepared For Tax Map Parcel  
**108.3-4-33.120 & 108.3-5-25**  
aka 420 Plattekill Road  
situated in the  
**Town of Marlborough & Plattekill**  
**County of Ulster, New York 12542**  
DATE: 03/17/2023 SCALE: As Shown JOB No. 22104FRE DRAWN BY: jnm