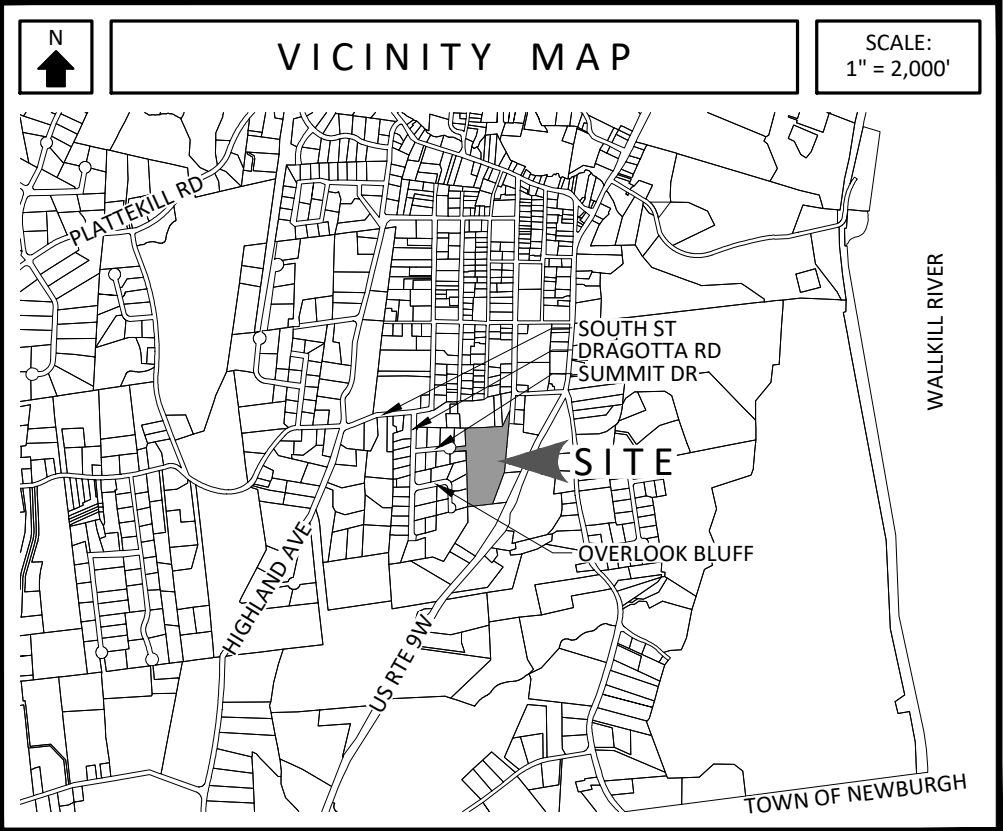


INDEX TO DRAWINGS	
DRAWING NUMBER	TITLE
SP-1	SITE PLAN
SP-2	EXISTING CONDITIONS & DEMOLITION PLAN
SP-3	LIGHTING PLAN
SP-4	GRADING & UTILITY PLAN
SP-5	EROSION & SEDIMENT CONTROL PLAN
SD-1	SITE DETAILS
SD-2	SITE DETAILS
SD-3	SITE DETAILS
SD-4	EROSION & SEDIMENT CONTROL DETAILS

PARKING NOTES	
PER \$155-27 REQUIRED PARKING:	
MULTIPLE DWELLINGS (RESIDENTIAL) = 1.5 SPACES FOR EACH DWELLING UNIT (ROUNDED UP TO A WHOLE NUMBER)	
4 BUILDINGS WITH 6 UNITS PER BUILDING = 24 TOTAL UNITS	
24 UNITS x 1.5 SPACES PER UNIT = 36 SPACES REQUIRED	
36 PARKING SPACES PROVIDED	
HANDICAP PARKING:	
1 SPACE PER 25 SPACES = 2 SPACES REQUIRED	
2 HANDICAP PARKING SPACES PROVIDED	



PROPERTY INFORMATION	
SECTION-BLOCK-LOT:	108.4-6-29.311
PARCEL AREA:	7.32 ACRES
ZONING DISTRICT:	R - RESIDENTIAL DISTRICT
OWNER:	SUMMIT DRIVE PROPERTIES LLC 3121 ROUTE 9W NEW WINDSOR, NEW YORK

ZONING INFORMATION		
ZONE:	R - RESIDENTIAL DISTRICT	
CURRENT USE:	VACANT	
PROPOSED USE:	MULTIPLE DWELLINGS (RESIDENTIAL)	
ITEM	REQUIRED	PROVIDED
MINIMUM LOT AREA <sup>1</sup>	3 ACRES	7.32 ACRES
MAXIMUM DENSITY <sup>2</sup>	6 DU PER ACRE	3.3 DU PER ACRE
MINIMUM FRONT YARD <sup>3</sup>	40'	62'
MINIMUM REAR YARD <sup>3</sup>	30'	219'
MINIMUM SIDE YARD <sup>3</sup>	30'	143'
MINIMUM LOT WIDTH <sup>4</sup>	200'	813'
MINIMUM LOT DEPTH	100'	397'
MAXIMUM BUILDING COVERAGE	30%	2.3%
MAXIMUM LOT COVERAGE	15%	9.2%
MAXIMUM BUILDING STORIES	2 1/2	≤2 1/2
MAXIMUM BUILDING HEIGHT	35'	27'
DWELLING UNITS PER ACRE	6 DU/AC MAX	<4 DU/AC

<sup>1</sup>PER SPECIAL USE NOTES AS INDICATED BELOW  
<sup>2</sup>LOT IS CURRENTLY WITHIN MARLBOROUGH WATER DISTRICT AND WILL PETITION TO BE ALLOWED IN MARLBOROUGH SEWER DISTRICT #1

SPECIAL USE NOTES	
PER \$155-30 MULTIPLE DWELLINGS IN THE 'R' DISTRICT	
1. MINIMUM LOT AREA SHALL BE THREE ACRES, WITH A MINIMUM LOT WIDTH OF 200 FEET	
2. MAXIMUM LOT COVERAGE SHALL BE 15%	
3. LOT SHALL BE SERVED BY AND UTILIZE PUBLIC WATER AND SEWER	
4. SETBACKS FOR FRONT YARD SHALL BE 40 FEET, EACH SIDE YARD 30 FEET AND REAR YARD 30 FEET	
5. MAXIMUM DENSITY SHALL BE SIX DWELLING UNITS PER ACRE	

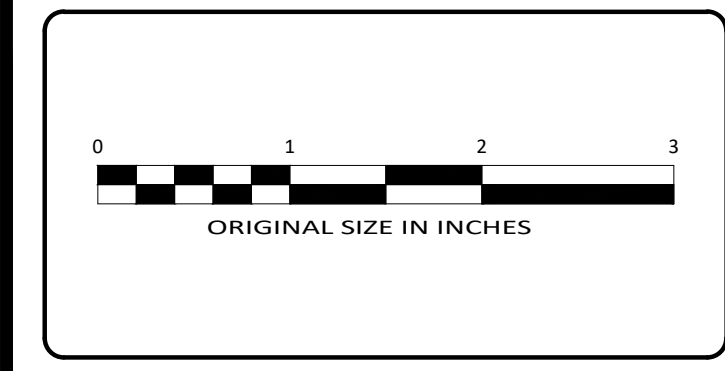
LEGEND	
	EXISTING PROPERTY LINE
	ADJACENT PROPERTY LINE
	BUILDING SETBACK
	EXISTING 10' CONTOUR (LIDAR)
	EXISTING 2' CONTOUR (LIDAR)
	EXISTING EDGE OF PAVEMENT
	EXISTING TREE LINE
	EXISTING SANITARY SEWER MANHOLE
	EXISTING SEWER MAIN
	EXISTING BUILDING
	EXISTING STONE WALL
	PROPOSED BUILDING
	PROPOSED ASPHALT PAVEMENT
	PROPOSED CONCRETE WALK
	PROPOSED SNOW STORAGE AREA
	PROPOSED SPLIT RAIL FENCE
	PROPOSED CHAIN LINK FENCE
	PROPOSED HYDRANT
	PROPOSED WATER VALVE
	PROPOSED SANITARY SEWER MANHOLE
	PROPOSED CATCH BASIN
	PROPOSED END SECTION WITH RIP-RAP OUTLET PROTECTION
	PROPOSED OVERFLOW WEIR
	PROPOSED DOWNSPOUT
	PROPOSED LANDSCAPING AREA
	PROPOSED LEVEL SPREADER

SURVEY NOTES	
1. PROPERTY LINES, STRUCTURE LOCATIONS AND OTHER SITE FEATURES ADDED FROM 'SURVEY AND LOT LINE CHANGE FOR N & A DEVELOPMENT CORP.' DATED JULY 19, 2020 AND PREPARED BY GARY R. RICH, LLS.	
2. TOPOGRAPHY SHOWN IS LIDAR DERIVED, 2 FOOT INTERVAL CONTOURS AVAILABLE FROM ULSTER COUNTY. CONTOURS WERE PRODUCED FROM 2014 LIDAR DATASET AND 2015 TOPOGRAPHIC 1m DEM.	

PLANTING NOTES	
1. ALL PLANTS TO CONFORM TO THE CURRENT EDITION OF THE AMERICAN ASSOCIATION OF NURSERYMEN'S STANDARDS.	
2. ALL EXISTING SOILS UTILIZED IN THE PROPOSED PLANTINGS SHALL BE AMENDED WITH COMPOST. ALL ROCKS GREATER THAN AN INCH IN DIAMETER, FOUND WITHIN THE PLANTING AREAS SHALL BE REMOVED.	
3. GRASS AND LAWN AREAS SHALL BE SEEDED WITH A SEED MIXTURE APPROPRIATE FOR SUN CONDITIONS AND SHALL INCLUDE STRAW MULCH. PRIOR TO SEEDING, ALL OPEN SOIL AREAS SHALL BE RAKED SMOOTH AND ANY ROCKS REMOVED FROM THE PROPOSED AREAS TO BE SEEDED. SEEDING SHALL NOT OCCUR DURING SUMMER MONTHS. REFER TO SEED MANUFACTURERS RECOMMENDATIONS. ONE YEAR GUARANTEE ON SEEDED AREAS REQUIRED.	
4. ALL PLANTS SHALL HAVE A ONE YEAR GUARANTEE FROM THE DATE OF ACCEPTANCE OF THE INSTALLATION FROM THE CONTRACTOR COMPLETING THE INSTALLATION.	
5. ALL DETENTION AREAS SHALL BE SEEDED WITH ERNST SEED, NATIVE DETENTION AREA SEED MIXTURE, ERNM-X-183, SEEDING RATE, MULCHING AND INSTALLATION IN ACCORDANCE WITH THE MANUFACTURERS RECOMMENDATIONS, SPRING PLANTING PREFERRED.	
6. ALL BIORETENTION AREAS SHALL BE SEEDED WITH ERNST CONSERVATION SEEDS, MEADVILLE, PA. RAIN GARDEN MIXTURE ERNM-X-180, SEEDING RATE, MULCHING AND INSTALLATION IN ACCORDANCE WITH THE MANUFACTURER'S RECOMMENDATIONS, SPRING PLANTING PREFERRED.	
7. ALL PLANTED AREAS, INCLUDING INDIVIDUAL PLANTS AS WELL AS BIO-RETENTION AREAS AND DETENTION AREAS SHALL BE WATERED FOR A PERIOD OF ONE YEAR AFTER INSTALLATION, DURING PERIODS OF DRY WEATHER. DRY WEATHER IS CONSIDERED TO BE LESS THAN ONE INCH OF RAINFALL IN A GIVEN 7 DAY PERIOD.	

PLANTING SCHEDULE						
NUMBER	KEY	COMMON NAME	BOTANICAL NAME	SIZE	ROOT	NOTES
6	RM	OCTOBER GLORY RED MAPLE	ACER RUBRUM 'OCTOBER GLORY'	2.5" CALIPER	B&B	
21	NS	NORWAY SPRUCE	PICEA ABIES	6'-7" HEIGHT	B&B	
8	RB	HERITAGE RIVER BIRCH	BETULA NIGRA 'HERITAGE'	8'-10" HEIGHT	B&B	MULTI-STEMMED PLANT
14	WB	WINTERBERRY	ILEX VERTICILLATA	2 GALLON	CONTAINER	

NOTE: ALL PLANTS TO BE NATIVE.



ALL RIGHTS RESERVED. COPY OR REPRODUCTION OF THIS PLAN OR ANY PORTION THEREOF, IS PROHIBITED WITHOUT THE WRITTEN PERMISSION OF THE DESIGN ENGINEER, SURVEYOR, OR ARCHITECT.

UNDER ARTICLE 145 (ENGINEERING), SECTION 2209 (2) OF THE NEW YORK STATE EDUCATION LAW, IT IS UNLAWFUL FOR ANY PERSON TO ALTER ANY ITEM ON THIS DRAWING, UNLESS ACTING UNDER THE DIRECTION OF A LICENSED PROFESSIONAL ENGINEER OR LICENSED SURVEYOR. IF ANY ITEM IS ALTERED, THE ALTERING ENGINEER AND/OR SURVEYOR SHALL AFFIX TO THE ITEM HIS SEAL AND THE NOTATION "ALTERED BY" FOLLOWED BY HIS SIGNATURE AND THE DATE OF SUCH ALTERATION, AND A SPECIFIC DESCRIPTION OF THE ALTERATION.

183 Main Street  
New Paltz, New York 12561  
T 845.255.0210 F 845.256.8110  
www.willinghamengineering.com

REV	DATE	DESCRIPTION
2	09/05/24	REVISIONS PER PLANNING BOARD
1	02/23/24	REVISIONS PER PLANNING BOARD

**SITE PLAN**

**SUMMIT DRIVE PROPERTIES LLC**

SUMMIT DRIVE

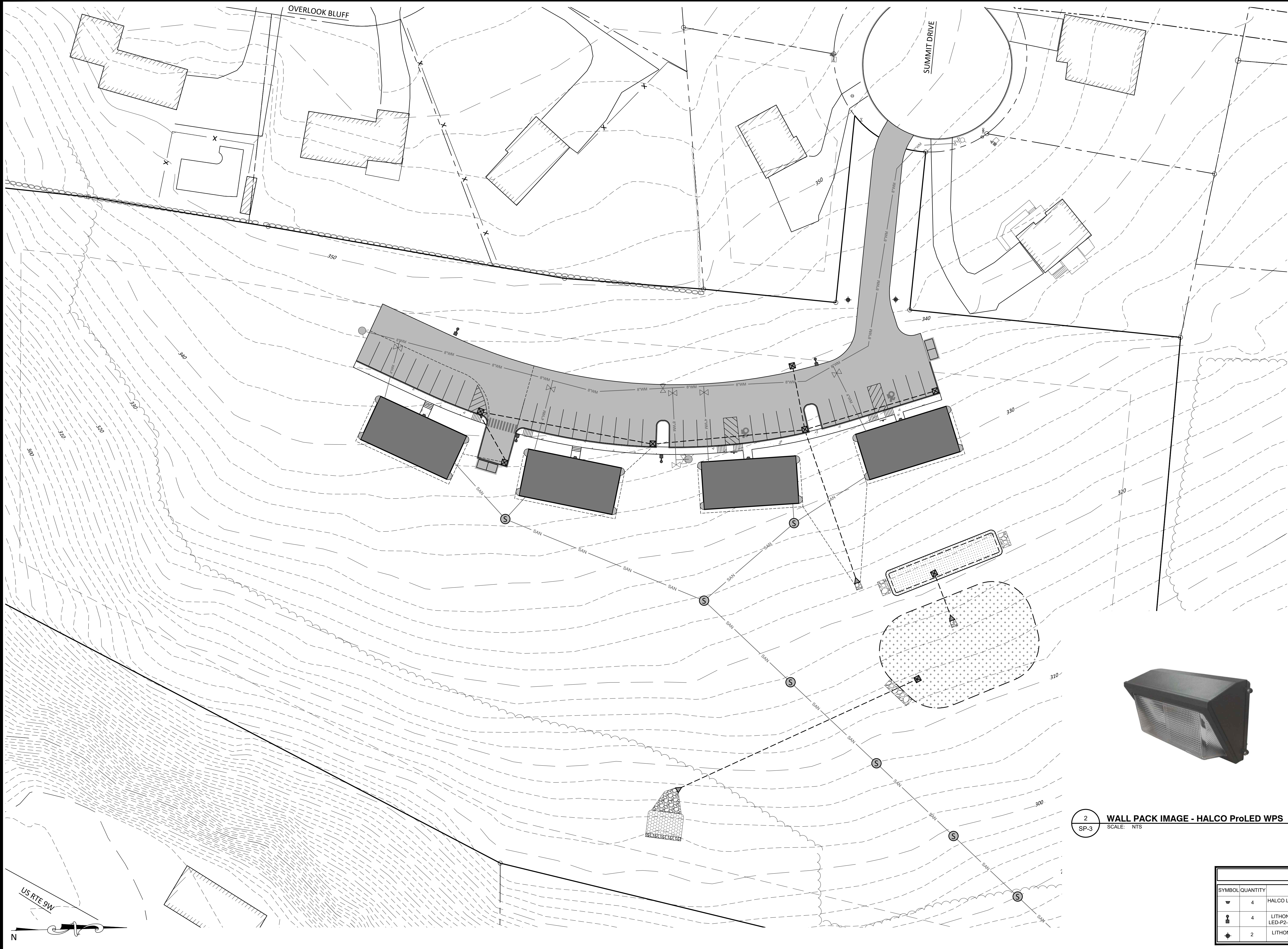
TOWN OF MARLBOROUGH, ULSTER COUNTY, NEW YORK

DRAWN BY	CHECKED BY
MLT	
DATE	SCALE
09/22/23	1"=30'
PROJECT NO.	
23006	
SHEET NO.	
SP-1	









LEGEND	
	EXISTING PROPERTY LINE
	ADJACENT PROPERTY LINE
	BUILDING SETBACK
	EXISTING 10' CONTOUR (LIDAR)
	EXISTING 2' CONTOUR (LIDAR)
	EXISTING EDGE OF PAVEMENT
	EXISTING TREE LINE
	EXISTING SANITARY SEWER MANHOLE
	EXISTING SEWER MAIN
	EXISTING BUILDING
	EXISTING STONE WALL
	PROPOSED BUILDING
	PROPOSED ASPHALT PAVEMENT
	PROPOSED CONCRETE WALK
	PROPOSED HYDRANT
	PROPOSED WATER VALVE
	PROPOSED SANITARY SEWER MANHOLE
	PROPOSED CATCH BASIN
	PROPOSED END SECTION WITH RIP-RAP OUTLET PROTECTION
	PROPOSED OVERFLOW WEIR
	PROPOSED LANDSCAPING AREA



1 POLE DETAIL - LITHONIA D SERIES DSX1  
SCALE: NTS

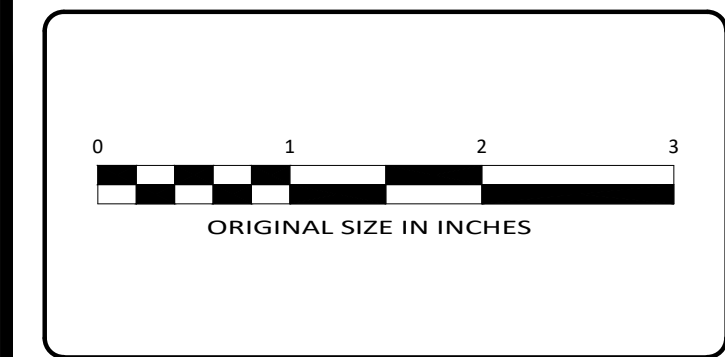


2 WALL PACK IMAGE - HALCO ProLED WPS  
SCALE: NTS



3 LITHONIA RADB LED BOLLARD  
SCALE: NTS

LUMINAIRE SCHEDULE						
SYMBOL	QUANTITY	LAMP	COLOR	COLOR TEMP	LUMENS	MOUNTING HEIGHT
	4	HALCO LIGHTING TECHNOLOGIES - WPS-28-4K-U	BLACK POWDER COATED ALUMINUM	4,000 K	3,514	WALL 12'
	4	LITHONIA D-SERIES SIZE 1 DSX1 LED-P2-30K-BLC-RPA-PIR-DBBTXD	BLACK POWDER COATED ALUMINUM	3,000 K	6,770	POLE 15'
	2	LITHONIA RADB LED BOLLARD - P1 27K ASY DBLXD	BLACK	2,700 K	312	BOLLARD 3.5'



ALL RIGHTS RESERVED. COPY OR REPRODUCTION OF THIS PLAN OR ANY PORTION THEREOF, IS PROHIBITED WITHOUT THE WRITTEN PERMISSION OF THE DESIGN ENGINEER, SURVEYOR, OR ARCHITECT.

UNDER ARTICLE 145 (ENGINEERING), SECTION 2205 (2) OF THE NEW YORK STATE EDUCATION LAW, IT IS UNLAWFUL FOR ANY PERSON TO ALTER ANY ITEM ON THIS DRAWING, UNLESS ACTING UNDER THE DIRECTION OF A LICENSED PROFESSIONAL ENGINEER OR LICENSED SURVEYOR. IF ANY ITEM IS ALTERED, THE ALTERING ENGINEER AND/OR SURVEYOR SHALL AFFIX TO THE ITEM HIS SEAL AND THE NOTATION "ALTERED BY" FOLLOWED BY HIS SIGNATURE AND THE DATE OF SUCH ALTERATION, AND A SPECIFIC DESCRIPTION OF THE ALTERATION.

183 Main Street  
New Paltz, New York 12561  
T 845.255.0210 F 845.256.8110  
www.willinghamengineering.com

REV	DATE	DESCRIPTION
2	09/05/24	REVISIONS PER PLANNING BOARD
1	02/23/24	REVISIONS PER PLANNING BOARD

LIGHTING PLAN

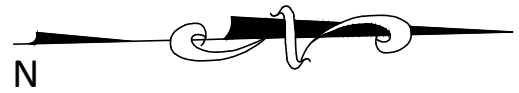
SUMMIT DRIVE PROPERTIES LLC

SUMMIT DRIVE

TOWN OF MARLBOROUGH, ULSTER COUNTY, NEW YORK

DRAWN BY	CHECKED BY
MLT	
DATE	SCALE
09/22/23	1"=30'
PROJECT NO.	
23006	
SHEET NO.	
SP-3	

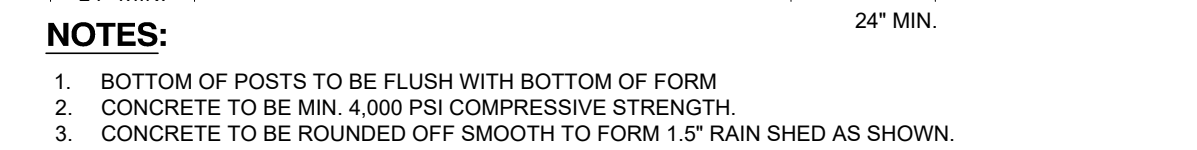


The logo for Willingham Engineering. It features a stylized compass rose on the left with the letters "we" inside. To the right of the compass rose, the word "willingham" is written in a large, lowercase, sans-serif font, and the word "engineering" is written in a smaller, lowercase, sans-serif font directly below it.

2	09/05/24	REVISIONS PER PLANNING BOARD	
1	02/23/24	REVISIONS PER PLANNING BOARD	
REV	DATE	DESCRIPTION	

DRAWN BY	CHECKED BY
MLT	
DATE	SCALE
09/22/23	1"=40'
PROJECT NO.	
23006	
SHEET NO.	
SP-4	

FABRIC HEIGHT	LINE POST O.D.	END/CORNER POST O.D.	TOP RAIL & BRACE RAIL
3' TO 5'		2"	1 5/8"
6' TO 8'	2 1/2"	3"	1 5/8"
10' TO 12'		4"	2"



SCALE: N.T.S.









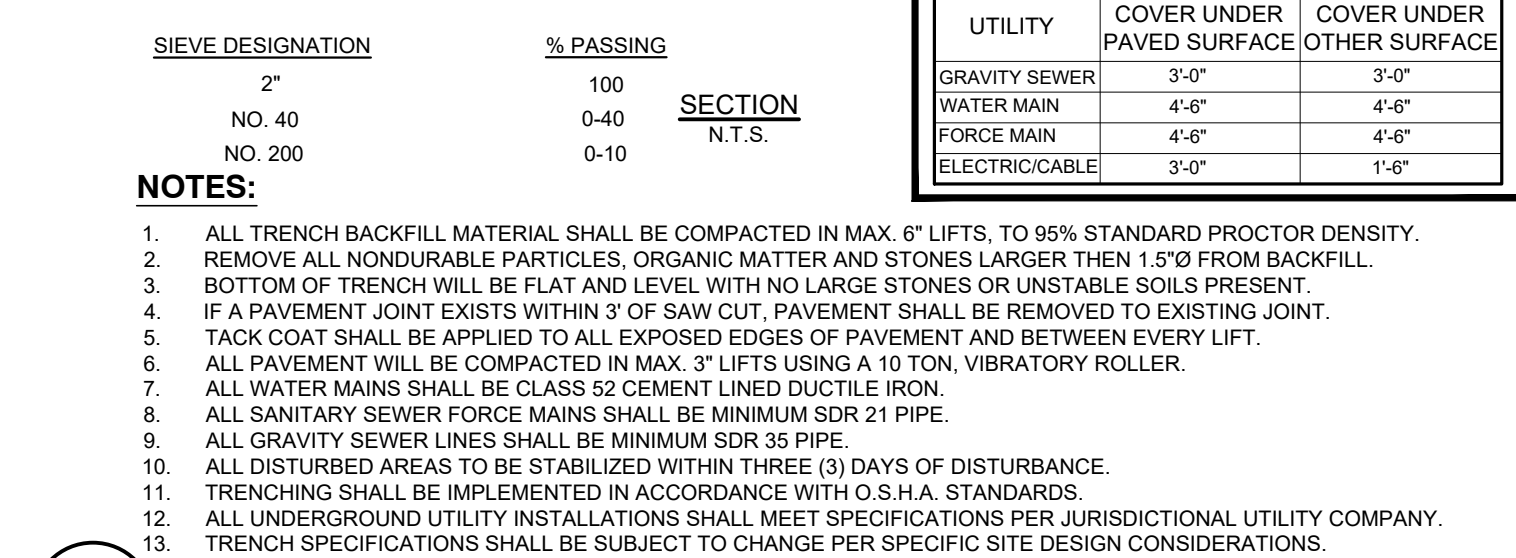
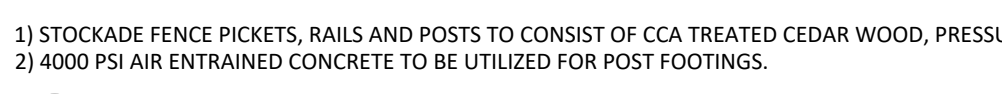
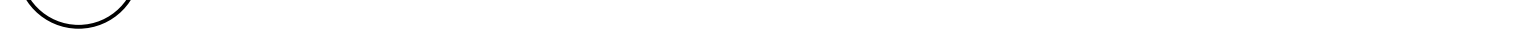
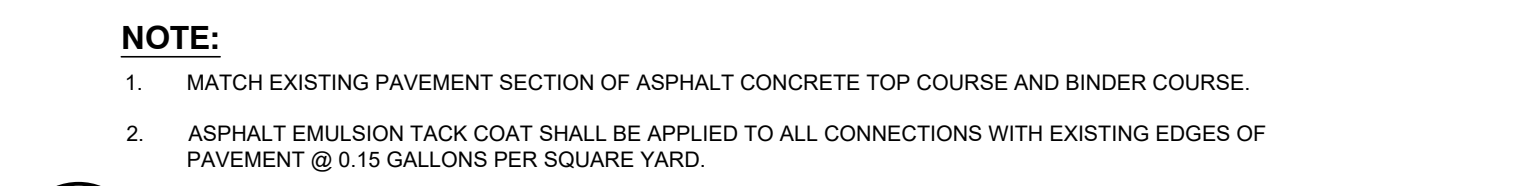


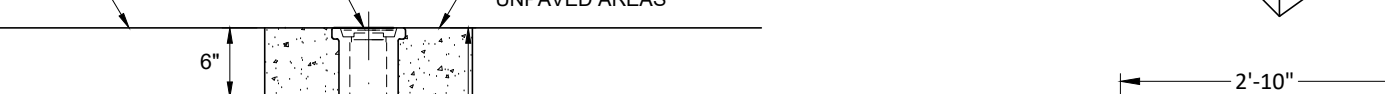
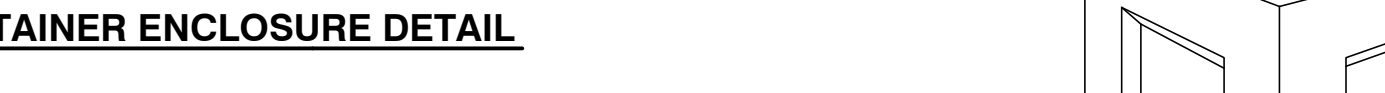
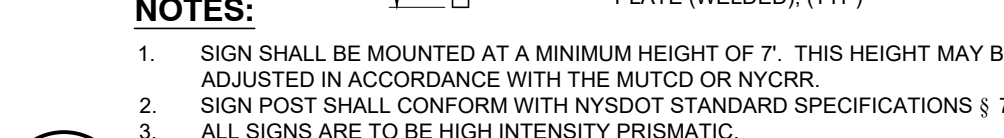
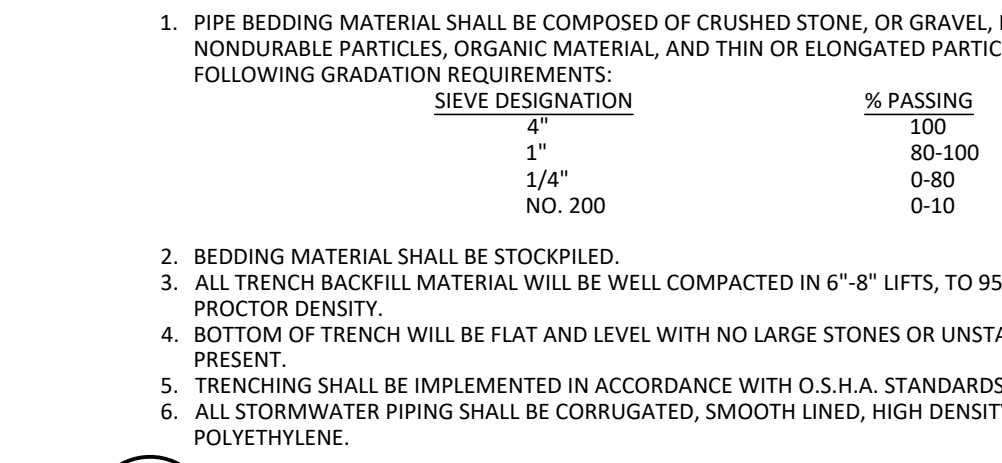
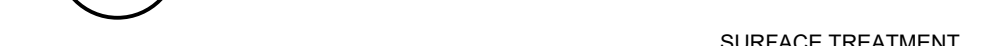
Diagram illustrating two methods for tapping a main water pipe:

- Left Method:** A corporation stop with a compression outlet is connected to a copper service pipe. The copper service pipe is labeled "COPPER SERVICE PIPE UP TO MAX DIRECT TAP SIZE (SEE TABLE)".
- Right Method:** A bronze service saddle (Smith-Blair #323 or equal) is connected to a corporation stop with a compression outlet. The corporation stop is labeled "CORPORATION STOP WITH COMPRESSION OUTLET". The copper service pipe is labeled "COPPER SERVICE PIPE".

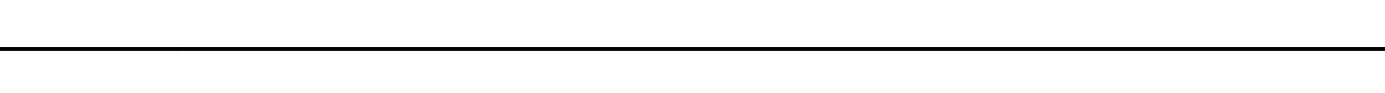
8 TYPICAL COPPER WATER SERVICE TAPS



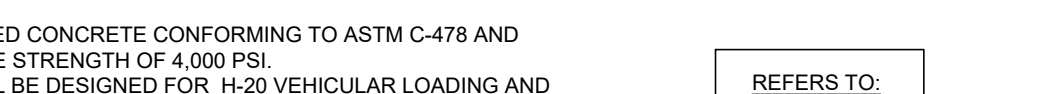
WATER MAIN / SANITARY / STORM SEWER



### T TAP SLEEVE AND VALVE DETAIL



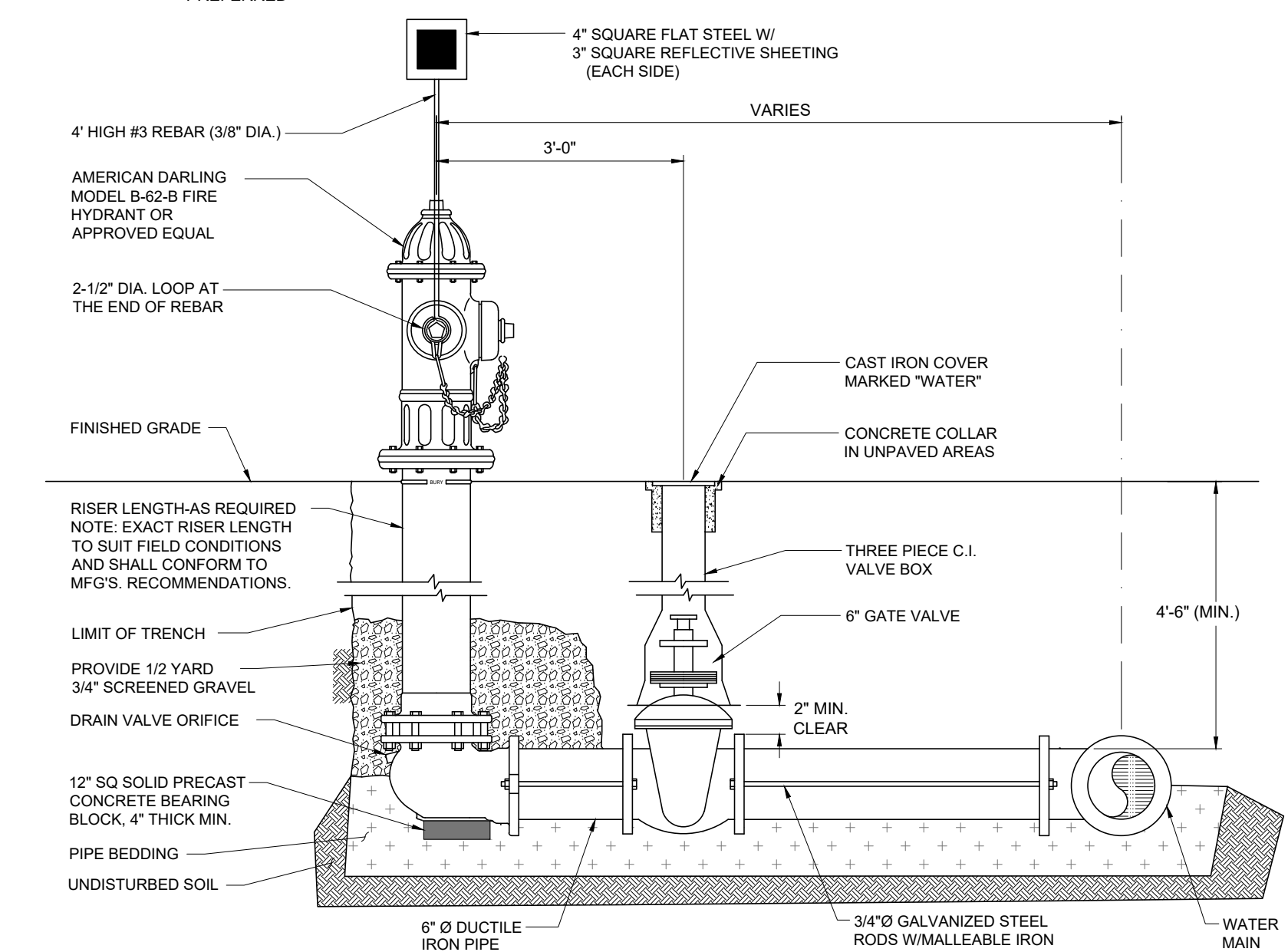
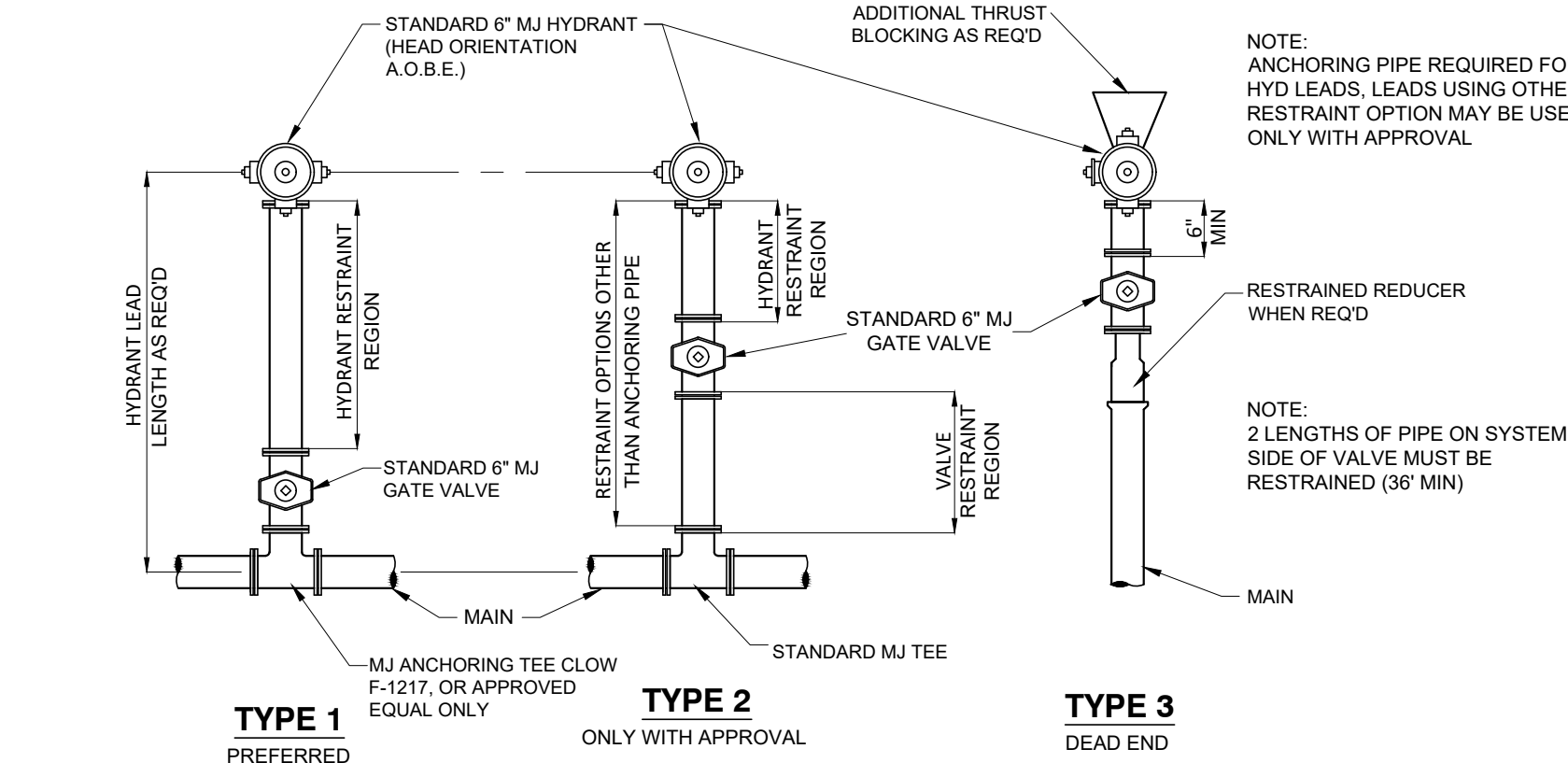
5 DOMESTIC WATER SERVICE W/ CURB BOX



SITE DETAILS
SUMMIT DRIVE PROPERTIES LLC
SUMMIT DRIVE
TOWN OF MARLBOROUGH, ULSTER COUNTY, NEW YORK

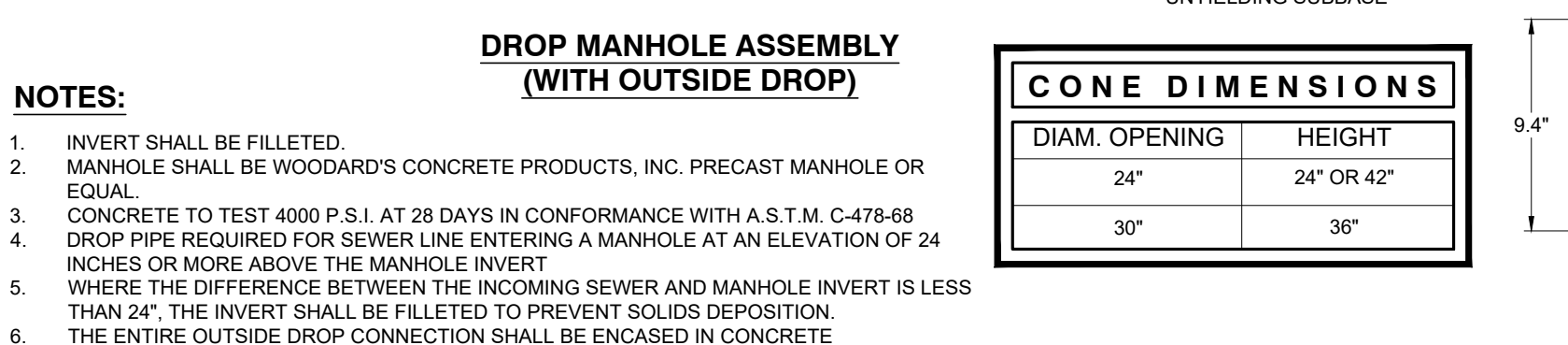
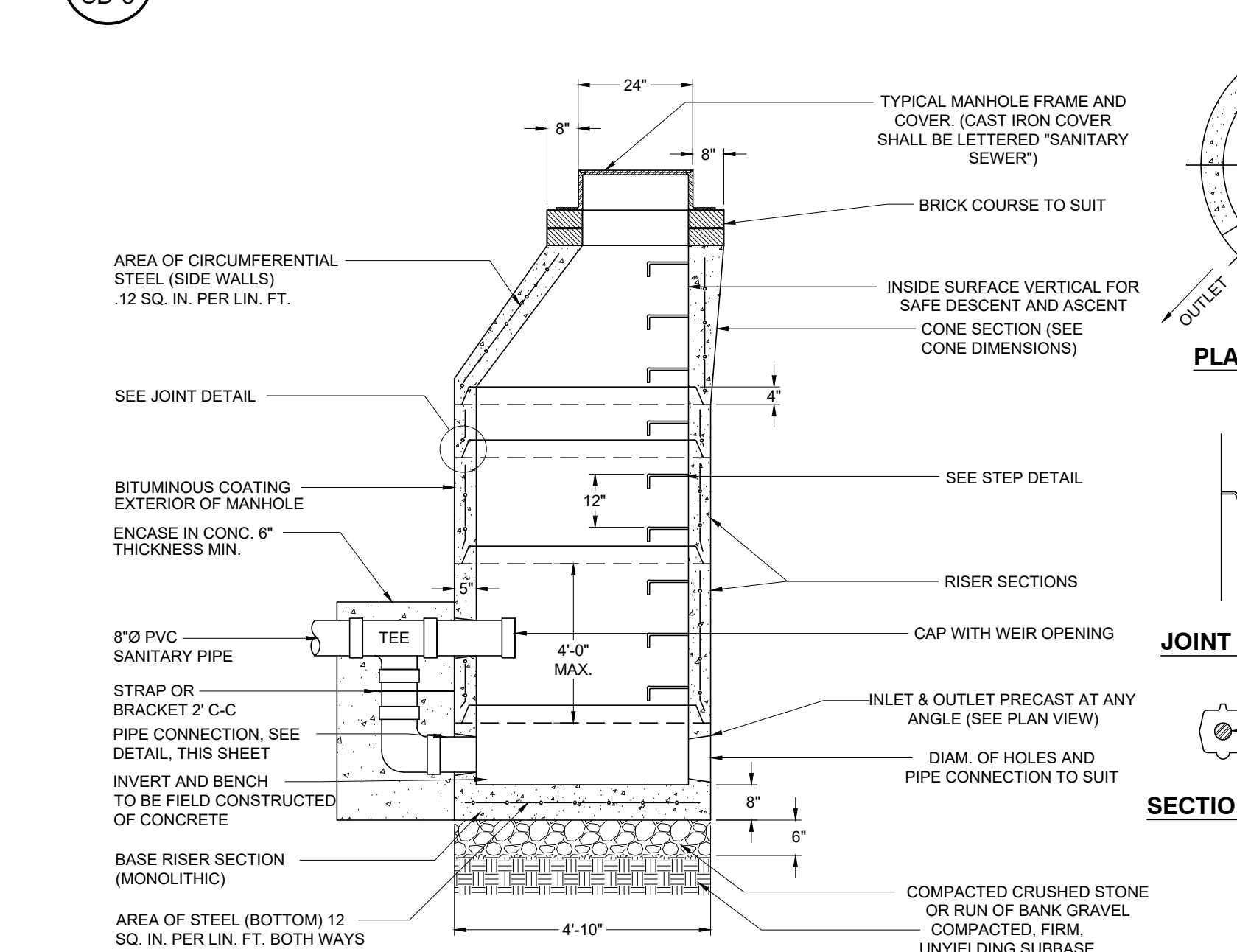
DRAWN BY	CHECKED BY
MLT	
DATE	SCALE
09/22/23	AS NOTED
PROJECT NO.	
23006	
SHEET NO.	
SD-2	





**1**  
SD-3  
SCALE: N.T.S.

**HYDRANT ASSEMBLY DETAIL**



**5**  
SD-3  
SCALE: N.T.S.

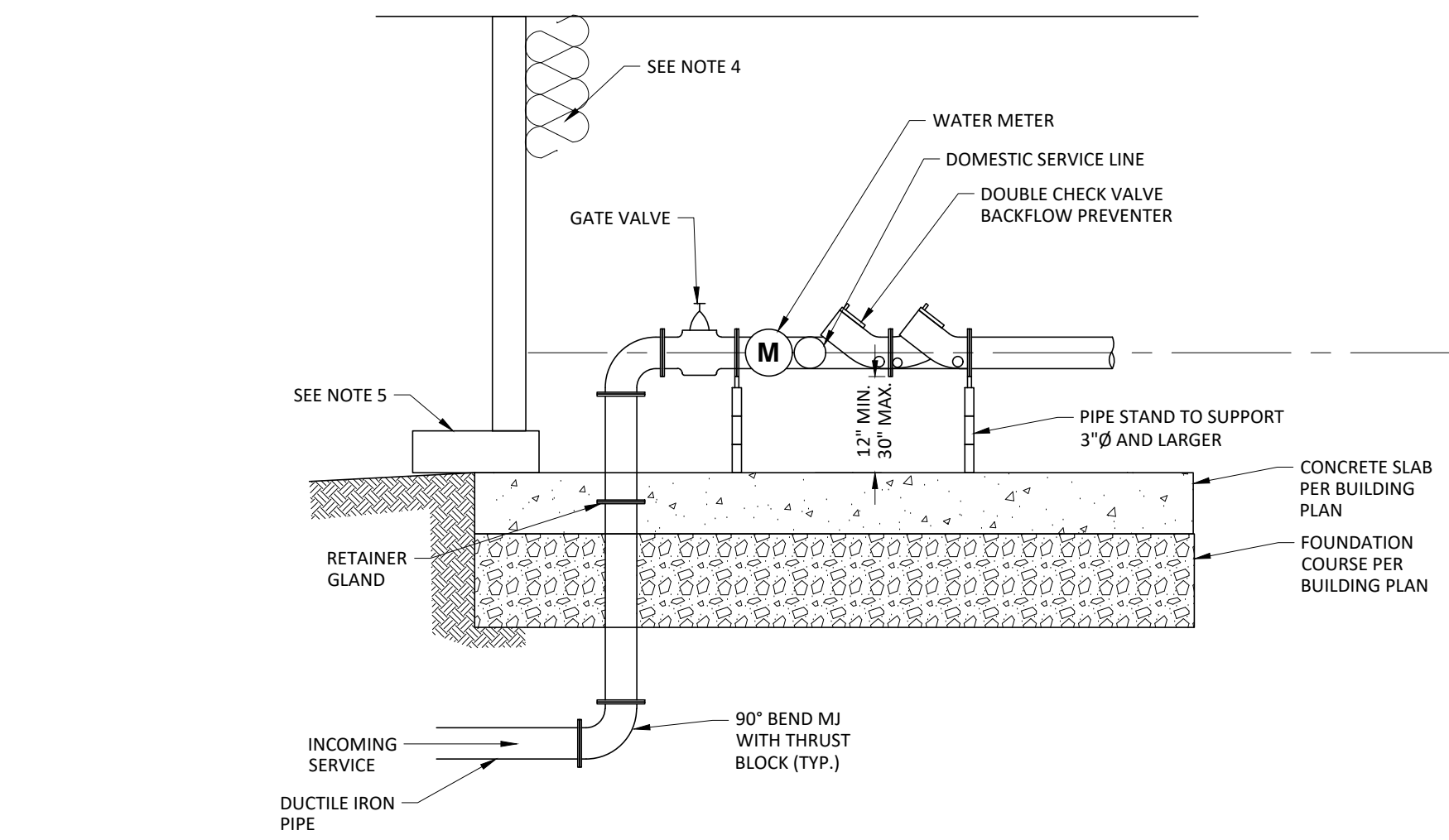
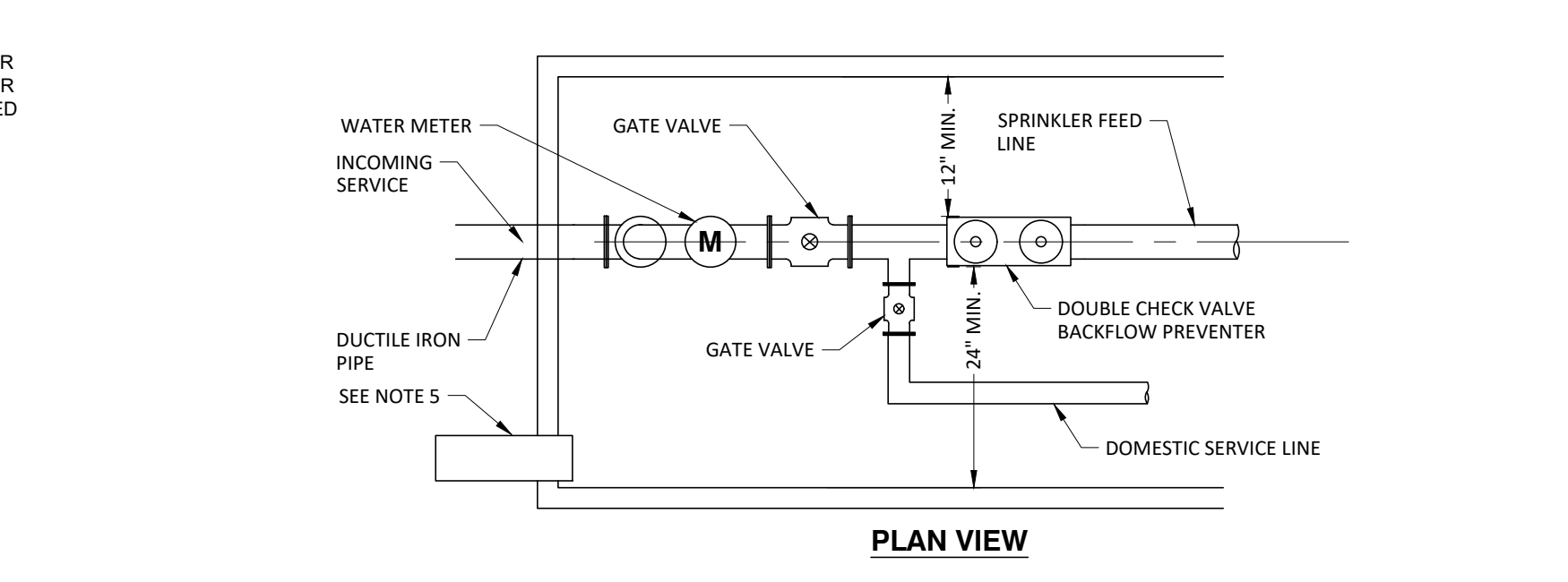
**TYPICAL SANITARY MANHOLE DETAILS**

ORIGINAL SIZE IN INCHES

ALL RIGHTS RESERVED. COPY OR REPRODUCTION OF THIS PLAN OR ANY PORTION THEREOF, IS PROHIBITED WITHOUT THE WRITTEN PERMISSION OF THE DESIGN ENGINEER, SURVEYOR, OR ARCHITECT.

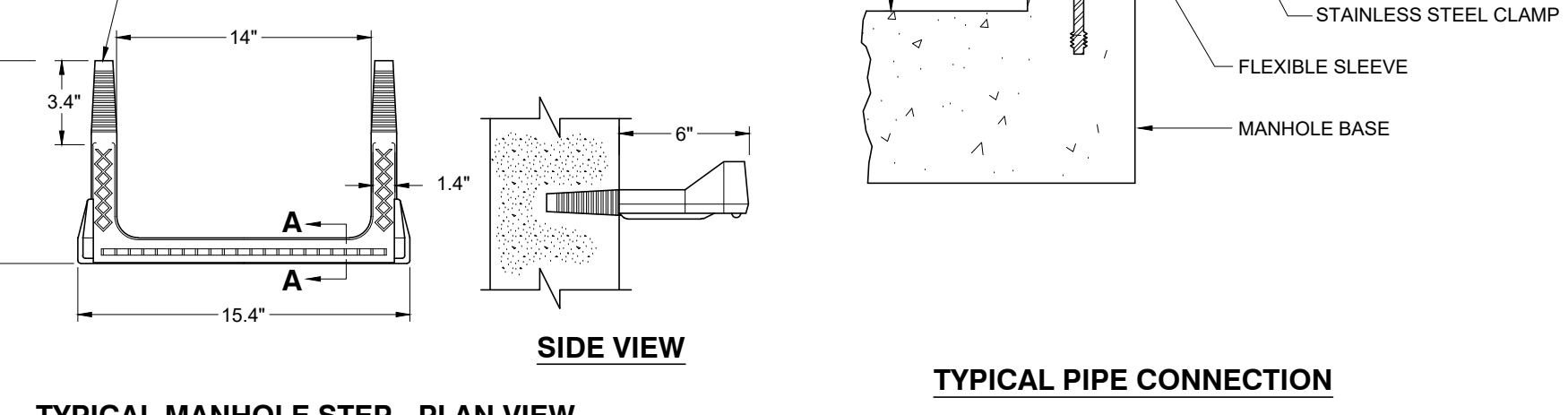
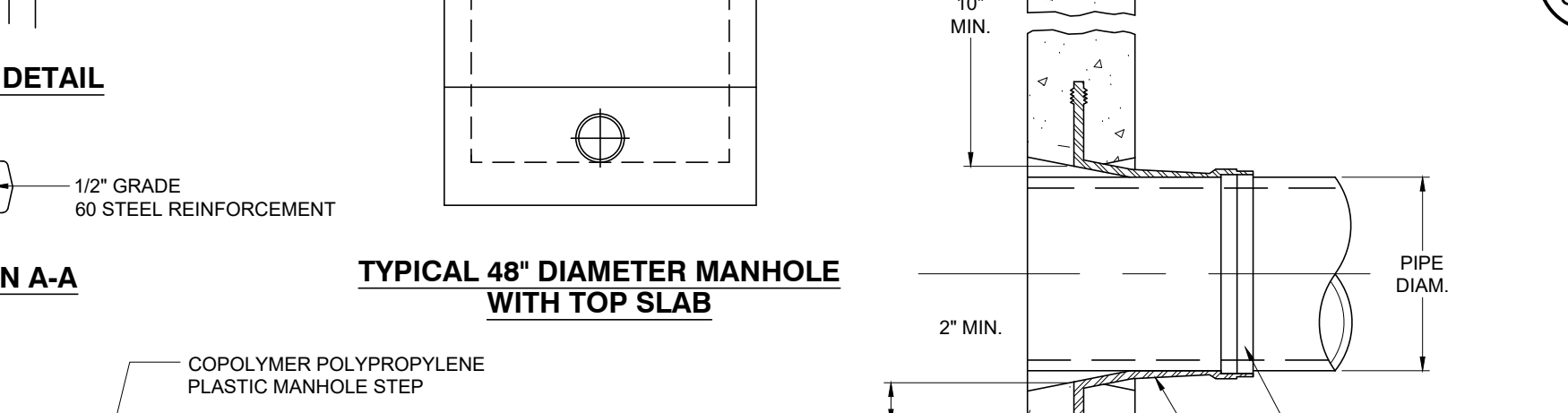
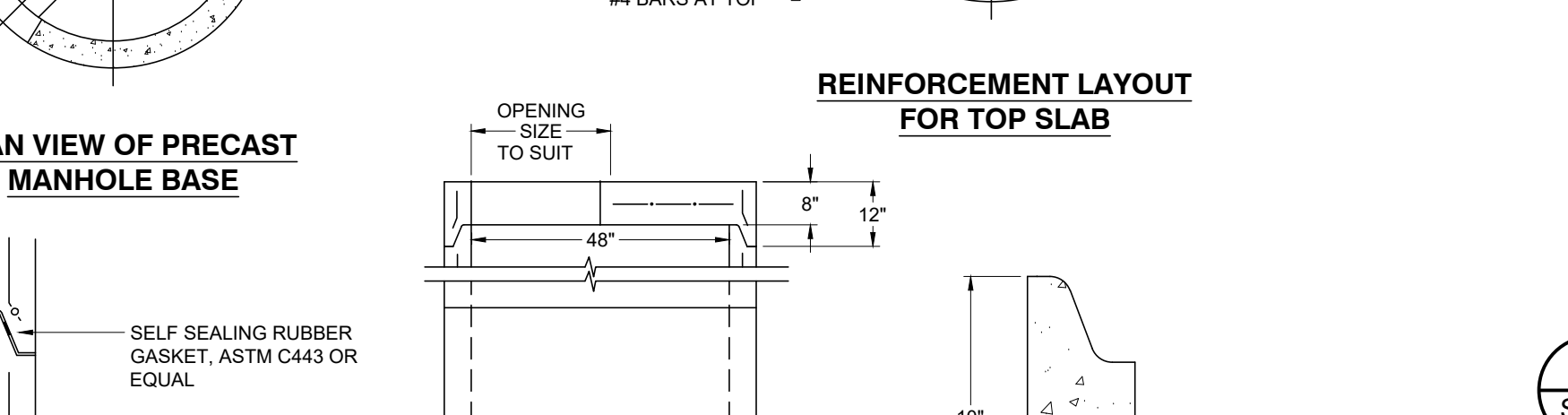
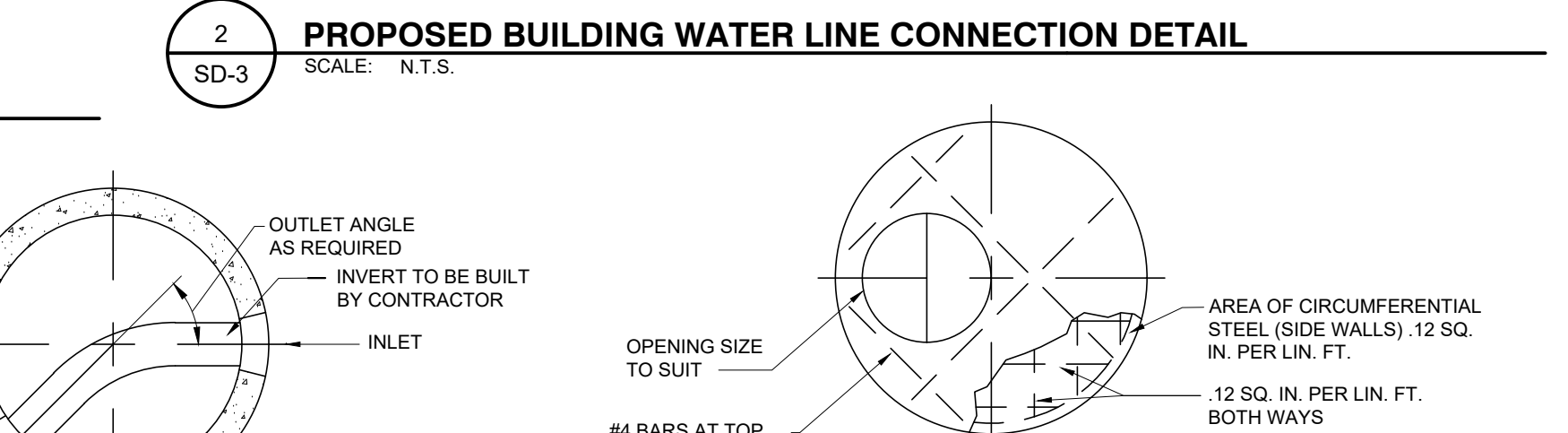
UNDER ARTICLE 145 (ENGINEERING), SECTION 2209 (2) OF THE NEW YORK STATE EDUCATION LAW, IT IS UNLAWFUL FOR ANY PERSON TO ALTER ANY ITEM ON THIS DRAWING, UNLESS ACTING UNDER THE DIRECTION OF A LICENSED PROFESSIONAL ENGINEER OR LICENSED SURVEYOR. IF ANY ITEM IS ALTERED, THE ALTERING ENGINEER AND/OR SURVEYOR SHALL AFFIX TO THE ITEM HIS SEAL AND THE NOTATION "ALTERED BY" FOLLOWED BY HIS SIGNATURE AND THE DATE OF SUCH ALTERATION, AND A SPECIFIC DESCRIPTION OF THE ALTERATION.

183 Main Street  
New Paltz, New York 12561  
T 845.255.0210 F 845.256.8110  
www.willinghamengineering.com



**2**  
SD-3  
SCALE: N.T.S.

**PROPOSED BUILDING WATER LINE CONNECTION DETAIL**



**3**  
SD-3  
SCALE: N.T.S.

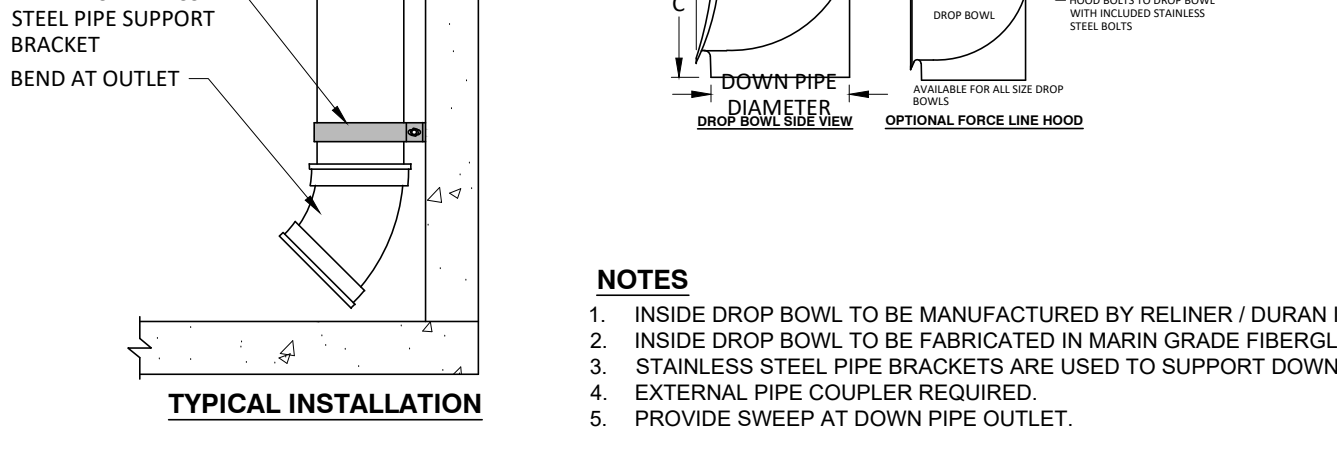
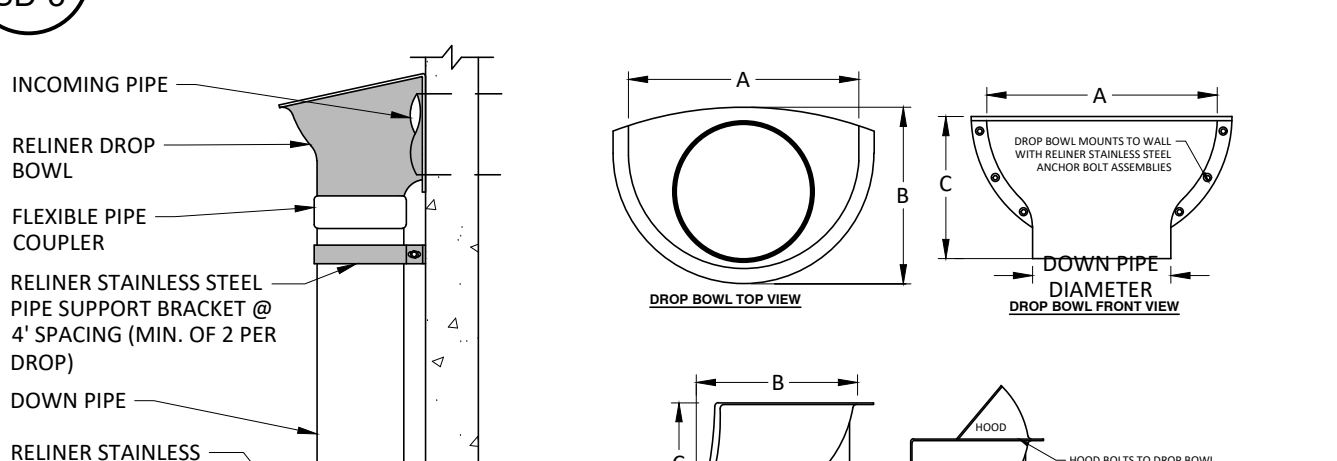
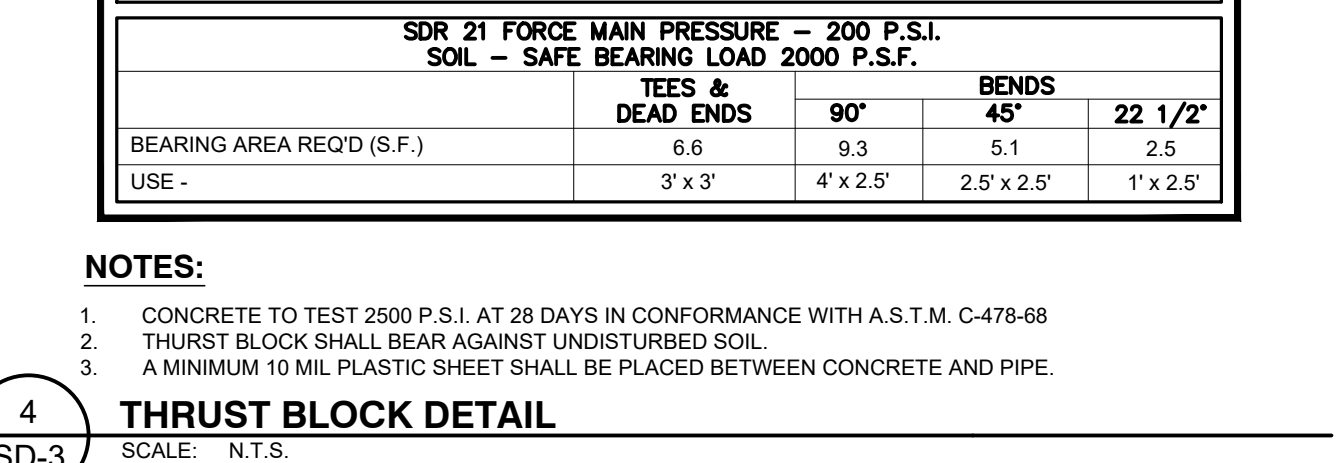
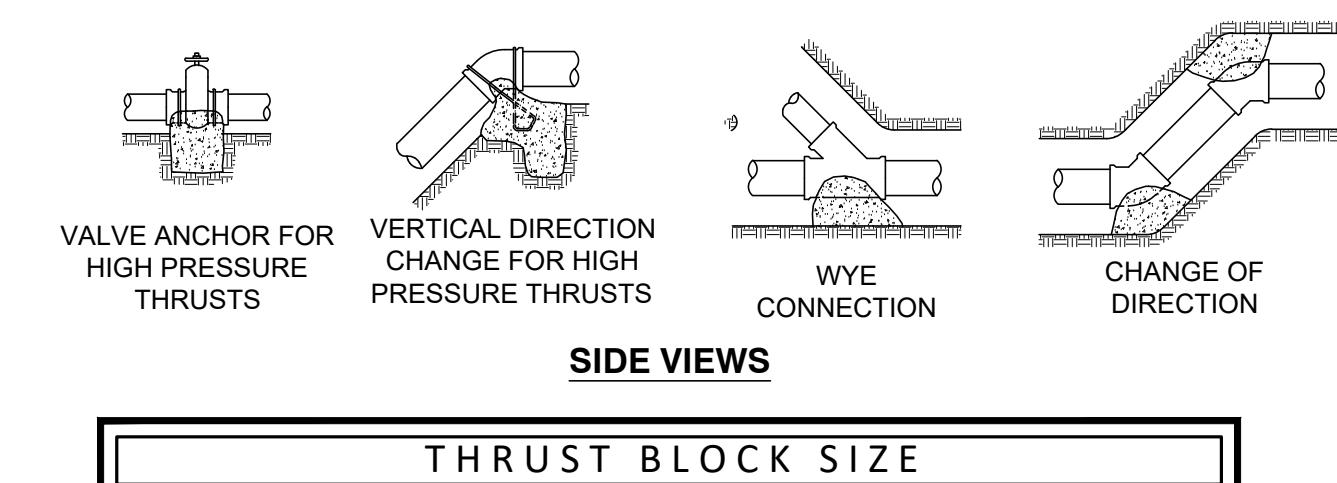
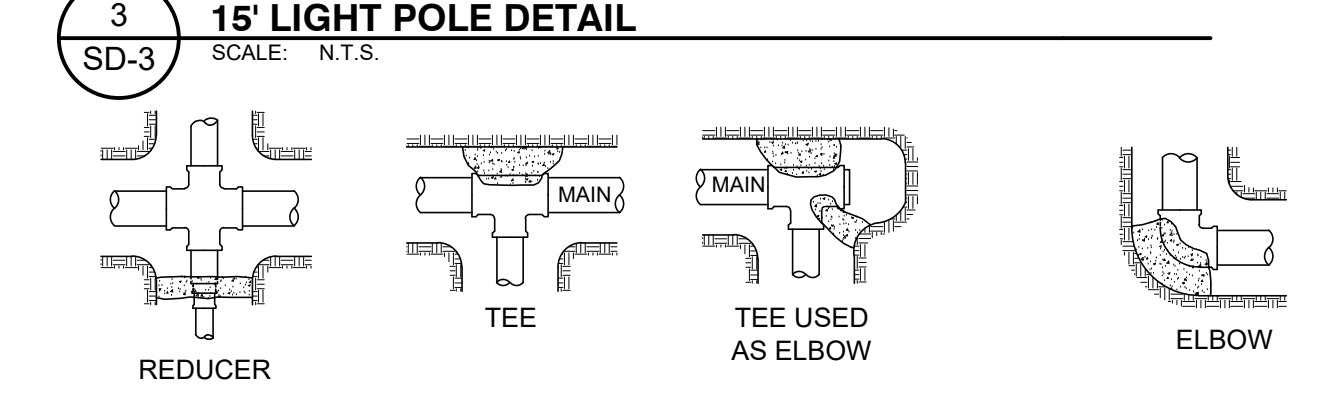
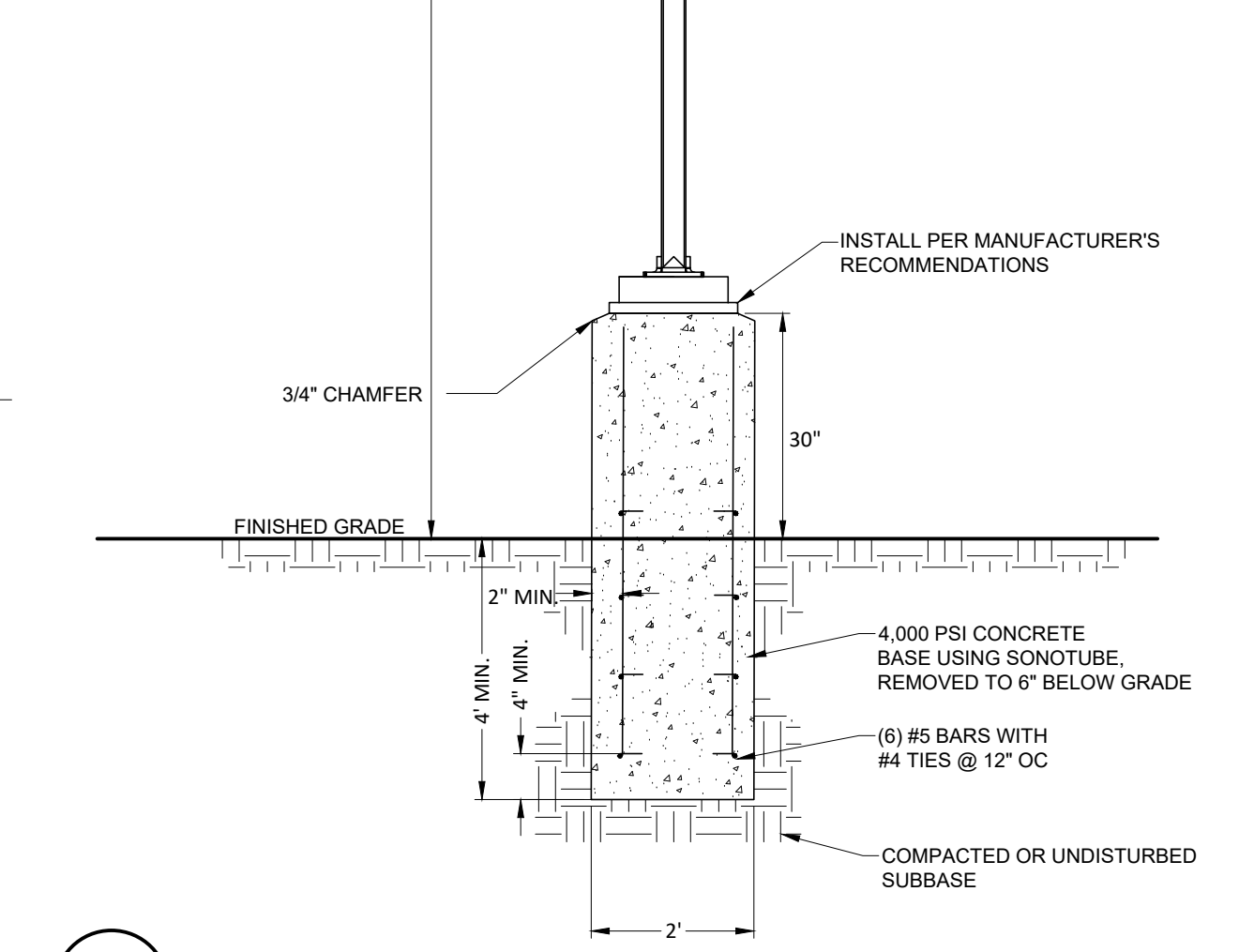
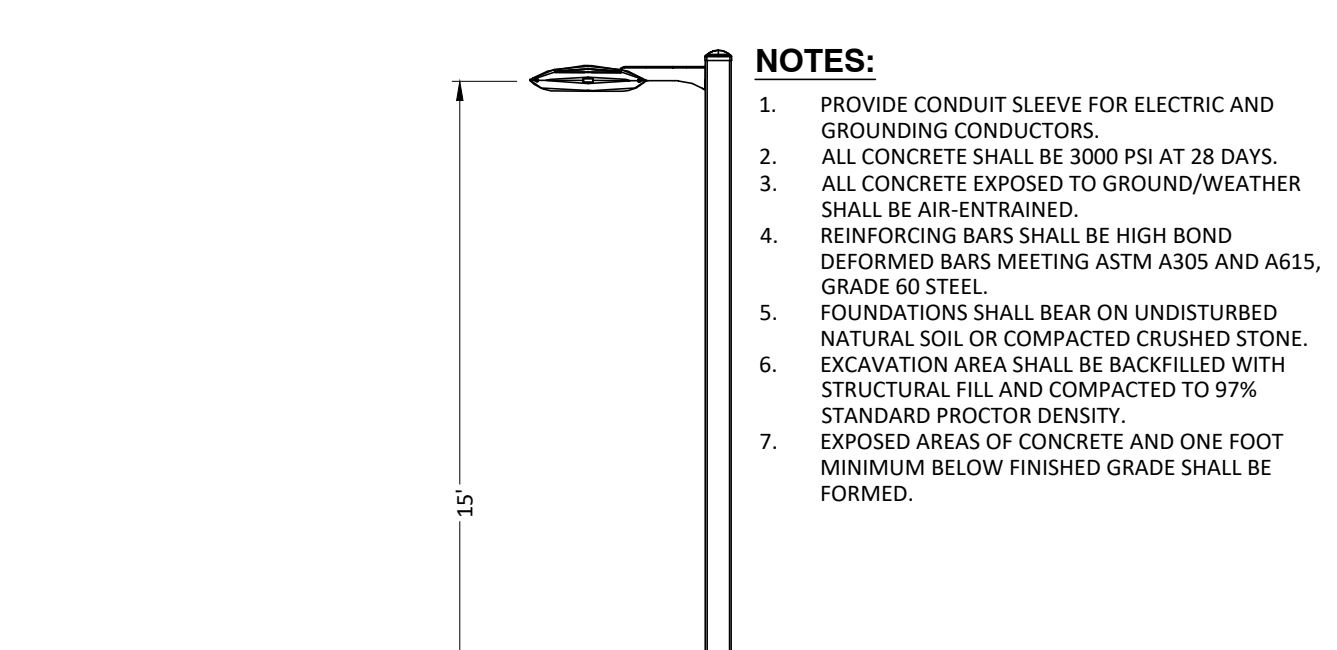
**REINFORCEMENT LAYOUT FOR TOP SLAB**

ORIGINAL SIZE IN INCHES

ALL RIGHTS RESERVED. COPY OR REPRODUCTION OF THIS PLAN OR ANY PORTION THEREOF, IS PROHIBITED WITHOUT THE WRITTEN PERMISSION OF THE DESIGN ENGINEER, SURVEYOR, OR ARCHITECT.

UNDER ARTICLE 145 (ENGINEERING), SECTION 2209 (2) OF THE NEW YORK STATE EDUCATION LAW, IT IS UNLAWFUL FOR ANY PERSON TO ALTER ANY ITEM ON THIS DRAWING, UNLESS ACTING UNDER THE DIRECTION OF A LICENSED PROFESSIONAL ENGINEER OR LICENSED SURVEYOR. IF ANY ITEM IS ALTERED, THE ALTERING ENGINEER AND/OR SURVEYOR SHALL AFFIX TO THE ITEM HIS SEAL AND THE NOTATION "ALTERED BY" FOLLOWED BY HIS SIGNATURE AND THE DATE OF SUCH ALTERATION, AND A SPECIFIC DESCRIPTION OF THE ALTERATION.

183 Main Street  
New Paltz, New York 12561  
T 845.255.0210 F 845.256.8110  
www.willinghamengineering.com



**6**  
SD-3  
SCALE: N.T.S.

**SANITARY MANHOLE INSIDE DROP BOWL**

ORIGINAL SIZE IN INCHES

ALL RIGHTS RESERVED. COPY OR REPRODUCTION OF THIS PLAN OR ANY PORTION THEREOF, IS PROHIBITED WITHOUT THE WRITTEN PERMISSION OF THE DESIGN ENGINEER, SURVEYOR, OR ARCHITECT.

UNDER ARTICLE 145 (ENGINEERING), SECTION 2209 (2) OF THE NEW YORK STATE EDUCATION LAW, IT IS UNLAWFUL FOR ANY PERSON TO ALTER ANY ITEM ON THIS DRAWING, UNLESS ACTING UNDER THE DIRECTION OF A LICENSED PROFESSIONAL ENGINEER OR LICENSED SURVEYOR. IF ANY ITEM IS ALTERED, THE ALTERING ENGINEER AND/OR SURVEYOR SHALL AFFIX TO THE ITEM HIS SEAL AND THE NOTATION "ALTERED BY" FOLLOWED BY HIS SIGNATURE AND THE DATE OF SUCH ALTERATION, AND A SPECIFIC DESCRIPTION OF THE ALTERATION.

183 Main Street  
New Paltz, New York 12561  
T 845.255.0210 F 845.256.8110  
www.willinghamengineering.com

### DISINFECTION WATER SYSTEM NOTES

- ALL PIPE, FITTINGS AND ACCESSORIES SHALL BE INSTALLED AND TESTED IN ACCORDANCE WITH THE LATEST REVISION OF ANSI/AWWA C600. NEWLY INSTALLED DUCTILE IRON WATER MAINS SHALL BE DISINFECTED IN ACCORDANCE WITH THE LATEST REVISION OF ANSI/AWWA C651 PRIOR TO PLACING IN SERVICE, AS DIRECTED BY THE TOWN OF LLOYD WATER DEPARTMENT.

**DISINFECTION OF POTABLE WATER SERVICES MAINS**

- DISINFECTION WILL BE ACCOMPLISHED AFTER PIPE HAS PASSED ANY LEAKAGE TESTS.
- THE MUNICIPALITY AND THE ENGINEER SHALL BE NOTIFIED AT LEAST 48 HOURS PRIOR TO THE START OF PRESSURE TESTING, LEAKAGE TESTING AND DISINFECTION.
- DISINFECTION WILL BE PERFORMED IN ACCORDANCE WITH AWWA STANDARD C 651-05 OR LATER ADDITION. (EXCLUDING SECTION 5.1 COVERING THE TABLET METHOD).
- CHLORINE-WATER SOLUTION IS PREPARED BY ADDING SODIUM HYPOCHLORITE TO WATER IN ACCORDANCE WITH THE FOLLOWING TABLE (VERIFY AGAINST TOWN REQUIREMENTS): CHLORINE REQUIRED TO PRODUCE 25 MG/L CONCENTRATION IN 100 FT. OF PIPE BY DIAMETER

PIPE SIZE INCHES	100 PERCENT CHLORINE POUNDS	1 PERCENT CHLORINE SOLUTIONS GALLONS
4	0.013	0.16
6	0.030	0.36
8	0.054	0.65
10	0.085	1.02

- PRODUCT DETERIORATION MUST BE CONSIDERED IN COMPUTING THE QUANTITY OF SODIUM HYPOCHLORITE REQUIRED FOR THE DESIRED CONCENTRATION.
- CHLORINE-WATER SOLUTION SHALL BE INTRODUCED INTO THE WATER MAIN WITH A GASOLINE OR ELECTRICALLY POWERED CHEMICAL FEED PUMP DESIGNED FOR FEEDING CHLORINE SOLUTIONS. FEED LINES SHALL BE OF SUCH MATERIAL AND STRENGTH TO PERMIT THEM TO WITHSTAND SAFELY THE MAXIMUM PRESSURE THAT MAY BE CREATED BY PUMP. ALL CONNECTIONS SHALL BE CHECKED FOR TIGHTNESS BEFORE HYPOCHLORITE SOLUTION IS APPLIED TO MAIN.
- THE CONTRACTOR SHALL FURNISH AND INSTALL A CORPORATION STOP JUST DOWNSTREAM FROM THE NEWLY INSTALLED GATE VALVE.
- GENERALLY, THE FOLLOWING PROCEDURE SHALL BE USED TO DISINFECT THE NEW MAIN. THE CONTRACTOR SHALL, HOWEVER, REVIEW THEIR PROPOSED PROCEDURES WITH THE ENGINEER AT LEAST 48 HOURS PRIOR TO START OF DISINFECTION. ALL DISINFECTION PROCEDURES MUST BE APPROVED BY THE ENGINEER BEFORE DISINFECTION STARTS.
- ALL GATE VALVES AND HYDRANTS MUST BE CLOSED. THE NEW MAIN SHOULD ALREADY BE FULL OF WATER FROM THE HYDROSTATIC TESTS. IF NOT, IT SHALL BE FILLED.
- MIX CHLORINE-WATER SOLUTION IN 55 GALLON DRUMS; CONNECT FEED LINE TO PUMP AND NEW MAIN.
- OPEN GATE VALVE ON THE HYDRANT LEAD OF END HYDRANT; THEN OPEN HYDRANT FULLY. (NOTE: HYDRANT MUST ALWAYS BE EITHER FULLY OPENED OR FULLY CLOSED. THE HYDRANT FLOW MAY BE CONTROLLED BY THROTTLING THE GATE VALVE ON THE HYDRANT LEAD).
- START PUMPING CHLORINE-WATER SOLUTION INTO WATER MAIN; THEN OPEN UPSTREAM GATE VALVE SLOWLY UNTIL FLOW FROM HYDRANT IS PROPORTIONATE TO THE AMOUNT OF CHLORINE-WATER SOLUTION BEING PUMPED (30 PARTS WATER TO 1 PART CHLORINE-WATER SOLUTION). IF A WATER METER IS NOT AVAILABLE, DISCHARGE RATE MAY BE DETERMINED BY USING EITHER A PITOT GAUGE IN THE DISCHARGE OR BY MEASURING THE TIME TO FILL A CONTAINER OF KNOWN VOLUME (SUCH AS A 55 GALLON BARREL). THE PUMPING RATE CAN BE DETERMINED BY MEASURING THE DROP IN LIQUID LEVEL IN A GIVEN LENGTH OF TIME.
- AFTER HYDRANT FLOW AND PUMPING RATE HAVE BEEN ADJUSTED, MAINTAIN A CONSTANT FLOW SO THAT CHLORINE CONCENTRATION IN THE MAIN IS MAINTAINED AT A MINIMUM OF 25 PPM.
- PERIODICALLY CHECK HYDRANT DISCHARGE FOR CHLORINE CONCENTRATION BY USING A FIELD CHLORINE RESIDUAL TEST KIT. MAINTAIN HYDRANT DISCHARGE AND PUMPING RATE UNTIL THE MINIMUM CHLORINE CONCENTRATION OF 25 PPM HAS BEEN ACHIEVED THROUGHOUT THE ENTIRE MAIN DISINFECTED.
- AFTER THE REQUIRED CONCENTRATION HAS BEEN ACHIEVED, ALL VALVES AND HYDRANTS ON THE MAIN LINE BETWEEN THE UPSTREAM GATE VALVE AND THE DISCHARGE HYDRANT SHALL BE OPERATED IN ORDER TO DISINFECT THE INTERNAL APPURTENANCES. DO NOT OPERATE ANY GATE VALVE THAT IS LOCATED ON A CONNECTION TO AN EXISTING WATER MAIN THAT IS IN SERVICE.
- AFTER THE ENGINEER HAS TAKEN A WATER SAMPLE AND VERIFIED THE MINIMUM 25 PPM CHLORINE CONCENTRATION, THE CONTRACTOR SHALL RETAIN THE CHLORINATED WATER IN THE MAIN BY THE FOLLOWING METHOD:
  - FIRST, CLOSE THE UPSTREAM GATE VALVE.
  - SECOND, CLOSE THE DISCHARGE HYDRANT.
  - THIRD, SHUT OFF THE PUMP.
- CHLORINATED WATER SHALL REMAIN IN THE MAIN FOR A MINIMUM OF 24 HOURS.
- IF THE CHLORINE RESIDUAL IS LESS THAN 10 PPM AT THE END OF THE 24 HOURS, REPEAT SYSTEM TREATMENT.
- ANY SECTION OF PIPE, VALVES OR FITTINGS, INCLUDING TAPPING SLEEVES AND VALVES WHICH ARE INSTALLED OUTSIDE THE LIMITS OF THE SYSTEM SUBJECTED TO THE CHLORINATION PROCEDURES SPECIFIED ABOVE, SHALL BE SPRAYED OR SWABBED WITH A 1% HYPOCHLORITE SOLUTION PRIOR TO INSTALLATION.
- AFTER THE ENGINEER HAS TAKEN A WATER SAMPLE AND VERIFIED THE MINIMUM 10 PPM CHLORINE RESIDUAL, CONTRACTOR SHALL THOROUGHLY FLUSH CHLORINATED WATER FROM THE MAIN BY THE FOLLOWING METHOD:
  - FIRST, OPEN THE DISCHARGE HYDRANT.
  - SECOND, OPEN THE UPSTREAM GATE VALVE.
  - THIRD, OPEN ANY HYDRANTS ON THE MAIN LINE TO REMOVE ALL CHLORINATED WATER FROM THE HYDRANT LEADS.
- FLUSH THE MAIN WITH POTABLE WATER IN SUCH A MANNER THAT DOES NOT ADVERSELY AFFECT FISH, PLANT, OR ANIMAL LIFE.
- THE QUANTITY AND LOCATION OF WATER SAMPLES TO BE TAKEN SHALL BE DETERMINED BY THE ENGINEER.
- WATER SAMPLES SHALL BE TAKEN BY THE CONTRACTOR IN STERILIZED BOTTLES.
- ANALYZE WATER SAMPLES IN ACCORDANCE WITH STANDARD METHODS FOR EXAMINATION OF WATER AND WASTEWATER, LATEST EDITION, PUBLISHED BY AMERICAN WATER WORKS ASSOCIATION.
- IF A BACTERIOLOGICAL TEST PROVES THE WATER QUALITY TO BE UNACCEPTABLE; REPEAT SYSTEM TREATMENT.
- IF A BACTERIOLOGICAL TEST PROVES THE WATER QUALITY TO BE UNACCEPTABLE; REMOVE FEED LINE AND CORPORATION STOP. CORPORATION STOP WILL BE REPLACED WITH A THREADED BRASS PLUG UNLESS OTHERWISE DIRECTED BY ENGINEER.
- SAMPLES MUST BE BACTERIOLOGICALLY SAFE BEFORE WATER MAIN IS PLACED IN SERVICE.

### TESTING WATER SYSTEM NOTES

- ALL PIPE, FITTINGS AND ACCESSORIES SHALL BE INSTALLED AND TESTED IN ACCORDANCE WITH THE LATEST REVISION OF ANSI/AWWA C600.

**TESTING WATER MAINS**

- AFTER TRENCH HAS BEEN BACKFILLED, HYDROSTATIC ACCEPTANCE TESTS, CONSISTING OF A PRESSURE TEST AND A LEAKAGE TEST SHALL BE PERFORMED ON ALL SECTIONS OF WATER MAINS INSTALLED. LEAKAGE TEST SHALL BE CONDUCTED CONCURRENTLY WITH PRESSURE TEST. TEST SECTION SHALL BE LIMITED TO ABOUT 2000 FT. (MAX.) UNLESS OTHERWISE APPROVED BY THE ENGINEER.
- AFTER ALL TESTS AND INSPECTIONS HAVE BEEN PERFORMED, EVIDENCE OF COMPLIANCE SHALL BE FORWARDED TO OWNER/ENGINEER AND THE MUNICIPALITY PRIOR TO ACCEPTANCE.
- ALL WATER FOR TESTS SHALL BE FURNISHED AND DISPOSED OF BY THE CONTRACTOR AT THE CONTRACTOR'S EXPENSE. SOURCE AND/OR QUALITY OF WATER WHICH THE CONTRACTOR PROPOSED TO USE IN TESTING LINES SHALL BE ACCEPTABLE TO THE ENGINEER.
- HYDROSTATIC PRESUMPTIVE TESTS MAY BE PERFORMED WHEN SYSTEM IS PARTIALLY BACKFILLED TO SIMPLY CHECK WORK, BUT ACCEPTANCE OF SYSTEM SHALL BE BASED ON HYDROSTATIC TESTS RUN ON FINISHED SYSTEM AFTER IT HAS BEEN COMPLETELY BACKFILLED. ALL HYDROSTATIC TESTS SHALL BE PERFORMED IN ACCORDANCE WITH SECTION 4 OF AWWA STANDARD C 600 OR LATER ADDITION, AS MODIFIED HEREIN.
- FOR THE PRESSURE TEST, SYSTEM SHALL BE PRESSURIZED AND MAINTAINED AT A MINIMUM OF 150 P.S.I. OR 1.5 TIMES THE WORKING PRESSURE, WHICHEVER IS GREATER, BASED ON THE ELEVATION OF THE LOWEST POINT IN THE SECTION BEING TESTED AND CORRECTED TO THE ELEVATION OF THE GAUGE. PROVISIONS SHALL BE MADE TO RELIEVE AIR TRAPPED AT HIGH POINTS IN THE SYSTEM THROUGH ADJACENT HYDRANTS OR THROUGH TAPS AND CORPORATION STOPS INSTALLED FOR THE PURPOSE OF THE CONTRACTOR. AFTER SAID PRESSURE HAS BEEN MAINTAINED SUCCESSFULLY, WITH FURTHER PUMPING AS REQUIRED, FOR A PERIOD OF AT LEAST TWO HOURS, THE SECTION UNDER TEST SHALL BE CONSIDERED TO HAVE PASSED THE PRESSURE TEST.
- LEAKAGE TEST SHALL BE PERFORMED CONCURRENTLY USING A MINIMUM TEST PRESSURE OF 150 P.S.I. OR 1.5 TIMES THE WORKING PRESSURE, WHICHEVER IS GREATER, BASED ON THE ELEVATION OF THE LOWEST POINT IN THE SECTION UNDER TEST AND CORRECTED TO ELEVATION OF THE GAUGE. LEAKAGE TEST DURATION SHALL BE A MINIMUM OF TWO HOURS AFTER LEAKAGE RATE HAS STABILIZED.
- MAXIMUM ALLOWABLE LEAKAGE SHALL BE AS SHOWN IN THE FOLLOWING TABLE:

ALLOWABLE LEAKAGE PER 1000 FT (305M) OF PIPELINE (GPH)							
AVG. TEST PRESSURE							
NOMINAL PIPE DIAMETER-IN.							
PSI (BAR)							
450 (31)	0.57	0.86	1.15	1.43	1.72	2.01	2.29
400 (28)	0.54	0.81	1.08	1.35	1.62	1.89	2.16
350 (24)	0.51	0.76	1.01	1.26	1.52	1.77	2.02
300 (21)	0.47	0.70	0.94	1.17	1.40	1.64	1.87
275 (19)	0.45	0.67	0.90	1.12	1.34	1.57	1.79
250 (17)	0.43	0.64	0.85	1.07	1.28	1.50	1.71
225 (16)	0.41	0.61	0.81	1.01	1.22	1.42	1.62
200 (14)	0.38	0.57	0.75	0.96	1.15	1.34	1.53
175 (12)	0.36	0.54	0.72	0.89	1.07	1.25	1.43
150 (10)	0.33	0.50	0.66	0.83	0.99	1.16	1.32
125 (9)	0.30	0.45	0.60	0.76	0.91	1.06	1.21
100 (7)	0.27	0.41	0.54	0.68	0.81	0.95	1.08

- IF LEAKAGE IN SYSTEM EXCEEDS THE SPECIFIED AMOUNT, THE CONTRACTOR SHALL, AT NO ADDED COST TO THE OWNER, LOCATE, REPAIR, AND/OR REPLACE DEFECT(S) AND RE-TEST THE PIPING SYSTEM.

### DROP BOWL SELECTION CHART

DOWN PIPE DIAMETER	PIPE	MANHOLE DIAMETER					
		4' DIA	5' DIA	6' DIA	7-8' DIA	9-12' DIA	
8"	B8FDB	B8DB	B8DB	B8DBR84	B8DBR84	B8R144	

### DROP BOWL DIMENSIONS

DOWN PIPE SERIES/DIAMETER	WIDTH "A"	DEPTH "B"	HEIGHT "C"	ANCHOR BOLT QUANTITY & TYPE	
B8	8"	18"	13.0"	11.5"	4. 1" TAMP-IN

### SITE DETAILS

SUMMIT DRIVE PROPERTIES LLC

SUMMIT DRIVE

TOWN OF MARLBOROUGH, ULSTER COUNTY, NEW YORK

REV	DATE	DESCRIPTION
2	09/05/24	REVISIONS PER PLANNING BOARD
1	02/23/24	REVISIONS PER PLANNING BOARD

DRAWN BY	CHECKED BY
MLT	
DATE	SCALE
09/22/23	AS NOTED
PROJECT NO.	
23006	
SHEET NO.	
SD-3	



